



A STATE OF
CALIFORNIA
PUBLIC AGENCY

QUAIL VALLEY WATER DISTRICT

BOARD OF DIRECTORS

Mike Biglay

Jean Grodewald

Rita Leonard Phillips

Enrique Lopez

Joan Tyer

AGENDA FOR A REGULAR MEETING OF THE BOARD OF DIRECTORS OF QUAIL VALLEY WATER DISTRICT

To be held at 24750 Sand Canyon Road, Tehachapi, CA
Saturday, January 29, 2022 at 8:30 AM.

All attendees are reminded to follow all State and Local health and safety recommendations and guidance for attending meetings.

NOTE: To comply with the Americans with Disabilities Act, to participate in any Board meeting please contact Dawnette Boatman at 661-822-1923 at least 48 hours prior to a Board meeting to inform us of your needs and to determine if accommodation is feasible.

Agenda item materials are available for public review at the District's office, 24750 Sand Canyon Road, Tehachapi. Please contact Dawnette Boatman for public review of materials.

PUBLIC COMMENT GUIDELINES: The prescribed time limit per speaker is three minutes. Please refrain from public displays or outbursts such as unsolicited applause, comments, or cheering. Any disruptive activities that substantially interfere with the ability of the District to carry out its meetings will not be permitted and offenders will be requested to leave.

Each agenda item shall be deemed to include any appropriate motion, resolution, or ordinance to take action on any item.

The public shall have an opportunity to comment on non-agenda items at the beginning of the meeting. Public shall have an opportunity to comment on each agenda item prior to any action taken.

1. Roll Call.
2. Adoption of Agenda.
3. Public comments for NON-agenda items.
4. Consent Calendar:
 - 4.1. Approve Minutes from Regular Meeting of 10/30/2021.
5. Action Items:
 - 5.1. Discussion of monthly financial statements and consideration and possible action to approve payments for October, November, December 2021. (General Manager Hardenbrook)

- 5.2. Discussion and possible action on report of Secretary declaring properties within District boundaries are at least 50% developed. (General Manager Hardenbrook)
- 5.3. Discussion and possible action approving deletion of 1 part-time service worker II, adding 1 full-time service worker II position. (General Manager Hardenbrook)
- 5.4. Discussion and possible action approving purchase of real property for future well site. (General Manager Hardenbrook)
- 5.5. Discussion and possible action adopting resolution 01-2022, a resolution honoring Service Worker II Dan Casteel upon his retirement for his years of dedicated service to the District. (General Manager Hardenbrook)
- 5.6. Discussion and possible action authorizing GM to request counsel investigate ad-valorem assessment, alternate method for levy, collection, enforcement. (General Manager Hardenbrook)
6. Reports of General Manager.
 - 6.1. General Manager's report.
 - 6.2. Update on Prop 84 project.
 - 6.3. Update on wells, reservoirs, and system status.
7. Board Members' Requests for Future Agenda Items
8. Adjournment.



A STATE OF
CALIFORNIA
PUBLIC AGENCY

QUAIL VALLEY WATER DISTRICT

BOARD OF DIRECTORS

Mike Biglay
Jean Grodewald
Rita Leonard Phillips
Enrique Lopez
Joan Tyer

MINUTES OF THE REGULAR MEETING OF THE BOARD OF DIRECTORS OF QUAIL VALLEY WATER DISTRICT Held at 24750 Sand Canyon Road, Tehachapi, CA Saturday, October 30, 2021 at 8:30 AM.

1. Roll Call.
Meeting called to order at 8:30 AM. There were present, representing a quorum:
Director Biglay;
Director Grodewald;
Director Phillips;
Director Lopez;
Absent:
Director Tyer.
2. Adoption of Agenda.
Director Grodewald moved, seconded by Director Phillips, to adopt agenda. Motion approved by unanimous assent.
3. Public comments for NON-agenda items.
Public comments were heard.
4. Consent Calendar:
 - 4.1. Approve Minutes from Regular Meeting held on 09/25/2021.
Director Grodewald moved, seconded by Director Biglay to approve consent calendar. Motion approved by unanimous assent.
5. Action Items:
 - 5.1. Discussion of monthly financial statements and consideration and possible action to approve payments for September 2021. (General Manager Hardenbrook)
General Manager Hardenbrook led a review and explanation of financial statements. Director Phillips moved, seconded by Director Biglay, to approve payments for September 2021. Motion approved by unanimous assent.
 - 5.2. Discussion and possible action approving draft 2019 audit. (General Manager Hardenbrook)

General Manager Hardenbrook led a review of 2019 audit. Director Biglay moved, seconded by Director Lopez, to approve draft 2019 audit. Motion approved by unanimous assent.

- 5.3. Discussion and possible action approving retaining Bill Walker for 2020 audit. (General Manager Hardenbrook)
Director Grodewald moved, seconded by Director Lopez, to approve retaining Bill Walker for 2020 audit. Motion approved by unanimous assent.
 - 5.4. Discussion and possible action consenting to Jim Worth of McMurtrey, Hartsock and Worth potential representation of client in land and water matters involving District. (General Manager Hardenbrook)
Director Biglay moved, seconded by Director Leonard, to advise counsel that District does not consent. Motion failed on tie vote. Director Biglay moved, seconded by Director Lopez, to table item for further discussion with counsel. Motion approved by unanimous assent.
 - 5.5. Discussion and possible action to enforce conditions of well permit issued for 28/32. (General Manager Hardenbrook)
Director Biglay motioned, seconded by Director Phillips requesting General Manager Hardenbrook direct counsel draft letter to property owners for Board review. Motion approved by unanimous assent.
 - 5.6. Discussion and possible action approving utilization of counsel to collect past due accounts. (General Manager Hardenbrook)
Director Phillips motioned, seconded by Director Grodewald requesting General Manager Hardenbrook direct counsel to provide a draft collections letter that can be sent to past due accounts. Motion approved by unanimous assent.
 - 5.7. Discussion and possible action approving requesting counsel to investigate ad-valorem assessment, alternate method for levy, collection, enforcement. (General manager Hardenbrook)
Director Biglay moved, seconded by Director Grodewald, to table item to next meeting. Motion approved by unanimous assent.
 - 5.8. Discussion and possible action to reschedule November 27, 2021 and December 25, 2021 regular meetings to avoid conflict with holidays. (General Manager Hardenbrook)
Director Phillips moved, seconded by Director Biglay, to cancel regular meetings scheduled for November and December. Motion approved by unanimous assent.
6. Reports of General Manager.
- 6.1 General Manager's report. (General Manager Hardenbrook)
General Manager Hardenbrook provided Board with a written report and brief overview of activities from September 23, 2021 through October 22, 2021.
 - 6.2 Update on Prop 84 project. (General Manager Hardenbrook)
General Manager Hardenbrook provided Board with written report and brief overview of report contents.
 - 6.3 Update on wells, reservoirs and system status. (General Manager Hardenbrook)

General Manager Hardenbrook provided Board with written report and brief overview of report contents.

7. Board Members' Requests for Future Agenda Items.
None.

8. Adjournment.
There being no further business before the Board, Director Biglay moved to adjourn at 10:28 AM. Motion approved by unanimous assent.

I attest this is a true and complete copy of the minutes of a regular meeting of the Board as read and approved by the Board of Directors of the Quail Valley Water District.

Dawnette Boatman, Secretary

Quail Valley Water District Balance Sheet

As of December 31, 2021

	Dec 31, 21
ASSETS	
Current Assets	
Checking/Savings	
131000 - Cash (Currency, coin, checks, money orders and banker's drafts on hand or on deposit with the county treasurer	
131001 - Petty Cash (Petty Cash)	
131002 - Cash-Kern County (Account held by Kern County Controller - Property tax Proceeds)	
131003 - Union Bank	3,404.00
Total 131000 - Cash (Currency, coin, checks, money orders and banker's drafts on hand or on deposit with the county tre	32,224.18
Total Checking/Savings	1,861.51
Accounts Receivable	
137000 - Accounts Receivable (This account includes the amounts due from customers for utility services, including merc	
137121 - Accounts Receivable	
137125 - Accounts Rec - Prop 84	
137126 - Accounts Rec-Conn-Fees	54,141.64
137000 - Accounts Receivable (This account includes the amounts due from customers for utility services, including merc	25,469.65
Total 137000 - Accounts Receivable (This account includes the amounts due from customers for utility services, includin	484.50
Total Accounts Receivable	1,283.37
Other Current Assets	
12100 - Inventory Asset (Costs of inventory purchased for resale)	
130000 - Undeposited Funds (Funds received, but not yet deposited to a bank account)	814.58
146000 - Inventory of Material and Suppl (This account includes the cost of all unapplied materials and supplies includ	139.11
Total Other Current Assets	20,750.58
Total Current Assets	21,703.27
Fixed Assets	
110000 - Property, Plant & Equipment	
111000 - Utility Plant In Service (This account accumulates accounts 111100-111999)	
111200 - Land (This account includes the cost of land owned by the district and including rights, interests, and privi	31,216.96
111400 - Pumping Plant (This category covers the cost of plant and equipment in connection with pumping equipment. Incl	
1114151 - Tanganda Booster Relocation (Costs accumulated for relocation of Tanganda Booster Station during 2015/16 fisc	6,252.21
1114161 - Country Cnyn Bstr Pump Replacem (Costs accumulated for Country Canyon Booster Pump replacement 2016)	1,692.83
111400 - Pumping Plant (This category covers the cost of plant and equipment in connection with pumping equipment. Incl	22,379.86
Total 111400 - Pumping Plant (This category covers the cost of plant and equipment in connection with pumping equipment	
111500 - Water Treatment Plant (This category covers all costs of plant and equipment used in connection with water tre	30,324.90
111600 - Transmission & Distribution Pla (This category covers all cost of plant and equipment used in connection with	2,975.22
111700 - General Plant (This category covers all costs of plant and equipment used for general water utility purposes.	332,545.50
1117100 - Vehicles and Equipment (VEHICLES AND EQUIPMENT)	
1117161 - Trencher (Ditch Witch 3500 Trencher)	
Total 1117100 - Vehicles and Equipment (VEHICLES AND EQUIPMENT)	3,783.24
111700 - General Plant (This category covers all costs of plant and equipment used for general water utility purposes.	3,783.24
Total 111700 - General Plant (This category covers all costs of plant and equipment used for general water utility purp	74,707.90
Total 111000 - Utility Plant In Service (This account accumulates accounts 111100-111999)	78,491.14
112000 - Construction in Progress (This category covers labor, materials, overhead amounts and interest costs incurred	
1121420 - Equestrian Main	
1121425 - Labor	350.00
1121420 - Equestrian Main - Other	-410.00
Total 1121420 - Equestrian Main	
112700 - Const In Progress-111700 (General Plant)	
1127161 - Office Building Remodel-ADA (Costs accumulated for office building repairs/remodel/ADA compliance for 2015/16	-60.00
Total 112700 - Const In Progress-111700 (General Plant)	15,761.40
1128400 - Prop 84 Construction Project (All costs advanced by district for Prop 84 construction project.)	
1128401 - 1. Construction of Facilities	15,761.40
1128402 - 2. Construction Management	
1128404 - 4. Easement Recording	85,345.03
1128406 - 6. Construction Survey	90.77
1128411 - Overbudget Expense	63,808.83
1128400 - Prop 84 Construction Project (All costs advanced by district for Prop 84 construction project.) - Other	1,595.00
Total 1128400 - Prop 84 Construction Project (All costs advanced by district for Prop 84 construction project.)	20,000.00
112000 - Construction in Progress (This category covers labor, materials, overhead amounts and interest costs incurred	1,000.00
Total 112000 - Construction in Progress (This category covers labor, materials, overhead amounts and interest costs inc	171,839.63
Total 112000 - Construction in Progress (This category covers labor, materials, overhead amounts and interest costs inc	121,385.04
115000 - Accumulated Depreciation and Am (This account accumulates accounts 115100-115999)	
115100 - Depreciation, Plant In Service (The cumulative depreciation and amortization charges since the time of acquisi	
115130 - Depreciation, Source of Supply (The cumulative depreciation and amortization for the SORuce of Supply Plant in	-2,648.00
115140 - Depreciation, Pumping Plant In (The cumulative depreciation and amortization for the Pumping Plant In Service	-20,293.07
115150 - Depreciation, Treatment Plant (The cumulative depreciation and amortization for the Water Treatment Pl	-1,438.02
115160 - Depreciation, Distribution Plan (The cumulative depreciation and amortization charges for the Transmission and Dic	-54,578.65
115170 - Depreciation, General Plant In (The cumulative depreciation and amortization for the General Plant In Service	-17,478.77
115100 - Depreciation, Plant In Service (The cumulative depreciation and amortization charges since the time of acquise	-99,764.00
Total 115100 - Depreciation, Plant In Service (The cumulative depreciation and amortization charges since the time of a	-196,220.51

**Quail Valley Water District
Balance Sheet**

As of December 31, 2021

	Dec 31, 21
115300 - Depreciation, Other Physical Pr (The cumulative depreciation and amortization charges since the time of acquis	-9,826.59
Total 115000 - Accumulated Depreciation and Am (This account accumulates accounts 115100-115999)	-206,047.10
Total 110000 - Property, Plant & Equipment	578,432.69
Total Fixed Assets	578,432.69
Other Assets	
120000 - Investments, Restricted Assets (Investments, Restricted Assets, & Other Long -Term Assets.)	
125000 - Other Long-Term Assets (This category covers assets not properly includible in accounts 123000-142999.)	
125100 - A/R Connection Fees	
125101 - Anderson, M.	4,882.95
125103 - Giesregen, J.	9,500.00
125106 - Lozano, M.	5,165.57
125107 - Miller, J.	8,839.19
125108 - Miller, L.	5,596.54
125111 - Stancliff R.	2,647.64
125113 - Villasenor, D.	6,365.15
125100 - A/R Connection Fees - Other	-21,892.05
Total 125100 - A/R Connection Fees	21,104.99
Total 125000 - Other Long-Term Assets (This category covers assets not properly includible in accounts 123000-142999.)	21,104.99
Total 120000 - Investments, Restricted Assets (Investments, Restricted Assets, & Other Long -Term Assets.)	21,104.99
150000 - Deferred Charges	
151000 - Preliminary Survey & Investigat (This account includes all costs for preliminary surveys, plans, and investiga	
151100 - Prop 84 Feasibility Study	442,500.32
Total 151000 - Preliminary Survey & Investigat (This account includes all costs for preliminary surveys, plans, and inv	442,500.32
150000 - Deferred Charges - Other	-1.20
Total 150000 - Deferred Charges	442,499.12
Total Other Assets	463,604.11
TOTAL ASSETS	1,182,608.92
LIABILITIES & EQUITY	
Liabilities	
Current Liabilities	
Accounts Payable	
222000 - Accounts Payable (Amounts owed on open account to private persons or organizations for goods and services furn	61,888.21
Total Accounts Payable	61,888.21
Credit Cards	
222100 - Acc Payable -Visa Cards	
222104 - 3542 - Acc Payable-FNBO-Randy	191.83
Total 222100 - Acc Payable -Visa Cards	191.83
222200 - Acc Payable - Cal Cards	
222201 - 4344 Acc Payable-CalCard-Randy	653.18
Total 222200 - Acc Payable - Cal Cards	653.18
Total Credit Cards	845.01
Other Current Liabilities	
229000 - Taxes Accrued (This account covers obligations to pay taxes (income, property, payroll, etc.) which have accru	
229331 - 331 - Federal Taxes	1,940.97
229333 - 333 - Calif State Taxes	-16.46
Total 229000 - Taxes Accrued (This account covers obligations to pay taxes (income, property, payroll, etc.) which have	1,924.51
230000 - Other Current Liabilities (This account covers miscellaneous obligations of the district due within one year a	
230101 - Loan-Hardenbrook (Loan-Hardenbrook)	11,600.00
230102 - May 2018 Voluntary Rate Increas	20,071.10
Total 230000 - Other Current Liabilities (This account covers miscellaneous obligations of the district due within one	31,671.10
24000 - Payroll Liabilities (Unpaid payroll liabilities. Amounts withheld or accrued, but not yet paid)	100.00
240000 - Deferred Credits	
242000 - Other Deferred Credits (This account includes advanced billings and receipts and other deferred credit items n	0.66
Total 240000 - Deferred Credits	0.66
Total Other Current Liabilities	33,696.27
Total Current Liabilities	96,429.49
Long Term Liabilities	
212000 - Due To Other Gov Agencies	
212100 - Due To Other State Agencies (This account includes long-term debt, other than bonds or time warrants, due to S	-63.00
212000 - Due To Other Gov Agencies - Other	-37.00
Total 212000 - Due To Other Gov Agencies	-100.00
Total Long Term Liabilities	-100.00
Total Liabilities	96,329.49

Quail Valley Water District
Balance Sheet
As of December 31, 2021

	Dec 31, 21
Equity	
250000 · Contributed Capital	
251000 · Contrib In Aid Of Cons-Plant (This account includes amounts received, in the form of grants, donations, or oth	785,081.19
251100 · ContributionsInAid-Plant-State	83,166.67
251400 · ContributionsInAid-Plant-Other	
Total 251000 · Contrib In Aid Of Cons-Plant (This account includes amounts received, in the form of grants, donations,	868,247.86
250000 · Contributed Capital - Other	
Total 250000 · Contributed Capital	25,000.00
263000 · Retained Earnings-Unreserved (This account includes the amount of accumulated earnings which are not reserved	893,247.86
30000 · Opening Balance Equity (Opening balances during setup post to this account. The balance of this account should	-306,388.62
Net Income	487,933.98
	11,486.21
Total Equity	1,086,279.43
TOTAL LIABILITIES & EQUITY	1,182,608.92

Quail Valley Water District
Statement of Cash Flows
 July through December 2021

Jul - Dec 21

OPERATING ACTIVITIES	
Net Income	11,434.69
Adjustments to reconcile Net Income to net cash provided by operations:	
137000 · Accounts Receivable	-582.23
137000 · Accounts Receivable:137121 · Accounts Receivable	-19,651.63
12100 · Inventory Asset	-1,752.49
146000 · Inventory of Material and Suppl	-3,294.14
222000 · Accounts Payable	-2,033.83
222100 · Acc Payable -Visa Cards:222104 · 3542 - Acc Payable-FNBO-Randy	191.83
222200 · Acc Payable - Cal Cards:222201 · 4344 Acc Payable-CalCard-Randy	374.36
229000 · Taxes Accrued:229331 · 331 - Federal Taxes	-104.40
229000 · Taxes Accrued:229333 · 333 - Calif State Taxes	-56.48
230000 · Other Current Liabilities:230102 · May 2018 Voluntary Rate Increas	-222.88
240000 · Deferred Credits:242000 · Other Deferred Credits	0.66
Net cash provided by Operating Activities	-15,696.54
INVESTING ACTIVITIES	
110000 · Property, Plant & Equipment:112000 · Construction in Progress	-9,987.95
110000 · Property, Plant & Equipment:112000 · Construction in Progress:112600 · Const In Progress-111600	-10,066.37
Net cash provided by Investing Activities	-20,054.32
FINANCING ACTIVITIES	
250000 · Contributed Capital:251000 · Contrib In Aid Of Cons-Plant:251100 · ContributionsInAid-Plant-State	18,830.48
Net cash provided by Financing Activities	18,830.48
Net cash increase for period	-16,920.38
Cash at beginning of period	54,548.18
Cash at end of period	37,627.80

Quail Valley Water District
Statement of Cash Flows
 October through December 2021

	Oct - Dec 21
OPERATING ACTIVITIES	
Net Income	
Adjustments to reconcile Net Income to net cash provided by operations:	11,864.61
137000 · Accounts Receivable	
137000 · Accounts Receivable:137121 · Accounts Receivable	-911.65
12100 · Inventory Asset	-1,700.33
146000 · Inventory of Material and Suppl	348.22
222000 · Accounts Payable	370.04
222100 · Acc Payable -Visa Cards:222104 · 3542 - Acc Payable-FNBO-Randy	-967.81
222200 · Acc Payable - Cal Cards:222201 · 4344 Acc Payable-CalCard-Randy	191.83
229000 · Taxes Accrued:229331 · 331 - Federal Taxes	265.41
229000 · Taxes Accrued:229333 · 333 - Calif State Taxes	81.18
240000 · Deferred Credits:242000 · Other Deferred Credits	-41.81
	0.66
Net cash provided by Operating Activities	9,500.55
INVESTING ACTIVITIES	
110000 · Property, Plant & Equipment:112000 · Construction in Progress	-4,389.90
110000 · Property, Plant & Equipment:112000 · Construction in Progress:112600 · Const In Progress-111600	-10,066.37
Net cash provided by Investing Activities	-14,456.27
FINANCING ACTIVITIES	
250000 · Contributed Capital:251000 · Contrib In Aid Of Cons-Plant:251100 · ContributionsInAid-Plant-State	6,025.26
Net cash provided by Financing Activities	6,025.26
Net cash increase for period	1,069.54
Cash at beginning of period	36,558.26
Cash at end of period	37,627.80

Quail Valley Water District
Statement of Cash Flows
 July through December 2021

	Jul - Dec 21
OPERATING ACTIVITIES	
Net Income	11,486.21
Adjustments to reconcile Net Income to net cash provided by operations:	
137000 · Accounts Receivable	-582.23
137000 · Accounts Receivable:137121 · Accounts Receivable	-27,664.88
12100 · Inventory Asset	-1,752.49
146000 · Inventory of Material and Suppl	-3,294.14
222000 · Accounts Payable	-2,033.83
222100 · Acc Payable -Visa Cards:222104 · 3542 - Acc Payable-FNBO-Randy	191.83
222200 · Acc Payable - Cal Cards:222201 · 4344 Acc Payable-CalCard-Randy	374.36
229000 · Taxes Accrued:229331 · 331 - Federal Taxes	-104.40
229000 · Taxes Accrued:229333 · 333 - Calif State Taxes	-56.48
230000 · Other Current Liabilities:230102 · May 2018 Voluntary Rate Increas	-222.88
240000 · Deferred Credits:242000 · Other Deferred Credits	0.66
Net cash provided by Operating Activities	-23,658.27
INVESTING ACTIVITIES	
110000 · Property, Plant & Equipment:111000 · Utility Plant In Service:111600 · Transmission & Distribution Pla	-1,933.12
110000 · Property, Plant & Equipment:112000 · Construction in Progress	-10,159.47
Net cash provided by Investing Activities	-12,092.59
FINANCING ACTIVITIES	
250000 · Contributed Capital:251000 · Contrib In Aid Of Cons-Plant:251100 · ContributionsInAid-Plant-State	18,830.48
Net cash provided by Financing Activities	18,830.48
Net cash increase for period	-16,920.38
Cash at beginning of period	54,548.18
Cash at end of period	37,627.80

Quail Valley Water District
Profit & Loss
 October through December 2021

Ordinary Income/Expense	Oct - Dec 21
Income	
410000 - Operating Revenues (Revenue related to District operations)	
411000 - Water Sales (This account accumulates all costs in accounts 401110-4011799.)	
411100 - Water Sales - Residential (This account includes revenues earned from water supplied to single or multiple fam	30,562.96
411200 - Water Sales - Business (This account includes revenues earned from water supplied to premises devoted primaril	14.94
Total 411000 - Water Sales (This account accumulates all costs in accounts 401110-4011799.)	30,577.90
421000 - Water Services (This account accumulates all costs in accounts 402110-402159.)	
421500 - Water Services-Other (This account includes billings for customer installations of meters and service connecti	
421650 - Late Fees	911.20
421570 - Returned Check Charges	30.00
421590 - Disconnection Fee	500.00
Total 421500 - Water Services-Other (This account includes billings for customer installations of meters and service co	1,441.20
Total 421000 - Water Services (This account accumulates all costs in accounts 402110-402159.)	1,441.20
Total 410000 - Operating Revenues (Revenue related to District operations)	32,019.10
490000 - Non-Operating Revenues (This account accumulates all costs from accounts 409100-409899.)	
491000 - Non-Operating Revenue - Rents (This account includes all rent revenues from land, buildings, or other property	
492000 - Non-Operating - Interest Revenue (This account includes interest revenues on special deposits, loans, notes, ad	50.00
493000 - Taxes and Assessments (This account accumulates all charges from accounts 409305-409365.)	1,074.25
493050 - Property Taxes-Current Secured (All taxes apportioned as a result of levies made against the unsecured roll of	
493100 - Property Taxes-Current Unsecured (All taxes apportioned as a result of levies made against the unsecured roll o	20,805.01
493200 - Property Taxes-Prior Unsecured (All taxes apportioned as a result of levies made against the unsecured rolls o	483.76
493450 - Penalties and Costs On Delinque (Include all amounts apportioned as a result of penalties and costs charged ag	15.60
493500 - Supplemental Property Taxes-Cur (Property tax revenues(secured and unsecured) received pursuant to Chapter 3 o	8.58
493600 - Supplemental-Prior Taxes & Pena (Prior year supplemental roll property taxes, interest and penalties.)	154.27
Total 493000 - Taxes and Assessments (This account accumulates all charges from accounts 409305-409365.)	25.88
495000 - Intergovernmental Revenues (This account accumulates all costs in accounts 4095100-4095359.)	21,493.10
495200 - Homeowners Property Tax Relief (This account includes amount received from the State to compensate the distric	
Total 495000 - Intergovernmental Revenues (This account accumulates all costs in accounts 4095100-4095359.)	42.87
498000 - Other Non-Operating Revenues (This account includes all non-operating revenues, which are not property includi	42.87
498530 - 530 - Miscellaneous	
Total 498000 - Other Non-Operating Revenues (This account includes all non-operating revenues, which are not property i	78.53
Total 490000 - Non-Operating Revenues (This account accumulates all costs from accounts 409100-409899.)	78.53
49900 - Uncategorized Income (Income not categorized elsewhere)	22,738.75
Total Income	-154.92
Cost of Goods Sold	54,602.93
50000 - Cost of Goods Sold (Costs of items purchased and then sold to customers)	
Total COGS	474.30
Gross Profit	474.30
Expense	54,128.63
Merchant deposit fees	
500000 - Operating Expenses	
510000 - Source of Supply	477.58
511000 - Supervision, Labor & Expense (This account includes the cost of labor and materials used and expenses incurred	
512000 - Maintenance-Structure & Improve (This account includes the cost of labor and materials used and expenses incur	0.00
Total 510000 - Source of Supply	0.00
520000 - Pumping (521000-Operation of pumping plant. 522000-Operation & maintenance of pumping plant. 523000-Energy c	0.00
521000 - Supervision, Labor & Expense (This account includes the cost of labor and materials used and expenses incurred	
522000 - Maintenance-Structures & Improv (This account includes the costs of labor and materials used and expenses incu	0.00
522661 - Wages-Maintenance, Pumping (Wages and salaries related to maintenance of pumping facilities.)	
Total 522000 - Maintenance-Structures & Improv (This account includes the costs of labor and materials used and expense	555.11
523000 - Fuel or Power Purchased-Pumping (This account includes the cost of fuel or power purchased which is used direc	555.11
523103 - SCE Montclair 1	
523108 - SCE Tangan/Bloemfontein	702.14
523111 - SCE Hackamore	53.25
523273 - SCE Country CynBooster	66.61
Total 523000 - Fuel or Power Purchased-Pumping (This account includes the cost of fuel or power purchased which is used	52.02
Total 520000 - Pumping (521000-Operation of pumping plant. 522000-Operation & maintenance of pumping plant. 523000-En	874.02
530000 - Water Treatment (531000-Operation of Water Treatment Plant (includes sampling) 532000-Maintenance & repair of	1,429.13
531000 - Supervision, Labor & Expense (This account includes the cost of labor and materials used and expenses incurred	
531100 - Chemicals-Water Quality	
531200 - Water Quality Testing	143.25
531000 - Supervision, Labor & Expense (This account includes the cost of labor and materials used and expenses incurred	1,580.00
Total 531000 - Supervision, Labor & Expense (This account includes the cost of labor and materials used and expenses in	0.00
	1,723.25

Quail Valley Water District
Profit & Loss
 October through December 2021

	Oct - Dec 21
532000 · Maintenance-Structures & impro (This account includes the costs of labor and materials used and expenses incu	
532100 · Propane (Montclair Propane)	771.37
532000 · Maintenance-Structures & impro (This account includes the costs of labor and materials used and expenses incu	582.65
Total 532000 · Maintenance-Structures & impro (This account includes the costs of labor and materials used and expense	1,354.02
Total 530000 · Water Treatment (531000-Operation of Water Treatment Plant (includes sampling) 532000-Maintenance & rep	3,077.27
540000 · Transmission & Distribution (541000-Operation of Distribution Plant 542000-Repair & Maintenance of Distributi	
541000 · Supervision, Labor & Expense (This account includes the cost of labor and materials used and expenses incurred	
541661 · Wages, Transmission & Distribut (Wages and salaries related to supervision and operation of transmission and d	171.52
Total 541000 · Supervision, Labor & Expense (This account includes the cost of labor and materials used and expenses in	171.52
542000 · Maintenance-Structures & Improv (This account includes the cost of labor and materials used and expenses incur	
542661 · Wages, Transmission & Distribut (Wages and salaries related to the maintenance of transmission and distributi	
5426611 · FLUSHING	265.08
542661 · Wages, Transmission & Distribut (Wages and salaries related to the maintenance of transmission and distributi	1,260.68
Total 542661 · Wages, Transmission & Distribut (Wages and salaries related to the maintenance of transmission and distr	1,545.76
542000 · Maintenance-Structures & Improv (This account includes the cost of labor and materials used and expenses incur	
Total 542000 · Maintenance-Structures & Improv (This account includes the cost of labor and materials used and expenses	105.51
Total 540000 · Transmission & Distribution (541000-Operation of Distribution Plant 542000-Repair & Maintenance of Dist	1,651.27
Total 540000 · Transmission & Distribution (541000-Operation of Distribution Plant 542000-Repair & Maintenance of Dist	1,822.79
550000 · Customer Accounts (551000-meter reading, billing, maintaining customer accounts. 552000-Uncollectable account	
551000 · Supervision, Meter Reading & Ot (This account includes the costs of labor and materials used and expenses incu	
551661 · Wages, Customer Accounts (Wages and salaries related to maintenance of customer accounts including meter readin	757.25
Total 551000 · Supervision, Meter Reading & Ot (This account includes the costs of labor and materials used and expense	757.25
Total 550000 · Customer Accounts (551000-meter reading, billing, maintaining customer accounts. 552000-Uncollectable a	757.25
560000 · Administrative & General	
561000 · Salaries (This account includes salaries and other considerations (but not Directors' fees) for services of of	
561661 · Wages, Administration (Wages and salaries related to general administration not chargeable to a specific accou	2,401.06
561000 · Salaries (This account includes salaries and other considerations (but not Directors' fees) for services of of	3,139.03
Total 561000 · Salaries (This account includes salaries and other considerations (but not Directors' fees) for services	5,540.09
562000 · Office Supplies & Other Expense (This account includes office supplies and other expenses incurred in connecti	
562710 · Postage	232.00
562730 · Office Supplies	120.91
562740 · Freight	64.29
562760 · Com-Telephone-Internet	746.21
562770 · Utilities-Office	
562771 · SCE Office	177.13
562772 · Propane Office	712.35
Total 562770 · Utilities-Office	889.48
562780 · Dues & Subscriptions	120.00
Total 562000 · Office Supplies & Other Expense (This account includes office supplies and other expenses incurred in co	2,172.09
563000 · Contractual Services (This account includes the fees and expenses of professional consultants and others for	192.00
564000 · Property Insurance, Injuries & (This account includes the cost of insurance or reserve accruals to protect the	1,154.75
565000 · Employee Retirement & Benefits (This account includes charges to provide for payment of benefits to retired em	
565663 · Employee Reimbursement	0.00
565664 · Wokers Comp Insurance	2,074.50
565666 · 666 - Safety Supplies	627.68
565000 · Employee Retirement & Benefits (This account includes charges to provide for payment of benefits to retired em	1,234.60
Total 565000 · Employee Retirement & Benefits (This account includes charges to provide for payment of benefits to reti	3,936.78
566000 · Franchise Requirements (This account includes payments to municipal or other governmental authorities in compl	625.50
568000 · Maintenance-General Plant (This account includes the costs assignable to customer accounts, sales and administ	
568100 · Building Maintenance	
568110 · Building Maintenance-Office	0.00
568100 · Building Maintenance - Other	826.94
Total 568100 · Building Maintenance	826.94
568640 · Op Expenses Auto	
568641 · Repair & Main-Auto	31.98
568642 · Small Tools & Supplies	262.66
568645 · Repair & Main-Equip	543.48
568646 · Fuel - Auto	476.58
568647 · Waste Disposal	32.70
568640 · Op Expenses Auto - Other	592.48
Total 568640 · Op Expenses Auto	1,939.88
Total 568000 · Maintenance-General Plant (This account includes the costs assignable to customer accounts, sales and ad	2,766.82
Total 560000 · Administrative & General	16,388.83

10:00 AM
01/26/22
Accrual Basis

Quail Valley Water District
Profit & Loss
October through December 2021

	Oct - Dec 21
570000 - Other Operating Expenses	
572000 - Taxes (This account includes the amount of federal, state, county, municipal and other taxes, which are proper)	
Total 570000 - Other Operating Expenses	<u>114.43</u>
Total 500000 - Operating Expenses	<u>114.43</u>
660000 - Payroll Expenses (Payroll expenses)	23,589.70
660010 - Bank Service Charges	18,167.74
Total Expense	<u>29.00</u>
Net Ordinary Income	<u>42,264.02</u>
Net Income	<u>11,864.61</u>
	<u>11,864.61</u>

Quail Valley Water District

Profit & Loss

July through December 2021

	Jul - Dec 21
Ordinary Income/Expense	
Income	
410000 - Operating Revenues (Revenue related to District operations)	
411000 - Water Sales (This account accumulates all costs in accounts 401110-4011799.)	
411100 - Water Sales - Residential (This account includes revenues earned from water supplied to single or multiple fam	63,919.86
411200 - Water Sales - Business (This account includes revenues earned from water supplied to premises devoted primari	14.94
Total 411000 - Water Sales (This account accumulates all costs in accounts 401110-4011799.)	63,934.80
421000 - Water Services (This account accumulates all costs in accounts 402110-402159.)	
421500 - Water Services-Other (This account includes billings for customer installations of meters and service connecti	
421550 - Late Fees	1,565.05
421570 - Returned Check Charges	30.00
421590 - Disconnection Fee	750.00
Total 421500 - Water Services-Other (This account includes billings for customer installations of meters and service co	2,345.05
421515 - 515 - Account Transfer Fee	150.00
Total 421000 - Water Services (This account accumulates all costs in accounts 402110-402159.)	2,495.05
Total 410000 - Operating Revenues (Revenue related to District operations)	66,429.85
490000 - Non-Operating Revenues (This account accumulates all costs from accounts 409100-409899.)	
491000 - Non-Operating Revenue - Rents (This account includes all rent revenues from land, buildings, or other property	175.00
492000 - Non-Operating - Interest Revenue (This account includes interest revenues on special deposits, loans, notes, ad	1,388.45
493000 - Taxes and Assessments (This account accumulates all charges from accounts 409305-409365.)	
493050 - Property Taxes-Current Secured (All taxes apportioned as a result of levies made against the unsecured roll of	20,650.71
493100 - Property Taxes-Current Unsecured (All taxes apportioned as a result of levies made against the unsecured roll o	3,954.09
493200 - Property Taxes-Prior Unsecured (All taxes apportioned as a result of levies made against the unsecured rolls o	24.66
493450 - Penalties and Costs On Delinque (Include all amounts apportioned as a result of penalties and costs charged ag	17.26
493500 - Supplemental Property Taxes-Cur (Property tax revenues(secured and unsecured) received pursuant to Chapter 3 o	427.89
493600 - Supplemental-Prior Taxes & Pena (Prior year supplemental roll property taxes, interest and penalties.)	59.49
Total 493000 - Taxes and Assessments (This account accumulates all charges from accounts 409305-409365.)	25,334.10
495000 - Intergovernmental Revenues (This account accumulates all costs in accounts 4095100-4095359.)	
495200 - Homeowners Property Tax Relief (This account includes amount received from the State to compensate the distric	42.87
Total 495000 - Intergovernmental Revenues (This account accumulates all costs in accounts 4095100-4095359.)	42.87
498000 - Other Non-Operating Revenues (This account includes all non-operating revenues, which are not properly includi	
498530 - 530 - Miscellaneous	78.53
Total 498000 - Other Non-Operating Revenues (This account includes all non-operating revenues, which are not properly i	78.53
Total 490000 - Non-Operating Revenues (This account accumulates all costs from accounts 409100-409899.)	27,018.95
49900 - Uncategorized Income (Income not categorized elsewhere)	0.00
Total Income	93,448.80
Cost of Goods Sold	
50000 - Cost of Goods Sold (Costs of items purchased and then sold to customers)	-605.59
Total COGS	-605.59
Gross Profit	94,054.39
Expense	
Merchant deposit fees	941.95
500000 - Operating Expenses	
510000 - Source of Supply	
511000 - Supervision, Labor & Expense (This account includes the cost of labor and materials used and expenses incurred	0.00
512000 - Maintenance-Structure & Improve (This account includes the cost of labor and materials used and expenses incur	0.00
Total 510000 - Source of Supply	0.00
520000 - Pumping (521000-Operation of pumping plant. 522000-Operation & maintenance of pumping plant. 523000-Energy c	
521000 - Supervision, Labor & Expense (This account includes the cost of labor and materials used and expenses incurred	0.00
522000 - Maintenance-Structures & Improv (This account includes the costs of labor and materials used and expenses incu	
522661 - Wages-Maintenance, Pumping (Wages and salaries related to maintenance of pumping facilities.)	555.11
Total 522000 - Maintenance-Structures & Improv (This account includes the costs of labor and materials used and expense	555.11
523000 - Fuel or Power Purchased-Pumping (This account includes the cost of fuel or power purchased which is used direc	
523103 - SCE Montclair 1	1,759.51
523108 - SCE Tangan/Bloemfontein	98.19
523111 - SCE Hackamore	129.93
523273 - SCE Country CynBooster	97.82
Total 523000 - Fuel or Power Purchased-Pumping (This account includes the cost of fuel or power purchased which is used	2,085.45
Total 520000 - Pumping (521000-Operation of pumping plant. 522000-Operation & maintenance of pumping plant. 523000-En	2,640.56
530000 - Water Treatment (531000-Operation of Water Treatment Plant (includes sampling) 532000-Maintenance & repair of	
531000 - Supervision, Labor & Expense (This account includes the cost of labor and materials used and expenses incurred	
531100 - Chemicals-Water Quality	427.56
531200 - Water Quality Testing	2,833.00
531000 - Supervision, Labor & Expense (This account includes the cost of labor and materials used and expenses incurred	436.59
Total 531000 - Supervision, Labor & Expense (This account includes the cost of labor and materials used and expenses in	3,697.15

Quail Valley Water District Profit & Loss

July through December 2021

	Jul - Dec 21
532000 - Maintenance-Structures & impro (This account includes the costs of labor and materials used and expenses incu	
532100 - Propane (Montclair Propane)	771.37
532000 - Maintenance-Structures & impro (This account includes the costs of labor and materials used and expenses incu	1,393.99
Total 532000 - Maintenance-Structures & impro (This account includes the costs of labor and materials used and expense	2,165.36
Total 530000 - Water Treatment (531000-Operation of Water Treatment Plant (includes sampling) 532000-Maintenance & rep	5,862.51
540000 - Transmission & Distribution (541000-Operation of Distribution Plant 542000-Repair & Maintenance of Distributi	
541000 - Supervision, Labor & Expense (This account includes the cost of labor and materials used and expenses incurred	
541661 - Wages, Transmission & Distribut (Wages and salaries related to supervision and operation of transmission and d	337.84
Total 541000 - Supervision, Labor & Expense (This account includes the cost of labor and materials used and expenses in	337.84
542000 - Maintenance-Structures & Improv (This account includes the cost of labor and materials used and expenses incur	
542661 - Wages, Transmission & Distribut (Wages and salaries related to the maintenance of transmission and distributio	
5426611 - FLUSHING	
542661 - Wages, Transmission & Distribut (Wages and salaries related to the maintenance of transmission and distributio	265.08
Total 542661 - Wages, Transmission & Distribut (Wages and salaries related to the maintenance of transmission and distr	1,291.08
542000 - Maintenance-Structures & Improv (This account includes the cost of labor and materials used and expenses incur	1,556.16
Total 542000 - Maintenance-Structures & Improv (This account includes the cost of labor and materials used and expenses	105.51
Total 540000 - Transmission & Distribution (541000-Operation of Distribution Plant 542000-Repair & Maintenance of Dist	1,661.67
550000 - Customer Accounts (551000-meter reading, billing, maintaining customer accounts. 552000-Uncollectable account	
551000 - Supervision, Meter Reading & Ot (This account includes the costs of labor and materials used and expenses incu	
551661 - Wages, Customer Accounts (Wages and salaries related to maintenace of customer accounts including meter readin	1,999.51
Total 551000 - Supervision, Meter Reading & Ot (This account includes the costs of labor and materials used and expense	913.18
Total 550000 - Customer Accounts (551000-meter reading, billing, maintaining customer accounts. 552000-Uncollectable a	913.18
560000 - Administrative & General	
561000 - Salaries (This account includes salaries and other considerations (but not Directors' fees) for services of of	
561661 - Wages, Administration (Wages and salaries related to general administration not chargeable to a specific accou	6,316.95
561000 - Salaries (This account includes salaries and other considerations (but not Directors' fees) for services of of	5,919.82
Total 561000 - Salaries (This account includes salaries and other considerations (but not Directors' fees) for services	12,236.77
562000 - Office Supplies & Other Expense (This account includes office supplies and other expenses incurred in connecti	
562710 - Postage	
562730 - Office Supplies	232.00
562740 - Freight	316.88
562760 - Com-Telephone-Internet	956.45
562770 - Utilities-Office	1,424.12
562771 - SCE Office	
562772 - Propane Office	524.17
562770 - Utilities-Office - Other	712.35
Total 562770 - Utilities-Office	184.00
562780 - Dues & Subscriptions	1,420.52
Total 562000 - Office Supplies & Other Expense (This account includes office supplies and other expenses incurred in co	390.00
563000 - Contractual Services (This account includes the fees and expenses of professional consultants and others for	4,739.97
564000 - Property Insurance, Injuries & (This account includes the cost of insurance or reserve accruals to protect the	4,043.00
565000 - Employee Retirement & Benefits (This account includes charges to provide for payment of benefits to retired em	2,309.51
565663 - Employee Reimbursement	
565664 - Workers Comp Insurance	0.00
565666 - 666 - Safety Supplies	3,386.68
565000 - Employee Retirement & Benefits (This account includes charges to provide for payment of benefits to retired em	639.53
Total 565000 - Employee Retirement & Benefits (This account includes charges to provide for payment of benefits to reti	1,971.40
566000 - Franchise Requirements (This account includes payments to municipal or other governmental authorities in compl	5,999.61
568000 - Maintenance-General Plant (This account includes the costs assignable to customer accounts, sales and administ	
568100 - Building Maintenance	625.50
568110 - Building Maintenance-Office	
568100 - Building Maintenance - Other	0.00
Total 568100 - Building Maintenance	1,083.44
568640 - Op Expenses Auto	1,083.44
568641 - Repair & Main-Auto	
568642 - Small Tools & Supplies	31.98
568645 - Repair & Main-Equip	1,108.29
568646 - Fuel - Auto	595.98
568647 - Waste Disposal	934.34
568640 - Op Expenses Auto - Other	32.70
Total 568640 - Op Expenses Auto	1,794.80
Total 568000 - Maintenance-General Plant (This account includes the costs assignable to customer accounts, sales and ad	4,498.09
560000 - Administrative & General - Other	5,581.53
Total 560000 - Administrative & General	-5.76
	35,530.13

Quail Valley Water District

Profit & Loss

July through December 2021

	Jul - Dec 21
570000 · Other Operating Expenses	
572000 · Taxes (This account includes the amount of federal, state, county, municipal and other taxes, which are proper	909.19
Total 570000 · Other Operating Expenses	909.19
Total 500000 · Operating Expenses	47,855.08
600000 · Nonoperating Expenses	
604000 · Other Nonoperating Expenses (This account includes all nonoperating expenses which are not properly includible	308.10
Total 600000 · Nonoperating Expenses	308.10
660000 · Payroll Expenses (Payroll expenses)	33,485.57
660010 · Bank Service Charges	29.00
Total Expense	82,619.70
Net Ordinary Income	11,434.69
Net Income	11,434.69

Quail Valley Water District

Register: 131000 · Cash:131003 · Union Bank

1/25/2022 9:56 AM

From 10/01/2021 through 12/31/2021

Sorted by: Date, Type, Number/Ref

Date	Number	Payee	Account	Memo	Payment	C	Deposit	Balance
10/01/2021		QuickBooks Payroll ...	2110 · Direct Deposit ...	Created by Pay...	2,869.92	X		22,229.35
10/03/2021			130000 · Undeposited ...	Deposit		X	129.92	22,359.27
10/03/2021	CCADJ		Merchant deposit fees	Batch Fee ID=...	3.00	X		22,356.27
10/04/2021			-split-	Deposit		X	329.63	22,685.90
10/04/2021	Auto Pay	Southern Calif Edison	222000 · Accounts Pay...	5910 - Bloemf...	15.83	X		22,670.07
10/04/2021	Auto Pay	Southern Calif Edison	222000 · Accounts Pay...	6411 - Country...	15.94	X		22,654.13
10/04/2021	Auto Pay	Southern Calif Edison	222000 · Accounts Pay...	0514 - Hackam...	24.03	X		22,630.10
10/04/2021	Auto Pay	Southern Calif Edison	222000 · Accounts Pay...	4719 - Sand Ca...	72.66	X		22,557.44
10/04/2021	CCADJ		Merchant deposit fees	Batch Fee ID=...	12.14	X		22,545.30
10/04/2021	DD1329	Isaias R Villafana	-split-	Direct Deposit		X		22,545.30
10/04/2021	DD1330	Randy D Hardenbrook	-split-	Direct Deposit		X		22,545.30
10/04/2021	10748	Dawnette Boatman	-split-	Direct Deposit		X		22,545.30
10/06/2021			130000 · Undeposited ...	Deposit	462.36	X		22,082.94
10/06/2021	Auto Pay	Southern Calif Edison	222000 · Accounts Pay...	2214 - Montcla...		X	149.84	22,232.78
10/06/2021	CCADJ		Merchant deposit fees	Batch Fee ID=...	365.29	X		21,867.49
10/07/2021			-split-	Deposit	5.54	X		21,861.95
10/07/2021	CCADJ		Merchant deposit fees	Batch Fee ID=...		X	416.32	22,278.27
10/07/2021	E-pay	UNITED STATES T...	-split-	77-0328828 Q...	15.47	X		22,262.80
10/07/2021	E-pay	EMPLOYMENT DE...	-split-	VOID: 698-16...	1,727.48	X		20,535.32
10/07/2021	E-pay	EMPLOYMENT DE...	229000 · Taxes Accrue...	VOID: 698-16...		X		20,535.32
10/08/2021			-split-	Deposit		X	623.04	21,158.36
10/08/2021	CCADJ		130000 · Undeposited ...	Deposit		X	103.36	21,261.72
10/10/2021			Merchant deposit fees	Batch Fee ID=...	26.32	X		21,235.40
10/10/2021			-split-	Deposit		X	419.91	21,655.31
10/10/2021	CCADJ		-split-	Deposit		X	444.58	22,099.89
10/12/2021			Merchant deposit fees	Batch Fee ID=...	24.30	X		22,075.59
10/12/2021	CCADJ		-split-	Deposit		X	667.78	22,743.37
10/13/2021			Merchant deposit fees	Batch Fee ID=...	24.28	X		22,719.09
10/13/2021	CCADJ		130000 · Undeposited ...	Deposit		X	123.28	22,842.37
10/14/2021			Merchant deposit fees	Batch Fee ID=...	4.61	X		22,837.76
10/14/2021	CCADJ		-split-	Deposit		X	433.29	23,271.05
10/14/2021	SIMSP-...	U. S. Bank - Cal Card	Merchant deposit fees	Batch Fee ID=...	15.77	X		23,255.28
10/14/2021	SIMVT-...	McMaster-Carr	222000 · Accounts Pay...	Cal Cards	1,941.07	X		21,314.21
10/14/2021	S1MSP-9...	B C Lab/Pace Analyt...	222000 · Accounts Pay...		6.96	X		21,307.25
10/14/2021	S1MSP-9...	BSK Associates	222000 · Accounts Pay...		130.00	X		21,177.25
10/14/2021	S1MSP-9...	BSK Associates	222000 · Accounts Pay...		332.00	X		20,845.25
10/14/2021	S1MSP-9...	CALNET3	222000 · Accounts Pay...		52.00	X		20,793.25
10/14/2021	S1MSP-9...	McMaster-Carr	222000 · Accounts Pay...		95.11	X		20,698.14
10/14/2021	S1MSP-9...	McMaster-Carr	222000 · Accounts Pay...		276.83	X		20,421.31
10/14/2021	S1MSP-9...	McMaster-Carr	222000 · Accounts Pay...		111.59	X		20,309.72

Quail Valley Water District

1/25/2022 9:56 AM

Register: 131000 · Cash:131003 · Union Bank

From 10/01/2021 through 12/31/2021

Sorted by: Date, Type, Number/Ref

Date	Number	Payee	Account	Memo	Payment	C	Deposit	Balance
10/14/2021	S1MSP-9...	McMaster-Carr	222000 · Accounts Pay...		425.52	X		19,884.20
10/14/2021	S1MSP-9...	State Compensation I...	222000 · Accounts Pay...	Premium Char...	691.50	X		19,192.70
10/15/2021			130000 · Undeposited ...	Deposit		X	169.76	19,362.46
10/15/2021	CCADJ		Merchant deposit fees	Batch Fee ID=...	6.24	X		19,356.22
10/15/2021	S1QYL-...	Bill R. Walker CPA	222000 · Accounts Pay...		2,500.00	X		16,856.22
10/15/2021		QuickBooks Payroll ...	2110 · Direct Deposit ...	Created by Pay...	3,374.11	X		13,482.11
10/16/2021	CCADJ		Merchant deposit fees	Batch Fee ID=...	5.39	X		13,476.72
10/17/2021			130000 · Undeposited ...	Deposit		X	145.43	13,622.15
10/18/2021	DD1331	Dan L Casteel	-split-	Direct Deposit		X		13,622.15
10/18/2021	DD1332	Isaias R Villafana	-split-	Direct Deposit		X		13,622.15
10/18/2021	DD1333	Randy D Hardenbrook	-split-	Direct Deposit		X		13,622.15
10/18/2021	10749	Dawnette Boatman	-split-		442.28	X		13,179.87
10/20/2021			130000 · Undeposited ...	Deposit		X	249.44	13,429.31
10/20/2021	CCADJ		Merchant deposit fees	Batch Fee ID=...	9.03	X		13,420.28
10/21/2021			130000 · Undeposited ...	Deposit		X	216.24	13,636.52
10/21/2021	CCADJ		Merchant deposit fees	Batch Fee ID=...	3.00	X		13,633.52
10/21/2021	E-pay	EMPLOYMENT DE...	-split-	698-1692-4 Q...	39.19	X		13,594.33
10/21/2021	E-pay	EMPLOYMENT DE...	229000 · Taxes Accrue...	698-1692-4 Q...	239.81	X		13,354.52
10/26/2021			130000 · Undeposited ...	Deposit		X	136.56	13,491.08
10/26/2021	Auto Pay	Union Bank - Visa	222000 · Accounts Pay...	Internet Storage	7.49	X		13,483.59
10/26/2021	CCADJ		Merchant deposit fees	Batch Fee ID=...	5.08	X		13,478.51
10/28/2021			-split-	Deposit		X	2,098.56	15,577.07
10/28/2021			-split-	Deposit		X	1,871.88	17,448.95
10/28/2021	S31SC-V...	U. S. Bank - Cal Card	222000 · Accounts Pay...		1,634.94	X		15,814.01
10/28/2021	S31SC-V...	BSK Associates	222000 · Accounts Pay...		78.00	X		15,736.01
10/28/2021	S31SC-V...	B C Lab/Pace Analyt...	222000 · Accounts Pay...		130.00	X		15,606.01
10/29/2021		QuickBooks Payroll ...	2110 · Direct Deposit ...	Created by Pay...	3,727.56	X		11,878.45
10/30/2021	CCADJ		Merchant deposit fees	Batch Fee ID=...	4.61	X		11,873.84
10/31/2021			130000 · Undeposited ...	Deposit		X	123.28	11,997.12
10/31/2021			130000 · Undeposited ...	Deposit		X	242.80	12,239.92
10/31/2021	CCADJ		Merchant deposit fees	Batch Fee ID=...	8.80	X		12,231.12
11/01/2021	DD1334	Dan L Casteel	-split-	Direct Deposit		X		12,231.12
11/01/2021	DD1335	Isaias R Villafana	-split-	Direct Deposit		X		12,231.12
11/01/2021	DD1336	Randy D Hardenbrook	-split-	Direct Deposit		X		12,231.12
11/01/2021	10750	Dawnette Boatman	-split-		442.28	X		11,788.84
11/02/2021			130000 · Undeposited ...	Deposit		X	143.20	11,932.04
11/02/2021	Auto Pay	Southern Calif Edison	222000 · Accounts Pay...	5910 - Bloemf...	16.82	X		11,915.22
11/02/2021	Auto Pay	Southern Calif Edison	222000 · Accounts Pay...	0514 - Hackam...	23.98	X		11,891.24
11/02/2021	Auto Pay	Southern Calif Edison	222000 · Accounts Pay...	6411 - Country...	16.48	X		11,874.76
11/02/2021	CCADJ		Merchant deposit fees	Batch Fee ID=...	3.00	X		11,871.76

Quail Valley Water District

Register: 131000 · Cash:131003 · Union Bank

1/25/2022 9:56 AM

From 10/01/2021 through 12/31/2021

Sorted by: Date, Type, Number/Ref

Date	Number	Payee	Account	Memo	Payment	C	Deposit	Balance
11/03/2021	Auto Pay	Southern Calif Edison	222000 · Accounts Pay...	4719 - Sand Ca...	40.07	X		11,831.69
11/04/2021			-split-	Deposit		X	1,282.40	13,114.09
11/04/2021	CCADJ		Merchant deposit fees	Batch Fee ID=...	46.67	X		13,067.42
11/05/2021			-split-	Deposit		X	499.76	13,567.18
11/05/2021	CCADJ		Merchant deposit fees	Batch Fee ID=...	18.69	X		13,548.49
11/06/2021	CCADJ		Merchant deposit fees	Batch Fee ID=...	3.00	X		13,545.49
11/07/2021			130000 · Undeposited ...	Deposit		X	110.00	13,655.49
11/08/2021			-split-	Deposit		X	1,758.05	15,413.54
11/08/2021	Auto Pay	Southern Calif Edison	222000 · Accounts Pay...	2214 - Quail Ri...	256.88	X	226.64	15,640.18
11/08/2021	CCADJ		Merchant deposit fees	Batch Fee ID=...	8.53	X		15,383.30
11/09/2021			130000 · Undeposited ...	Deposit		X	103.36	15,374.77
11/09/2021	CCADJ		Merchant deposit fees	Batch Fee ID=...	3.00	X		15,478.13
11/09/2021	E-pay	UNITED STATES T...	-split-	77-0328828 Q...	1,723.24	X		15,475.13
11/09/2021	E-pay	EMPLOYMENT DE...	-split-	VOID: 698-16...		X		13,751.89
11/09/2021	E-pay	EMPLOYMENT DE...	229000 · Taxes Accrue...	698-1692-4 Q...	241.22	X		13,751.89
11/09/2021	154	Hagie, James	137000 · Accounts Rec...	Bounced Chec...	109.64	X		13,510.67
11/09/2021	155	Hagie, James	660010 · Bank Service ...	Bank service c...	9.00	X		13,401.03
11/10/2021			-split-	Deposit		X	136.56	13,392.03
11/10/2021	CCADJ		Merchant deposit fees	Batch Fee ID=...	5.38	X		13,528.59
11/10/2021	E-pay	EMPLOYMENT DE...	-split-	698-1692-4 Q...	2.59	X		13,523.21
11/11/2021	S4GWW...	State Compensation L...	222000 · Accounts Pay...	Premium 11/01...	691.50	X		13,520.62
11/11/2021	S4GWW...	CALNET3	222000 · Accounts Pay...	10/06/2021 to ...	95.44	X		12,829.12
11/12/2021			-split-	Deposit		X	365.56	12,733.68
11/12/2021	CCADJ		Merchant deposit fees	Batch Fee ID=...	13.70	X		13,099.24
11/12/2021		QuickBooks Payroll ...	2110 · Direct Deposit ...	Created by Pay...	3,547.79	X		13,085.54
11/15/2021	DD1337	Dan L Casteel	-split-	Direct Deposit		X		9,537.75
11/15/2021	DD1338	Isaias R Villafana	-split-	Direct Deposit		X		9,537.75
11/15/2021	DD1339	Randy D Hardenbrook	-split-	Direct Deposit		X		9,537.75
11/15/2021	10751	Dawnette Boatman	-split-		478.84	X		9,537.75
11/21/2021			130000 · Undeposited ...	Deposit		X	229.52	9,058.91
11/21/2021	CCADJ		Merchant deposit fees	Batch Fee ID=...	3.00	X		9,288.43
11/23/2021			-split-	Deposit		X	389.02	9,285.43
11/23/2021	CCADJ		Merchant deposit fees	Batch Fee ID=...	14.21	X		9,674.45
11/24/2021			-split-	Deposit		X	2,679.03	9,660.24
11/24/2021			490000 · Non-Operatin...	Deposit		X	78.53	12,339.27
11/24/2021		23/6717:Michael (M...	-split-	Credit Card Ch...	154.92	X		12,417.80
11/24/2021		23/6717:Michael (M...	-split-	Credit Card Ch...	154.92	X		12,262.88
11/24/2021	CCADJ		Merchant deposit fees	Batch Fee ID=...	6.24	X		12,107.96
11/25/2021			130000 · Undeposited ...	Deposit		X	169.76	12,101.72
								12,271.48

Quail Valley Water District

1/25/2022 9:56 AM

Register: 131000 · Cash:131003 · Union Bank

From 10/01/2021 through 12/31/2021

Sorted by: Date, Type, Number/Ref

Date	Number	Payee	Account	Memo	Payment	C	Deposit	Balance
11/25/2021			130000 · Undeposited ...	Deposit		X	136.56	12,408.04
11/25/2021	CCADJ		Merchant deposit fees	Batch Fee ID=...	5.08	X		12,402.96
11/26/2021			130000 · Undeposited ...	Deposit		X	242.80	12,645.76
11/26/2021	CCADJ		Merchant deposit fees	Batch Fee ID=...	8.80	X		12,636.96
11/26/2021		QuickBooks Payroll ...	2110 · Direct Deposit ...	Created by Pay...	3,232.53	X		9,404.43
11/29/2021			130000 · Undeposited ...	Deposit		X	138.79	9,543.22
11/29/2021	Auto Pay	Union Bank - Visa	222000 · Accounts Pay...	Internet Storage	7.49	X		9,535.73
11/29/2021	CCADJ		Merchant deposit fees	Batch Fee ID=...	5.16	X		9,530.57
11/29/2021	DD1340	Dan L Casteel	-split-	Direct Deposit		X		9,530.57
11/29/2021	DD1341	Isaias R Villafana	-split-	Direct Deposit		X		9,530.57
11/29/2021	DD1342	Randy D Hardenbrook	-split-	Direct Deposit		X		9,530.57
11/29/2021	10753	Dawnette Boatman	-split-		442.28	X		9,088.29
11/30/2021			130000 · Undeposited ...	Deposit		X	189.39	9,277.68
11/30/2021	CCADJ		Merchant deposit fees	Batch Fee ID=...	6.93	X		9,270.75
12/01/2021			130000 · Undeposited ...	Deposit		X	136.56	9,407.31
12/01/2021			130000 · Undeposited ...	Deposit		X	236.16	9,643.47
12/01/2021		Southern Calif Edison	222000 · Accounts Pay...		127.06	X		9,516.41
12/01/2021	CCADJ		Merchant deposit fees	Batch Fee ID=...	11.57	X		9,504.84
12/02/2021			-split-	Deposit		X	1,087.88	10,592.72
12/05/2021			130000 · Undeposited ...	Deposit		X	156.48	10,749.20
12/05/2021	CCADJ		Merchant deposit fees	Batch Fee ID=...	3.00	X		10,746.20
12/06/2021		Southern Calif Edison	222000 · Accounts Pay...	2214 - Quail Ri...	215.85	X		10,530.35
12/08/2021	10754		131000 · Cash:131001 ...		1,300.00	X		9,230.35
12/09/2021			-split-	Deposit		X	536.88	9,767.23
12/09/2021	CCADJ		Merchant deposit fees	Batch Fee ID=...	19.68	X		9,747.55
12/10/2021			-split-	Deposit		X	1,006.16	10,753.71
12/10/2021	CCADJ		Merchant deposit fees	Batch Fee ID=...	37.61	X		10,716.10
12/10/2021		QuickBooks Payroll ...	2110 · Direct Deposit ...	Created by Pay...	3,450.30	X		7,265.80
12/11/2021	CCADJ		Merchant deposit fees	Batch Fee ID=...	3.00	X		7,262.80
12/12/2021			130000 · Undeposited ...	Deposit		X	229.52	7,492.32
12/12/2021			130000 · Undeposited ...	Deposit		X	123.28	7,615.60
12/12/2021			130000 · Undeposited ...	Deposit		X	110.00	7,725.60
12/12/2021	CCADJ		Merchant deposit fees	Batch Fee ID=...	7.61	X		7,717.99
12/13/2021			-split-	Deposit		X	279.47	7,997.46
12/13/2021	CCADJ		Merchant deposit fees	Batch Fee ID=...	10.68	X		7,986.78
12/13/2021	DD1343	Dan L Casteel	-split-	Direct Deposit		X		7,986.78
12/13/2021	DD1344	Isaias R Villafana	-split-	Direct Deposit		X		7,986.78
12/13/2021	DD1345	Randy D Hardenbrook	-split-	Direct Deposit		X		7,986.78
12/13/2021	10755	Dawnette Boatman	-split-		508.16	X		7,478.62
12/15/2021			130000 · Undeposited ...	Deposit		X	121.00	7,599.62

Quail Valley Water District

Register: 131000 · Cash:131003 · Union Bank

1/25/2022 9:56 AM

From 10/01/2021 through 12/31/2021

Sorted by: Date, Type, Number/Ref

Date	Number	Payee	Account	Memo	Payment	C	Deposit	Balance
12/15/2021	CCADJ		Merchant deposit fees	Batch Fee ID=...	4.54	X		7,595.08
12/16/2021			130000 · Undeposited ...	Deposit			113.70	7,708.78
12/16/2021	CCADJ		Merchant deposit fees	Batch Fee ID=...	4.28	X		7,704.50
12/16/2021	S80SB-9...	U. S. Bank - Cal Card	222000 · Accounts Pay...		2,710.79	X		4,993.71
12/17/2021			130000 · Undeposited ...	Deposit			169.76	5,163.47
12/17/2021	CCADJ		Merchant deposit fees	Batch Fee ID=...	6.24	X		5,157.23
12/19/2021			-split-	Deposit			293.13	5,450.36
12/19/2021	CCADJ		Merchant deposit fees	Batch Fee ID=...	10.86	X		5,439.50
12/21/2021			-split-	Deposit			2,436.86	7,876.36
12/21/2021			130000 · Undeposited ...	Deposit			152.07	8,028.43
12/21/2021	CCADJ		Merchant deposit fees	Batch Fee ID=...	5.62	X		8,022.81
12/21/2021	E-pay	UNITED STATES T...	-split-	77-0328828 Q...	2,880.04	X		5,142.77
12/21/2021	E-pay	EMPLOYMENT DE...	229000 · Taxes Accrue...	698-1692-4 Q...	362.24	X		4,780.53
12/22/2021	S80SB-9...	B C Lab/Pace Analyt...	222000 · Accounts Pay...		320.00	X		4,460.53
12/22/2021	S80SB-9...	BSK Associates	222000 · Accounts Pay...	Fe, Mn sample ...	116.00	X		4,344.53
12/22/2021	S80SB-9...	CALNET3	222000 · Accounts Pay...		93.66	X		4,250.87
12/22/2021	S80SB-9...	State Compensation I...	222000 · Accounts Pay...	December Pre...	691.50	X		3,559.37
12/23/2021			130000 · Undeposited ...	Deposit			110.00	3,669.37
12/23/2021	CCADJ		Merchant deposit fees	Batch Fee ID=...	4.15	X		3,665.22
12/24/2021		QuickBooks Payroll ...	2110 · Direct Deposit ...	Created by Pay...	3,077.69	X		587.53
12/25/2021		Union Bank - Visa	222000 · Accounts Pay...	VISA Cards	7.49	X		580.04
12/27/2021	DD1346	Dan L Casteel	-split-	Direct Deposit				580.04
12/27/2021	DD1348	Randy D Hardenbrook	-split-	Direct Deposit				580.04
12/27/2021	10756	Dawnette Boatman	-split-		442.28	X		137.76
12/27/2021	DD1347	Isaias R Villafana	-split-	Direct Deposit				137.76
12/29/2021			-split-	Deposit			411.10	548.86
12/29/2021	CCADJ		Merchant deposit fees	Batch Fee ID=...	14.99	X		533.87
12/30/2021			-split-	Deposit			1,096.58	1,630.45
12/30/2021			130000 · Undeposited ...	Deposit			156.48	1,786.93
12/30/2021	CCADJ		Merchant deposit fees	Batch Fee ID=...	5.78	X		1,781.15
12/31/2021			130000 · Undeposited ...	Deposit			103.36	1,884.51
12/31/2021			660010 · Bank Service ...	Service Charge	10.00			1,874.51
12/31/2021			660010 · Bank Service ...	Service Charge	10.00	X		1,864.51
12/31/2021	CCADJ		Merchant deposit fees	Batch Fee ID=...	3.00			1,861.51

Quail Valley Water District Reconciliation Summary

131003 - Union Bank, Period Ending 12/31/2021

	Dec 31, 21
Beginning Balance	6,409.26
Cleared Transactions	
Checks and Payments - 32 items	-16,469.60
Deposits and Credits - 31 items	11,831.49
Total Cleared Transactions	-4,638.11
Cleared Balance	1,771.15
Uncleared Transactions	
Checks and Payments - 1 item	-3.00
Deposits and Credits - 1 item	103.36
Total Uncleared Transactions	100.36
Register Balance as of 12/31/2021	1,871.51
New Transactions	
Checks and Payments - 1 item	-3.00
Total New Transactions	-3.00
Ending Balance	1,868.51



STATEMENT OF ACCOUNTS

UNION BANK
STOCKDALE VILLAGE 0441
P.O. BOX 60368
PHOENIX AZ 85082-0368

Page 1 of 3
Statement Number: 2740026359
12/01/21 - 12/31/21

Telephone Banking
For 24-hour Automated Direct Service
800-238-4486
800-826-7345(TDD)
Representatives are available
Monday through Saturday

To open additional accounts,
or apply for loans, call your
banking office at 661-322-5035

You may also access your account online
at unionbank.com

Thank you for banking with us
since 2014

QUAIL VALLEY WATER DISTRICT
24750 SAND CANYON RD
TEHACHAPI CA 93561-8115

Business Essentials Checking Summary

Days in statement period: 31

Account Number: 2740026359

Balance on 12/1	\$		6,409.26
Additions			11,831.49
Subtractions			-16,469.60
		Checks	-2,460.10
		Payments	-13,999.50
		Other Withdrawals	-10.00
Balance on 12/31	\$		<u>1,771.15</u>
Statement Average Ledger Balance			5,539.47

Additions

Date	Description/Location	Reference	Amount
12/1	INTUIT 29063965 DEPOSIT CCD 524771992259814	53387017	\$ 189.39✓
12/2	INTUIT 26461045 DEPOSIT CCD 524771992259814	54759476	372.72✓
12/6	OFFICE DEPOSIT	75753729	1,087.88✓
12/6	OFFICE DEPOSIT	75753675	2,679.03✓
12/10	INTUIT 62649465 DEPOSIT CCD 524771992259814	57359250	156.48✓
12/13	INTUIT 89014485 DEPOSIT CCD 524771992259814	52719697	536.88✓
12/13	INTUIT 94490655 DEPOSIT CCD 524771992259814	53881940	229.52✓
12/13	INTUIT 97526295 DEPOSIT CCD 524771992259814	53882214	233.28✓
12/13	INTUIT 91285275 DEPOSIT CCD 524771992259814	54200555	1,006.16✓
12/14	INTUIT 05142775 DEPOSIT CCD 524771992259814	55534056	279.47✓
12/16	INTUIT 16356945 DEPOSIT CCD 524771992259814	58326104	121.00✓
12/17	INTUIT 23342115 DEPOSIT CCD 524771992259814	59469487	113.70✓
12/20	INTUIT 32148855 DEPOSIT CCD 524771992259814	50941372	169.76✓
12/20	INTUIT 42265095 DEPOSIT CCD 524771992259814	50633873	293.13✓
12/21	OFFICE DEPOSIT	75804048	2,436.86✓
12/22	INTUIT 48946135 DEPOSIT CCD 524771992259814	53626418	152.07✓
12/24	INTUIT 64290015 DEPOSIT CCD 524771992259814	55976214	110.00✓
12/30	INTUIT 84643455 DEPOSIT CCD 524771992259814	50956838	411.10✓
12/31	OFFICE DEPOSIT	75783243	1,096.58✓
12/31	INTUIT 90752805 DEPOSIT CCD 524771992259814	52044333	156.48✓
Total			<u>\$ 11,831.49</u>

Checks

Number	Date	Reference	Amount	Number	Date	Reference	Amount
8861	12/29	06751670	116.00✓	10755	12/28	07520768	508.16✓

Checks

Number	Date	Reference	Amount	Number	Date	Reference	Amount
8862	12/27	06873044	93.66 ✓	10756	12/28	07520766	442.28 ✓
10754*	12/8	77314251	1,300.00 ✓				
Total							\$ 2,460.10

* Checks missing in sequence. Out of sequence check numbers may also be located in the Payments section of your statement.

Payments online and electronic banking

Date	Description/Location	Reference	Amount
12/1	INTUIT 77488255 TRAN FEE CCD 53388411		\$ 6.93 ✓
	524771992259814		
12/1	SO CAL EDISON CO DIRECTPAY CCD 52525924		16.81 ✓
	700396743683		
12/1	SO CAL EDISON CO DIRECTPAY CCD 52525455		18.21 ✓
	700177696263		
12/1	SO CAL EDISON CO DIRECTPAY CCD 52525456		19.41 ✓
	700202464407		
12/1	SO CAL EDISON CO DIRECTPAY CCD 52525457		72.63 ✓
	700297124986		
12/2	INTUIT 74803535 TRAN FEE CCD 54784519		11.57 ✓
	524771992259814		
12/6	INTUIT 12968065 TRAN FEE CCD 57358054		3.00 ✓
	524771992259814		
12/6	SO CAL EDISON CO DIRECTPAY CCD 56863274		215.85 ✓
	700157682638		
12/10	INTUIT 39714205 TRAN FEE CCD 52718403		19.68 ✓
	524771992259814		
12/10	INTUIT PAYROLL S QUICKBOOKS CCD 770328828	52836228	3,450.30 ✓
12/13	INTUIT 45237415 TRAN FEE CCD 53881030		3.00 ✓
	524771992259814		
12/13	INTUIT 48084975 TRAN FEE CCD 53881312		7.61 ✓
	524771992259814		
12/13	INTUIT 41848125 TRAN FEE CCD 54199213		37.61 ✓
	524771992259814		
12/14	INTUIT 55647785 TRAN FEE CCD 55535218		10.68 ✓
	524771992259814		
12/16	US BANK CORP ONLINE PMT CCD 58517646		2,710.79 ✓
	UN1330586897POS		
12/16	INTUIT 67110825 TRAN FEE CCD 58327356		4.54 ✓
	524771992259814		
12/17	INTUIT 73975215 TRAN FEE CCD 59470747		4.28 ✓
	524771992259814		
12/20	INTUIT 83045555 TRAN FEE CCD 50942624		6.24 ✓
	524771992259814		
12/20	INTUIT 92142005 TRAN FEE CCD 50634805		10.86 ✓
	524771992259814		
12/22	PACE ANALYTICAL ONLINE PMT CCD 52864153		320.00 ✓
	UN1330586897POS		
12/22	STATE COMPENSATI ONLINE PMT CCD 52864618		691.50 ✓
	UN1330586897POS		
12/22	INTUIT 00035435 TRAN FEE CCD 53625210		5.62 ✓
	524771992259814		
12/23	EMPLOYMENT DEVEL EDD EFTPMT CCD 54536237		362.24 ✓
	814705440		
12/23	IRS USATAXPYMT CCD 225175700670565	54114687	2,880.04 ✓
12/24	INTUIT 15287245 TRAN FEE CCD 55975028		4.15 ✓
	524771992259814		
12/24	INTUIT PAYROLL S QUICKBOOKS CCD 770328828	56084809	3,077.69 ✓

Payments *online and electronic banking*

Date	Description/Location	Reference	Amount
12/28	1ST BANKCARD CTR ONLINE PMT CCD CC0006854169	58427261	7.49 ✓
12/30	INTUIT 36213365 TRAN FEE CCD 524771992259814	50955776	14.99 ✓
12/31	INTUIT 42221775 TRAN FEE CCD 524771992259814	52043263	5.78 ✓
Total			\$ 13,999.50

Other Withdrawals *including fees and adjustments*

Date	Description/Location	Reference	Amount
12/31	SERVICE CHARGE WITH ONLINE STATEMENT		\$ 10.00 ✓

About Your Monthly Service Charge

No Monthly Service Charge when you have any one of the following:

- keep at least \$3,000.00 in your account at all times
- keep an average balance of at least \$6,000.00 in your checking account -- your average checking balance between 12/1 and 12/31 was \$ 5,539.47
- keep a Combined Balance of at least \$7,500.00 in your combined checking, savings, time deposit and money market accounts -- your Combined Balance between 12/1 and 12/31 was \$ 5,539.47

Your account was charged a monthly service charge. You may be able to avoid this charge in the future by changing to a different type of account. Call Telephone Banking at 800-238-4486 for details.

Quail Valley Water District
Reconciliation Summary
131003 · Union Bank, Period Ending 11/30/2021

	Nov 30, 21
Beginning Balance	12,086.45
Cleared Transactions	
Checks and Payments - 38 items	-12,053.78
Deposits and Credits - 22 items	6,376.59
Total Cleared Transactions	-5,677.19
Cleared Balance	6,409.26
Uncleared Transactions	
Checks and Payments - 1 item	-6.93
Deposits and Credits - 5 items	2,868.42
Total Uncleared Transactions	2,861.49
Register Balance as of 11/30/2021	9,270.75
New Transactions	
Checks and Payments - 21 items	-9,652.39
Deposits and Credits - 17 items	4,599.98
Total New Transactions	-5,052.41
Ending Balance	4,218.34

Quail Valley Water District Reconciliation Detail

131003 · Union Bank, Period Ending 11/30/2021

Type	Date	Num	Name	Cir	Amount	Balance
Beginning Balance						
Cleared Transactions						
Checks and Payments - 38 items						12,086.45
Bill Pmt -Check	10/14/2021	S1MS...	B C Lab/Pace Analy...	X	-130.00	-130.00
Bill Pmt -Check	10/28/2021	S31S...	BSK Associates	X	-78.00	-208.00
Check	10/30/2021	CCADJ		X	-4.61	-212.61
Check	10/31/2021	CCADJ		X	-8.80	-221.41
Paycheck	11/01/2021	10750	Dawnette Boatman	X	-442.28	-663.69
Bill Pmt -Check	11/02/2021	Auto P...	Southern Calif Edison	X	-23.98	-687.67
Bill Pmt -Check	11/02/2021	Auto P...	Southern Calif Edison	X	-16.82	-704.49
Check	11/02/2021	CCADJ		X	-16.48	-720.97
Bill Pmt -Check	11/03/2021	Auto P...	Southern Calif Edison	X	-3.00	-723.97
Check	11/04/2021	CCADJ		X	-40.07	-764.04
Check	11/05/2021	CCADJ		X	-46.67	-810.71
Check	11/05/2021	CCADJ		X	-18.69	-829.40
Bill Pmt -Check	11/08/2021	Auto P...	Southern Calif Edison	X	-3.00	-832.40
Check	11/08/2021	CCADJ		X	-256.88	-1,089.28
Liability Check	11/09/2021	E-pay	UNITED STATES T...	X	-8.53	-1,097.81
Liability Check	11/09/2021	E-pay	EMPLOYMENT DE...	X	-1,723.24	-2,821.05
General Journal	11/09/2021	154	Hagie, James	X	-241.22	-3,062.27
General Journal	11/09/2021	155	Hagie, James	X	-109.64	-3,171.91
Check	11/09/2021	CCADJ		X	-9.00	-3,180.91
Check	11/10/2021	CCADJ		X	-3.00	-3,183.91
Liability Check	11/10/2021	E-pay	EMPLOYMENT DE...	X	-5.38	-3,189.29
Bill Pmt -Check	11/11/2021	S4GW...	State Compensation...	X	-2.59	-3,191.88
Bill Pmt -Check	11/11/2021	S4GW...	CALNET3	X	-691.50	-3,883.38
Liability Check	11/12/2021		QuickBooks Payroll ...	X	-95.44	-3,978.82
Check	11/12/2021	CCADJ		X	-3,547.79	-7,526.61
Paycheck	11/15/2021	10751	Dawnette Boatman	X	-13.70	-7,540.31
Check	11/21/2021	CCADJ		X	-478.84	-8,019.15
Check	11/23/2021	CCADJ		X	-3.00	-8,022.15
Check	11/24/2021		23/6717:Michael (M...	X	-14.21	-8,036.36
Check	11/24/2021		23/6717:Michael (M...	X	-154.92	-8,191.28
Check	11/24/2021	CCADJ		X	-154.92	-8,346.20
Check	11/25/2021	CCADJ		X	-6.24	-8,352.44
Liability Check	11/26/2021		QuickBooks Payroll ...	X	-5.08	-8,357.52
Check	11/26/2021	CCADJ		X	-3,232.53	-11,590.05
Paycheck	11/29/2021	10753	Dawnette Boatman	X	-8.80	-11,598.85
Bill Pmt -Check	11/29/2021	Auto P...	Union Bank - Visa	X	-442.28	-12,041.13
Check	11/29/2021	CCADJ		X	-7.49	-12,048.62
					-5.16	-12,053.78
Total Checks and Payments					-12,053.78	-12,053.78
Deposits and Credits - 22 items						
Deposit	10/31/2021			X	123.28	123.28
Deposit	10/31/2021			X	242.80	366.08
Deposit	11/02/2021			X	143.20	509.28
Deposit	11/04/2021			X	1,282.40	1,791.68
Deposit	11/05/2021			X	499.76	2,291.44
Deposit	11/07/2021			X	110.00	2,401.44
Deposit	11/08/2021			X	226.64	2,628.08
Liability Check	11/09/2021	E-pay	EMPLOYMENT DE...	X	1,758.05	4,386.13
Deposit	11/09/2021			X	0.00	4,386.13
Deposit	11/10/2021			X	103.36	4,489.49
Deposit	11/12/2021			X	136.56	4,626.05
Paycheck	11/15/2021	DD1338	Isaias R Villafana	X	365.56	4,991.61
Paycheck	11/15/2021	DD1337	Dan L Casteel	X	0.00	4,991.61
Paycheck	11/15/2021	DD1339	Randy D Harwoodbrook	X	0.00	4,991.61
Deposit	11/21/2021			X	0.00	4,991.61
Deposit	11/23/2021			X	229.52	5,221.13
Deposit	11/24/2021			X	369.02	5,610.15
Deposit	11/25/2021			X	78.53	5,688.68
Deposit	11/25/2021			X	136.56	5,825.24
Deposit	11/25/2021			X	169.76	5,995.00

Quail Valley Water District
Reconciliation Detail
131003 · Union Bank, Period Ending 11/30/2021

Type	Date	Num	Name	Clr	Amount	Balance
Deposit	11/26/2021			X	242.80	6,237.80
Deposit	11/29/2021			X	138.79	6,376.59
Total Deposits and Credits					6,376.59	6,376.59
Total Cleared Transactions					-5,677.19	-5,677.19
Cleared Balance					-5,677.19	6,409.26
Uncleared Transactions						
Checks and Payments - 1 item						
Check	11/30/2021	CCADJ			-6.93	-6.93
Total Checks and Payments					-6.93	-6.93
Deposits and Credits - 5 items						
Deposit	11/24/2021				2,679.03	2,679.03
Paycheck	11/29/2021	DD1342	Randy D Haddenbrook		0.00	2,679.03
Paycheck	11/29/2021	DD1340	Dan L Casteel		0.00	2,679.03
Paycheck	11/29/2021	DD1341	Isaias R Villafana		0.00	2,679.03
Deposit	11/30/2021				189.39	2,868.42
Total Deposits and Credits					2,868.42	2,868.42
Total Uncleared Transactions					2,861.49	2,861.49
Register Balance as of 11/30/2021					-2,815.70	9,270.75
New Transactions						
Checks and Payments - 21 items						
Bill Pmt -Check	12/01/2021		Southern Calif Edison		-127.06	-127.06
Check	12/01/2021	CCADJ			-11.57	-138.63
Check	12/05/2021	CCADJ			-3.00	-141.63
Bill Pmt -Check	12/06/2021		Southern Calif Edison		-215.85	-357.48
Check	12/08/2021	10754			-1,300.00	-1,657.48
Check	12/09/2021	CCADJ			-19.68	-1,677.16
Liability Check	12/10/2021		QuickBooks Payroll ...		-3,450.30	-5,127.46
Check	12/10/2021	CCADJ			-37.61	-5,165.07
Check	12/11/2021	CCADJ			-3.00	-5,168.07
Check	12/12/2021	CCADJ			-7.61	-5,175.68
Paycheck	12/13/2021	10755	Dawnette Boatman		-508.16	-5,683.84
Check	12/13/2021	CCADJ			-10.68	-5,694.52
Check	12/15/2021	CCADJ			-4.54	-5,699.06
Bill Pmt -Check	12/16/2021	S80S...	U. S. Bank - Cal Card		-2,710.79	-8,409.85
Check	12/16/2021	CCADJ			-4.28	-8,414.13
Check	12/17/2021	CCADJ			-6.24	-8,420.37
Check	12/19/2021	CCADJ			-10.86	-8,431.23
Bill Pmt -Check	12/22/2021	S80S...	State Compensation...		-691.50	-9,122.73
Bill Pmt -Check	12/22/2021	S80S...	B C Lab/Pace Analy...		-320.00	-9,442.73
Bill Pmt -Check	12/22/2021	S80S...	BSK Associates		-116.00	-9,558.73
Bill Pmt -Check	12/22/2021	S80S...	CALNET3		-93.66	-9,652.39
Total Checks and Payments					-9,652.39	-9,652.39
Deposits and Credits - 17 items						
Deposit	12/01/2021				136.56	136.56
Deposit	12/01/2021				236.16	372.72
Deposit	12/02/2021				1,087.88	1,460.60
Deposit	12/05/2021				156.48	1,617.08
Deposit	12/09/2021				536.88	2,153.96
Deposit	12/10/2021				1,006.16	3,160.12
Deposit	12/12/2021				110.00	3,270.12
Deposit	12/12/2021				123.28	3,393.40
Deposit	12/12/2021				229.52	3,622.92
Paycheck	12/13/2021	DD1343	Dan L Casteel		0.00	3,622.92
Paycheck	12/13/2021	DD1345	Randy D Haddenbrook		0.00	3,622.92
Paycheck	12/13/2021	DD1344	Isaias R Villafana		0.00	3,622.92
Deposit	12/13/2021				279.47	3,902.39
Deposit	12/15/2021				121.00	4,023.39
Deposit	12/16/2021				113.70	4,137.09

Quail Valley Water District Reconciliation Detail

131003 · Union Bank, Period Ending 11/30/2021

Type	Date	Num	Name	Clr	Amount	Balance
Deposit	12/17/2021				169.76	4,306.85
Deposit	12/19/2021				293.13	4,599.98
Total Deposits and Credits						
Total New Transactions					4,599.98	4,599.98
Ending Balance					-5,052.41	-5,052.41
					-7,868.11	4,218.34

10:34 AM

01/18/22

Quail Valley Water District
Reconciliation Summary
131003 - Union Bank, Period Ending 11/30/2021

	Nov 30, 21
Beginning Balance	
Cleared Transactions	12,086.45
Checks and Payments - 38 items	-12,053.78
Deposits and Credits - 28 items	6,376.59
Total Cleared Transactions	-5,677.19
Cleared Balance	<u>6,409.26</u>
Uncleared Transactions	
Checks and Payments - 1 item	-6.93
Deposits and Credits - 2 items	2,868.42
Total Uncleared Transactions	2,861.49
Register Balance as of 11/30/2021	<u>9,270.75</u>
New Transactions	
Checks and Payments - 55 items	-25,533.46
Deposits and Credits - 38 items	25,120.53
Total New Transactions	-412.93
Ending Balance	<u>8,857.82</u>



STATEMENT OF ACCOUNTS

UNION BANK
STOCKDALE VILLAGE 0441
P.O. BOX 60368
PHOENIX AZ 85082-0368

Page 1 of 3
Statement Number: 2740026359
10/30/21 - 11/30/21

Telephone Banking
For 24-hour Automated Direct Service
800-238-4486
800-826-7345(TDD)
Representatives are available
Monday through Saturday

To open additional accounts,
or apply for loans, call your
banking office at 661-322-5035

You may also access your account online
at unionbank.com

Thank you for banking with us
since 2014

QUAIL VALLEY WATER DISTRICT
24750 SAND CANYON RD
TEHACHAPI CA 93561-8115

Business Essentials Checking Summary

Days in statement period: 32

Account Number: 2740026359

Balance on 10/30	\$		12,086.45
Additions			6,376.59
Subtractions			-12,053.78
		Checks	-1,666.84
		Payments	-10,268.30
		Other Withdrawals	-118.64
Balance on 11/30	\$		6,409.26
Statement Average Ledger Balance			10,612.49

We waived your service charge this statement period.

Additions

Date	Description/Location	Reference	Amount
11/1	INTUIT 67046255 DEPOSIT CCD 524771992259814		
11/1	INTUIT 71884945 DEPOSIT CCD 524771992259814	54486422	\$ 123.28 ✓
11/3	INTUIT 74821095 DEPOSIT CCD 524771992259814	54486964	242.80 ✓
11/5	INTUIT 03279065 DEPOSIT CCD 524771992259814	58023923	143.20 ✓
11/8	OFFICE DEPOSIT	50467921	1,282.40 ✓
11/8	INTUIT 06147245 DEPOSIT CCD 524771992259814	75021984	1,758.05 ✓
11/8	INTUIT 06063415 DEPOSIT CCD 524771992259814	51608701	110.00 ✓
11/9	INTUIT 21226385 DEPOSIT CCD 524771992259814	51925295	499.76 ✓
11/10	INTUIT 24384315 DEPOSIT CCD 524771992259814	53265151	226.84 ✓
11/12	INTUIT 36934865 DEPOSIT CCD 524771992259814	54639765	103.36 ✓
11/15	INTUIT 42735355 DEPOSIT CCD 524771992259814	56396350	136.56 ✓
11/22	INTUIT 87651965 DEPOSIT CCD 524771992259814	58233264	365.56 ✓
11/24	INTUIT 00766455 DEPOSIT CCD 524771992259814	54392193	229.52 ✓
11/26	USB AP PAYMENT AP PAYMENT PPD *****0216	57636950	389.02 ✓
11/26	INTUIT 08011595 DEPOSIT CCD 524771992259814	59175021	76.53 ✓
11/26	INTUIT 06539905 DEPOSIT CCD 524771992259814	59097492	136.56 ✓
11/29	INTUIT 11991605 DEPOSIT CCD 524771992259814	59097016	169.76 ✓
11/30	INTUIT 20617675 DEPOSIT CCD 524771992259814	50590193	242.80 ✓
Total		51785830	138.79 ✓
			\$ 6,376.59

Checks

Number	Date	Reference	Amount	Number	Date	Reference	Amount
8856	11/8	08269926	78.00 ✓	10750*	11/2	06065348	442.28 ✓

Checks

Number	Date	Reference	Amount	Number	Date	Reference	Amount
8857	11/3	07564092	130.00✓	10751	11/16	07528258	478.84✓
8859*	11/17	06763948	95.44✓	10753*	11/30	07558916	442.28✓
Total							\$ 1,565.84

* Checks missing in sequence. Out of sequence check numbers may also be located in the Payments section of your statement.

Payments online and electronic banking

Date	Description/Location	Reference	Amount
11/1	INTUIT 11985695 TRAN FEE CCD 54485412 524771992259814		\$ 4.61✓
11/1	INTUIT 16588505 TRAN FEE CCD 54485982 524771992259814		8.80✓
11/2	SO CAL EDISON CO DIRECTPAY CCD 55433941 700396743683		16.48✓
11/2	SO CAL EDISON CO DIRECTPAY CCD 55434015 700177696263		16.92✓
11/2	SO CAL EDISON CO DIRECTPAY CCD 55434016 700202464407		23.98✓
11/3	INTUIT 19755465 TRAN FEE CCD 58022377 524771992259814		3.00✓
11/3	SO CAL EDISON CO DIRECTPAY CCD 57348499 700297124986		40.07✓
11/5	INTUIT 50563275 TRAN FEE CCD 50469353 524771992259814		46.67✓
11/8	INTUIT 53255235 TRAN FEE CCD 51609837 524771992259814		3.00✓
11/8	INTUIT 53175475 TRAN FEE CCD 51926687 524771992259814		12.69✓
11/8	SO CAL EDISON CO DIRECTPAY CCD 51007080 700157682638		253.98✓
11/9	INTUIT 68120815 TRAN FEE CCD 53265439 524771992259814		8.53✓
11/10	INTUIT 71948105 TRAN FEE CCD 54641075 524771992259814		3.00✓
11/12	EMPLOYMENT DEVEL EDD EFTPMT CCD 55673704 61743904		2.59✓
11/12	INTUIT 84371665 TRAN FEE CCD 55397710 524771992259814		5.32✓
11/12	EMPLOYMENT DEVEL EDD EFTPMT CCD 55690468 1450951456		241.22✓
11/12	IRS USATAXPYMT CCD 225171363422252	55178680	1,723.24✓
11/12	INTUIT PAYROLL S QUICKBOOKS CCD 770328828	56296184	3,547.79✓
11/15	INTUIT 90218535 TRAN FEE CCD 58234458 524771992259814		13.70✓
11/18	STATE COMPENSATI ONLINE PMT CCD 51472303 UN1330586897POS		691.50✓
11/22	INTUIT 35559995 TRAN FEE CCD 54391223 524771992259814		3.00✓
11/24	INTUIT 48822645 TRAN FEE CCD 57631728 524771992259814		14.21✓
11/26	INTUIT 55950885 TRAN FEE CCD 59092443 524771992259814		5.08✓
11/26	INTUIT 54548415 TRAN FEE CCD 59098420 524771992259814		6.24✓
11/26	INTUIT PAYROLL S QUICKBOOKS CCD 770328828	59309075	3,232.53✓
11/29	1ST BANKCARD CTR ONLINE PMT CCD 50484214 CC0006786800		7.49✓

Payments online and electronic banking

<u>Date</u>	<u>Description/Location</u>	<u>Reference</u>	<u>Amount</u>
11/29	INTUIT 60742195 TRAN FEE CCD 524771992259814	50590799	8.80 ✓
11/29	INTUIT PYMT SOLN INTUITPMTS 524771992259814	CCD 50657995	154.92 ✓
11/29	INTUIT PYMT SOLN INTUITPMTS 524771992259814	CCD 50657994	154.92 ✓
11/30	INTUIT 68600985 TRAN FEE CCD 524771992259814	51766992	5.16 ✓
Total			\$ 10,253.30

Other Withdrawals including fees and adjustments

<u>Date</u>	<u>Description/Location</u>	<u>Reference</u>	<u>Amount</u>
11/2	DEPOSITED ITEM RETURNED	99300175	\$ 109.64 ✓
11/2	DEPOSITED ITEM RETURNED FEE(S)	99310355	9.00
Total			\$ 118.64 ✓

11:31 AM

11/03/21

Quail Valley Water District
Reconciliation Summary
131003 - Union Bank, Period Ending 10/29/2021

	<u>Oct 29, 21</u>
Beginning Balance	24,897.31
Cleared Transactions	
Checks and Payments - 41 items	-21,749.28
Deposits and Credits - 24 items	8,938.42
Total Cleared Transactions	<u>-12,810.86</u>
Cleared Balance	<u>12,086.45</u>
Uncleared Transactions	
Checks and Payments - 2 items	-208.00
Total Uncleared Transactions	<u>-208.00</u>
Register Balance as of 10/29/2021	<u>11,878.45</u>
New Transactions	
Checks and Payments - 7 items	-515.97
Deposits and Credits - 3 items	509.28
Total New Transactions	<u>-6.69</u>
Ending Balance	<u>11,871.76</u>



STATEMENT OF ACCOUNTS

UNION BANK
STOCKDALE VILLAGE 0441
P.O. BOX 60368
PHOENIX AZ 85082-0368

Page 1 of 2
Statement Number: 2740026359
10/01/21 - 10/29/21

Telephone Banking
For 24-hour Automated Direct Service
800-238-4486
800-826-7345(TDD)
Representatives are available
Monday through Saturday

To open additional accounts,
or apply for loans, call your
banking office at 661-322-5035

You may also access your account online
at unionbank.com

Thank you for banking with us
since 2014

QUAIL VALLEY WATER DISTRICT
24750 SAND CANYON RD
TEHACHAPI CA 93561-8115

Business Essentials Checking Summary

Days in statement period: 29

Account Number: 2740026359

Balance on 10/1	\$		24,897.31
Additions			8,938.42
Subtractions			-21,749.28
		Checks	-1,136.71
		Payments	-20,612.57
Balance on 10/29	\$		<u>12,086.45</u>

Statement Average Ledger Balance 18,809.14

We waived your service charge this statement period.

Additions

Date	Description/Location	Reference	Amount
10/1	INTUIT 05496645 DEPOSIT CCD 524771992259814	54975843	\$ 209.60 ✓
10/4	INTUIT 18620135 DEPOSIT CCD 524771992259814	56256334	129.92 ✓
10/5	INTUIT 31073785 DEPOSIT CCD 524771992259814	58431179	329.63 ✓
10/7	INTUIT 45078775 DEPOSIT CCD 524771992259814	51409078	149.84 ✓
10/8	INTUIT 51599995 DEPOSIT CCD 524771992259814	52645582	416.32 ✓
10/12	INTUIT 51957395 DEPOSIT CCD 524771992259814	54275180	726.40 ✓
10/12	INTUIT 59522785 DEPOSIT CCD 524771992259814	54311338	864.49 ✓
10/13	INTUIT 75323765 DEPOSIT CCD 524771992259814	56173908	667.78 ✓
10/14	INTUIT 81541465 DEPOSIT CCD 524771992259814	57676867	123.28 ✓
10/15	INTUIT 83841095 DEPOSIT CCD 524771992259814	59289543	433.29 ✓
10/18	INTUIT 98625035 DEPOSIT CCD 524771992259814	50470338	145.43 ✓
10/18	INTUIT 95007275 DEPOSIT CCD 524771992259814	50848838	169.76 ✓
10/21	INTUIT 15810655 DEPOSIT CCD 524771992259814	54693917	249.44 ✓
10/22	INTUIT 19422915 DEPOSIT CCD 524771992259814	55755384	216.24 ✓
10/27	INTUIT 48008295 DEPOSIT CCD 524771992259814	59925751	136.56 ✓
10/28	OFFICE DEPOSIT	76549050	1,871.88 ✓
10/28	OFFICE DEPOSIT	76549008	2,098.56 ✓
Total			<u>\$ 8,938.42</u>

Checks

Number	Date	Reference	Amount	Number	Date	Reference	Amount
8848	10/21	08250374	130.00 ✓	10748*	10/5	07529938	462.36 ✓
8850*	10/21	06807256	95.11 ✓	10749	10/19	08306142	442.28 ✓
8854*	10/21	08293156	6.96 ✓				

Checks

Number	Date	Reference	Amount	Number	Date	Reference	Amount
Total				\$ 1,136.71			

* Checks missing in sequence. Out of sequence check numbers may also be located in the Payments section of your statement.

Payments online and electronic banking

Date	Description/Location	Reference	Amount
10/1	INTUIT 47152915 TRAN FEE CCD 524771992259814	54977119	7.64 ✓
10/1	INTUIT PAYROLL S QUICKBOOKS CCD 770328828	55094383	2,869.92 ✓
10/4	INTUIT 61852595 TRAN FEE CCD 524771992259814	56257546	3.00 ✓
10/4	SO CAL EDISON CO DIRECTPAY CCD 55457412 700177696263		15.83 ✓
10/4	SO CAL EDISON CO DIRECTPAY CCD 55457437 700396743683		15.94 ✓
10/4	SO CAL EDISON CO DIRECTPAY CCD 55457413 700202464407		24.03 ✓
10/4	SO CAL EDISON CO DIRECTPAY CCD 55457414 700297124986		72.66 ✓
10/5	INTUIT 75146895 TRAN FEE CCD 524771992259814	58432595	12.14 ✓
10/6	SO CAL EDISON CO DIRECTPAY CCD 59018944 700157682638		365.29 ✓
10/7	INTUIT 89086785 TRAN FEE CCD 524771992259814	51410506	5.54 ✓
10/8	INTUIT 95640275 TRAN FEE CCD 524771992259814	52647032	15.47 ✓
10/12	INTUIT 03489635 TRAN FEE CCD 524771992259814	54334110	24.30 ✓
10/12	INTUIT 95977125 TRAN FEE CCD 524771992259814	54276546	26.32 ✓
10/12	IRS USATAXPYMT CCD 225168501152136	53088805	1,727.48 ✓
10/13	INTUIT 19670955 TRAN FEE CCD 524771992259814	56172630	24.28 ✓
10/14	INTUIT 25916435 TRAN FEE CCD 524771992259814	57675467	4.61 ✓
10/15	US BANK CORP ONLINE PMT CCD 59469582 UN1330586897POS		1,941.07 ✓
10/15	INTUIT 28068825 TRAN FEE CCD 524771992259814	59288285	15.77 ✓
10/15	INTUIT PAYROLL S QUICKBOOKS CCD 770328828	59445001	3,374.11 ✓
10/18	INTUIT 42269145 TRAN FEE CCD 524771992259814	50469314	5.39 ✓
10/18	INTUIT 39287075 TRAN FEE CCD 524771992259814	50847502	6.24 ✓
10/21	BSK ASSOCIATES ONLINE PMT CCD 54043826 UN1330586897POS		384.00 ✓
10/21	STATE COMP INS ONLINE PMT CCD 54045333 UN1330586897POS		691.50 ✓
10/21	MCMaster CARR SU ONLINE PMT CCD 54044763 UN1330586897POS		813.94 ✓
10/21	INTUIT 60331105 TRAN FEE CCD 524771992259814	54692254	9.03 ✓
10/22	BILL R WALKER CP ONLINE PMT CCD 55202532 UN1330586897POS		2,500.00 ✓
10/22	INTUIT 64083415 TRAN FEE CCD 524771992259814	55756618	3.00 ✓
10/25	EMPLOYMENT DEVEL EDD EFTPMT CCD 56670185 339516704		39.19 ✓
10/25	EMPLOYMENT DEVEL EDD EFTPMT CCD 56678097 1520999712		239.81 ✓
10/26	1ST BANKCARD CTR ONLINE PMT CCD 58625436 CC0006722791		7.49 ✓
10/27	INTUIT 93024135 TRAN FEE CCD 524771992259814	59927005	5.08 ✓
10/29	US BANK CORP ONLINE PMT CCD 53095979 UN1330586897POS		1,634.94 ✓
10/29	INTUIT PAYROLL S QUICKBOOKS CCD 770328828	53025800	3,727.56 ✓
Total			\$ 20,612.57



STATEMENT OF ACCOUNTS

UNION BANK
STOCKDALE VILLAGE 0441
P.O. BOX 60368
PHOENIX AZ 85082-0368

Page 1 of 1
Statement Number: 2740027029
10/01/21 - 10/29/21

Telephone Banking
For 24-hour Automated Direct Service
800-238-4486
800-826-7345(TDD)
Representatives are available
Monday through Saturday

To open additional accounts,
or apply for loans, call your
banking office at 661-322-5035

You may also access your account online
at unionbank.com

Thank you for banking with us
since 2014

QUAIL VALLEY WATER DISTRICT
PROP 84
24750 SAND CANYON RD
TEHACHAPI CA 93561-8115

Business Essentials Checking Summary

Days in statement period: 29

Account Number: 2740027029

Balance on 10/1	\$		92,111.47
Additions			0.00
Subtractions			-413.95
		Payments	-398.95
		Other Withdrawals	-15.00
Balance on 10/29	\$		<u>91,697.52</u>
Statement Average Ledger Balance			91,946.69

We waived your service charge this statement period.

Payments online and electronic banking

Date	Description/Location	Reference	Amount
10/19	COBANK ONLINE PMT WEB UN1330586897POS	51226502	\$ 398.95

Other Withdrawals including fees and adjustments

Date	Description/Location	Reference	Amount
10/4	WIRE TRANSFER MONTHLY FEE/WEB (WTM)	90251798	\$ 15.00

Quail Valley Water District

1/25/2022 9:58 AM

Register: 131000 · Cash:131002 · Cash-Kern County

From 10/01/2021 through 12/28/2021

Sorted by: Date, Type, Number/Ref

Date	Number	Payee	Account	Memo	Payment C	Deposit	Balance
10/29/2021			-split-	Deposit	X	731.90	11,392.87
11/30/2021			-split-	Deposit	X	2,227.83	13,620.70
12/28/2021			-split-	Deposit	X	18,603.48	32,224.18

11:38 AM

01/12/22

**Quail Valley Water District
Reconciliation Summary**
131002 - Cash-Kern County, Period Ending 12/28/2021

	<u>Dec 28, 21</u>
Beginning Balance	
Cleared Transactions	13,620.70
Deposits and Credits - 1 item	18,603.48
Total Cleared Transactions	<u>18,603.48</u>
Cleared Balance	<u>32,224.18</u>
Register Balance as of 12/28/2021	<u>32,224.18</u>
New Transactions	
Checks and Payments - 1 item	-10,000.00
Total New Transactions	<u>-10,000.00</u>
Ending Balance	<u><u>22,224.18</u></u>

**COUNTY OF KERN
MONTHLY CASH BALANCE**

As of Date: 12/28/2021

ACCOUNT	DESCRIPTION	DATE	DEBIT	CREDIT	BALANCE
60085	QUAIL VALLEY WATER DISTRICT	12/28/2021	\$32,224.18	\$0.00	\$32,224.18
			\$32,224.18	\$0.00	\$32,224.18

**COUNTY OF KERN
MONTHLY FUND REVENUE TRANSACTION REGISTER**

As of Date: 12/28/2021

**Fund: 60085 QUAIL VALLEY WATER DISTRICT
Dept: 0900 PROPERTY TAX DEPT-AUD CONTR
FINES, FORFEITURES & PENALTIES
3565 PENALTIES-REDEMPTIONS**

493450

DATE	CODE	DESCRIPTION	AMOUNT	AMOUNT	DESCRIPTION
12/07/21	3601	0037873	\$0.00	\$0.04	21/22 APN PSS IP COL @12/03/21
12/07/21	3601	0037867	\$0.00	\$1.21	21/22 APN PSS COLL @12/03/21
Account Total			\$0.00	\$1.25	
Category Total			\$0.00	\$1.25	

**INTERGOVERNMENTAL REVENUES
3945 STATE-AID HOMEOWNER PROP TX RL**

495200

12/07/21	3601	0037880	\$0.00	\$42.87	21/22 HO APPN @ 11/30/21
Account Total			\$0.00	\$42.87	
Category Total			\$0.00	\$42.87	

**REV FROM USE OF MONEY & PROP
3615 INTEREST FROM OTHER SOURCES**

492000

12/20/21	3602	0038765	\$0.00	(\$0.18)	APPN 12/17/21 SEC REF INT
12/07/21	3602	0037876	\$0.00	(\$0.09)	APPN 12/03/21 SEC REF INT
12/07/21	3602	0037877	\$0.00	(\$0.05)	APPN 12/03/21 SUPP REF INT
Account Total			\$0.00	(\$0.32)	
Category Total			\$0.00	(\$0.32)	

**TAXES
3005 PROPERTY TAXES-CURRENT SECURED**

493050

12/07/21	3602	0037854	\$0.00	(\$6.18)	21/22 PS RC REF @12/03/21
12/07/21	3602	0037844	\$0.00	(\$1.24)	21/22 APPN PS R/C @12/03/21
12/07/21	3601	0037852	\$0.00	\$0.05	21/22 CS RLWY UT1%COL@12/03/21
12/20/21	3601	0038759	\$0.00	\$0.17	21/22 APN CS RW1% @12/17/21
12/20/21	3601	0038761	\$0.00	\$5.65	21/22 CS RLWY UT1%COL@12/17/21
12/20/21	3601	0038738	\$0.00	\$9.05	APPN REF WM BOLTHOUSE FARMS IN
12/07/21	3601	0037850	\$0.00	\$37.55	21/22 CS UT1% COLL @12/03/21

DATE	CODE	ACCOUNT	AMOUNT	AMOUNT	DESCRIPTION
12/20/21	3601	0038757	\$0.00	\$620.12	21/22 CS UT1% COLL @12/17/21
12/07/21	3601	0037849	\$0.00	\$4,358.46	21/22 APPN CS COLL @12/03/21
12/20/21	3601	0038756	\$0.00	\$13,467.49	21/22 APPN CS COLL @12/17/21
Account Total			\$0.00	\$18,491.12	
3007 SUPPLEMENTAL PROP TAX-CURRENT					
493500					
12/07/21	3602	0037845	\$0.00	(\$3.86)	21/22 APPN CSS RFDS@12/03/21
12/07/21	3602	0037847	\$0.00	(\$0.03)	21/22 APPN CUS RFDS@12/03/21
12/07/21	3601	0037865	\$0.00	\$40.96	21/22 APN CSS COLL @12/03/21
Account Total			\$0.00	\$37.07	
3010 PROPERTY TAXES-CURRENT UNSEC					
493100					
12/07/21	3601	0037858	\$0.00	\$0.55	21/22 CU UT1% COLL @12/03/21
12/07/21	3601	0037857	\$0.00	\$23.23	21/22 APPN CU COLL @12/03/21
Account Total			\$0.00	\$23.78	
3014 PROP TAX-CURRENT UNSEC SUPPL					
493500					
12/07/21	3601	0037871	\$0.00	\$0.15	21/22 APN PUS COLL @12/03/21
12/07/21	3601	0037869	\$0.00	\$3.03	21/22 APN CUS COLL @12/03/21
Account Total			\$0.00	\$3.18	
3017 SUPPLEMENTAL PROP TAX-PRIOR					
493600					
12/07/21	3601	0037873	\$0.00	\$0.06	21/22 APN PSS IP COL @12/03/21
12/07/21	3601	0037867	\$0.00	\$3.02	21/22 APN PSS COLL @12/03/21
Account Total			\$0.00	\$3.08	
3025 PROPERTY TAXES-PRIOR UNSECURED					
493200					
12/07/21	3601	0037861	\$0.00	\$0.02	21/22 PU UT1% COLL @12/03/21
12/07/21	3601	0037860	\$0.00	\$1.43	21/22 APPN PU COLL @12/03/21
Account Total			\$0.00	\$1.45	
Category Total			\$0.00	\$18,559.68	
Department Total			\$0.00	\$18,603.48	
Fund Total			\$0.00	\$18,603.48	

10:33 AM

12/01/21

Quail Valley Water District
Reconciliation Summary
131002 - Cash-Kern County, Period Ending 11/30/2021

	<u>Nov 30, 21</u>
Beginning Balance	11,392.87
Cleared Transactions	
Deposits and Credits - 1 item	<u>2,227.83</u>
Total Cleared Transactions	<u>2,227.83</u>
Cleared Balance	13,620.70
Register Balance as of 11/30/2021	<u>13,620.70</u>
Ending Balance	13,620.70

COUNTY OF KERN
MONTHLY CASH BALANCE

As of Date: 11/30/2021

REVENUE	ACCOUNT	DATE	AMOUNT	DEBIT	CREDIT
60085	QUAIL VALLEY WATER DISTRICT	11/30/2021	\$13,620.70	\$0.00	\$13,620.70
			\$13,620.70	\$0.00	\$13,620.70

**COUNTY OF KERN
MONTHLY FUND REVENUE TRANSACTION REGISTER**

As of Date: 11/30/2021

Fund: 60085 QUAIL VALLEY WATER DISTRICT
Dept: 0900 PROPERTY TAX DEPT-AUD CONTR
FINES, FORFEITURES & PENALTIES
3565 PENALTIES-REDEMPTIONS

493450

11/18/21	3601	0036683	\$0.00	\$0.03	21/22 APN PSS IP COL @11/03/21
11/18/21	3601	0036689	\$0.00	\$5.59	21/22 APN PSS COLL @11/03/21
Account Total			\$0.00	\$5.62	
Category Total			\$0.00	\$5.62	

REV FROM USE OF MONEY & PROP
3615 INTEREST FROM OTHER SOURCES

492000

11/18/21	3602	0036679	\$0.00	(\$0.12)	APPN 11/03/21 SEC REF INT
11/18/21	3601	0036782	\$0.00	\$3.69	21/22 QTR INTEREST APPN 9/30
Account Total			\$0.00	\$3.57	
Category Total			\$0.00	\$3.57	

TAXES

3005 PROPERTY TAXES-CURRENT SECURED

493050

11/18/21	3602	0036705	\$0.00	(\$4.28)	21/22 APPN PS R/C @11/03/21
11/18/21	3602	0036710	\$0.00	(\$2.76)	21/22 PS RC REF @11/03/21
11/18/21	3601	0036732	\$0.00	\$0.03	TRUE-UP CS @11/03/21
11/18/21	3601	0036699	\$0.00	\$1.07	21/22 CS RLWY UT1%COL@11/03/21
11/18/21	3601	0036707	\$0.00	\$1.82	21/22 CS UT1% COLL @11/03/21
11/18/21	3601	0036761	\$0.00	\$35.99	TRUE-UP CS @10/03/21
11/18/21	3601	0036733	\$0.00	\$110.88	TRUE-UP CS @11/03/21
11/18/21	3601	0036706	\$0.00	\$1,687.89	21/22 APPN CS COLL @11/03/21
Account Total			\$0.00	\$1,830.64	

3007 SUPPLEMENTAL PROP TAX-CURRENT

493500

11/18/21	3602	0036704	\$0.00	(\$2.05)	21/22 APPN CSS RFDS@11/03/21
11/18/21	3602	0036735	\$0.00	(\$0.85)	TRUE-UP CSS RFDS @09/03/21
11/18/21	3602	0036642	\$0.00	(\$0.41)	TRUE-UP CSS RFDS @08/03/21

11/18/21	3602	0036748	\$0.00	(\$0.13)	TRUE-UP CSS RFDS @11/03/21
11/18/21	3602	0036737	\$0.00	(\$0.03)	TRUE-UP CSS RFDS @10/03/21
11/18/21	3602	0036701	\$0.00	(\$0.01)	21/22 APPN CUS RFDS@11/03/21
11/18/21	3601	0036750	\$0.00	\$1.93	TRUE-UP CSS @10/03/21
11/18/21	3601	0036758	\$0.00	\$2.07	TRUE-UP CSS @08/03/21
11/18/21	3601	0036745	\$0.00	\$4.19	TRUE-UP CSS @11/03/21
11/18/21	3601	0036753	\$0.00	\$11.17	TRUE-UP CSS @09/03/21
11/18/21	3601	0036690	\$0.00	\$63.80	21/22 APN CSS COLL @11/03/21
Account Total			\$0.00	\$79.60	

3010 PROPERTY TAXES-CURRENT UNSEC

493100

11/18/21	3601	0036736	\$0.00	\$0.06	TRUE-UP CU UT1% @08/03/21
11/18/21	3601	0036746	\$0.00	\$0.15	TRUE-UP CU RW1% @09/03/21
11/18/21	3601	0036739	\$0.00	\$0.21	TRUE-UP CU UT1% @09/03/21
11/18/21	3601	0036696	\$0.00	\$1.10	21/22 CU UT1% COLL @11/03/21
11/18/21	3601	0036759	\$0.00	\$2.46	TRUE-UP CU @11/03/21
11/18/21	3601	0036743	\$0.00	\$12.38	TRUE-UP CU @10/03/21
11/18/21	3601	0036747	\$0.00	\$30.59	TRUE-UP CU @03/03/21
11/18/21	3601	0036709	\$0.00	\$37.49	21/22 APPN CU COLL @11/03/21
11/18/21	3601	0036751	\$0.00	\$197.80	TRUE-UP CU @09/03/21
Account Total			\$0.00	\$282.30	

3014 PROP TAX-CURRENT UNSEC SUPPL

40,3500

11/18/21	3602	0036700	\$0.00	(\$0.22)	21/22 APN PUS COLL @10/03/21
11/18/21	3602	0036740	\$0.00	(\$0.04)	TRUE-UP CUS RFDS @08/03/21
11/18/21	3602	0036760	\$0.00	(\$0.03)	TRUE-UP CUS RFDS @09/03/21
11/18/21	3601	0036744	\$0.00	\$0.03	TRUE-UP CUS @11/03/21
11/18/21	3601	0036685	\$0.00	\$0.05	21/22 APN PUS COLL @11/03/21
11/18/21	3601	0036742	\$0.00	\$0.07	TRUE-UP CUS @09/03/21
11/18/21	3601	0036762	\$0.00	\$0.05	TRUE-UP CUS @10/03/21
11/18/21	3601	0036688	\$0.00	\$0.40	21/22 APN CUS COLL @11/03/21

11/18/21 3601

0036643

\$0.00

\$0.49

TRUE-UP CUS @08/03/21

Account Total

\$0.00

\$1.22

3017 SUPPLEMENTAL PROP TAX-PRIOR

493600

11/18/21 3601

0036683

\$0.00

\$0.15

21/22 APN PSS IP COLL @11/03/21

11/18/21 3601

0036689

\$0.00

\$17.89

21/22 APN PSS COLL @11/03/21

Account Total

\$0.00

\$18.04

3025 PROPERTY TAXES-PRIOR UNSECURED

493200

11/18/21 3601

0036693

\$0.00

\$6.88

21/22 APN PSS COLL @11/03/21

Account Total

\$0.00

\$6.88

Category Total

\$0.00

\$2,218.64

Department Total

\$0.00

\$2,227.83

Fund Total

\$0.00

\$2,227.83

11:48 AM

11/03/21

Quail Valley Water District
Reconciliation Summary
131002 - Cash-Kern County, Period Ending 10/29/2021

	<u>Oct 29, 21</u>
Beginning Balance	10,660.97
Cleared Transactions	
Deposits and Credits - 1 item	<u>731.90</u>
Total Cleared Transactions	<u>731.90</u>
Cleared Balance	<u>11,392.87</u>
Register Balance as of 10/29/2021	<u>11,392.87</u>
Ending Balance	11,392.87

**COUNTY OF KERN
MONTHLY CASH BALANCE**

As of Date: 10/29/2021

AGENCY	DATE	AMOUNT	CURRENT BALANCE	PREVIOUS BALANCE
60085 QUAIL VALLEY WATER DISTRICT	10/29/2021	\$11,392.87	\$0.00	\$11,392.87
		\$11,392.87	\$0.00	\$11,392.87

**COUNTY OF KERN
MONTHLY FUND REVENUE TRANSACTION REGISTER**

As of Date: 10/29/2021

Fund: 60085 QUAIL VALLEY WATER DISTRICT
Dept: 0900 PROPERTY TAX DEPT-AUD CONTR
FINES, FORFEITURES & PENALTIES
3565 PENALTIES-REDEMPTIONS

493450

10/12/21	3601	0034032	\$0.00	\$0.09	21/22 APN PSS IP COL @10/03/21
10/12/21	3601	0034027	\$0.00	\$1.62	21/22 APN PSS COLL @10/03/21
Account Total			\$0.00	\$1.71	
Category Total			\$0.00	\$1.71	

REV FROM USE OF MONEY & PROP
3605 INTEREST ON BANK DEP & INVEST

492000

10/26/21	3601	35028	\$0.00	\$24.12	INTEREST ON BANK DEP & INVEST
Account Total			\$0.00	\$24.12	

3615 INTEREST FROM OTHER SOURCES

492000

10/12/21	3602	0034036	\$0.00	(\$0.13)	APPN 10/03/21 SEC REF INT
Account Total			\$0.00	(\$0.13)	
Category Total			\$0.00	\$23.99	

TAXES

3005 PROPERTY TAXES-CURRENT SECURED

493050

10/12/21	3602	0034014	\$0.00	(\$28.58)	21/22 PS RC REF @10/03/21
10/12/21	3602	0034009	\$0.00	(\$0.10)	21/22 APPN PS R/C @10/03/21
10/12/21	3601	0034013	\$0.00	\$511.93	21/22 APPN CS COLL @10/03/21
Account Total			\$0.00	\$483.25	

3007 SUPPLEMENTAL PROP TAX-CURRENT

493500

10/12/21	3602	0034010	\$0.00	(\$0.46)	21/22 APPN CSS RFDS@10/03/21
10/12/21	3601	0034025	\$0.00	\$27.40	21/22 APN CSS COLL @10/03/21
Account Total			\$0.00	\$26.94	

3010 PROPERTY TAXES-CURRENT UNSEC

493100

10/12/21	3601	0034018	\$0.00	\$0.03	21/22 CU UT1% COLL @10/03/21
----------	------	---------	--------	--------	------------------------------

DATE	ACCT	DOC	APPROVAL	AMOUNT	TAX	DESCRIPTION
10/12/21	3601		0034020	\$0.00	\$1.55	21/22 APN CU RW1% @10/03/21
10/12/21	3601		0034017	\$0.00	\$176.02	21/22 APPN CU COLL @10/03/21

3014 PROP TAX-CURRENT UNSEC SUPPL

10/12/21	3601		0034029	\$0.00	\$6.18	21/22 APN CUS COLL @10/03/21
----------	------	--	---------	--------	--------	------------------------------

493500

3017 SUPPLEMENTAL PROP TAX-PRIOR

10/12/21	3601		0034032	\$0.00	\$0.14	21/22 APN PSS IP COL @10/03/21
----------	------	--	---------	--------	--------	--------------------------------

493600

10/12/21	3601		0034027	\$0.00	\$4.62	21/22 APN PSS COLL @10/03/21
----------	------	--	---------	--------	--------	------------------------------

3025 PROPERTY TAXES-PRIOR UNSECURED

10/12/21	3601		0034022	\$0.00	\$7.47	21/22 APPN PU COLL @10/03/21
----------	------	--	---------	--------	--------	------------------------------

493200

Account Total	\$0.00	\$4.76
Category Total	\$0.00	\$706.20
Department Total	\$0.00	\$731.90
Fund Total	\$0.00	\$731.90

Quail Valley Water District

1/20/2022 9:31 AM

Register: 222100 · Acc Payable - Visa Cards

From 06/01/2021 through 12/31/2021

Sorted by: Date, Type, Number/Ref

Date	Ref.	Payee	Account	Memo	Charge	C	Payment	Balance
06/09/2021	2020334...	Ionos	500000 · Operating Ex...	Email Archiving	4.50	X		4.50
06/17/2021	2020339...	Ionos	500000 · Operating Ex...	Email Storage	2.99	X		7.49
06/30/2021		Union Bank - Visa	222000 · Accounts Pay...			X	7.49	0.00
07/11/2021	2020337...	Ionos	500000 · Operating Ex...	Email Archiving	4.50	X		4.50
07/19/2021		Ionos	500000 · Operating Ex...		2.99	X		7.49
07/30/2021		Union Bank - Visa	222000 · Accounts Pay...			X	7.49	0.00
08/09/2021	2020342...	Ionos	500000 · Operating Ex...	Email Archiving	4.50	X		4.50
08/15/2021	2020343...	Ionos	500000 · Operating Ex...	Email Storage	2.99	X		7.49
08/31/2021		Union Bank - Visa	222000 · Accounts Pay...			X	7.49	0.00
09/09/2021	2020346...	Ionos	500000 · Operating Ex...	Email Archiving	4.50	X		4.50
09/15/2021	2020347...	Ionos	500000 · Operating Ex...	Email Storage	2.99	X		7.49
09/30/2021		Union Bank - Visa	222000 · Accounts Pay...			X	7.49	0.00
10/10/2021	2020351...	Ionos	500000 · Operating Ex...	Email Archiving	4.50	X		4.50
10/16/2021	2020352...	Ionos	500000 · Operating Ex...	Email Storage	2.99	X		7.49
10/29/2021		Union Bank - Visa	222000 · Accounts Pay...			X	7.49	0.00
11/09/2021	2020355...	Ionos	500000 · Operating Ex...	Email Archiving	4.50	X		4.50
11/15/2021	2020356...	Ionos	500000 · Operating Ex...	Email Storage	2.99	X		7.49
12/09/2021	2020360...	Ionos	500000 · Operating Ex...	Email Archiving	4.50	X		11.99
12/15/2021	2020360...	Ionos	-split-	Email Storage, ...	187.33	X		199.32
12/25/2021		Union Bank - Visa	222000 · Accounts Pay...			X	7.49	191.83

Quail Valley Water District
Reconciliation Summary
222100 - Acc Payable - Visa Cards, Period Ending 12/31/2021

	<u>Dec 31, 21</u>
Beginning Balance	
Cleared Transactions	7.49
Charges and Cash Advances - 2 items	-191.83
Payments and Credits - 1 item	7.49
Total Cleared Transactions	<u>-184.34</u>
Cleared Balance	<u>191.83</u>
Register Balance as of 12/31/2021	191.83
New Transactions	
Payments and Credits - 1 item	191.83
Total New Transactions	<u>191.83</u>
Ending Balance	<u><u>0.00</u></u>



Account Number: 4031 5291 0738 3542

New Balance: \$0.00

Minimum Payment Due: \$0.00

Payment Due Date: January 25, 2022

Make checks payable to First National Bank of Omaha

Amount of Payment Enclosed

\$

Change of Address? If yes, please complete reverse side.

2253/0 026340

QUAIL VALLEY WD
RANDY HARDENBROOK
24750 SAND CANYON RD
TEHACHAPI CA 93561-8115

First National Bank of Omaha
P.O. Box 2818
Omaha, NE 68103-2818

4031529107383542 000000000000 000000000000

PLEASE DETACH HERE AND RETURN TOP PORTION WITH YOUR PAYMENT

Union Bank VOX® Business Visa®

Account Number:
4031 5291 0738 3542
Page 001 of 001



Account Summary

Previous Balance \$0.00
 Payments -\$0.00
 Other Credits -\$0.00
 Purchases +\$191.83
 Balance Transfers +\$0.00
 Cash Advances +\$0.00
 Fees Charged +\$0.00
 Interest Charged +\$0.00
New Balance \$0.00

Statement Closing Date 12/31/21
 Days in Billing Cycle 31

Total Credit Limit \$10,000.00
 Available Credit \$10,000.00
 Cash Limit \$0.00
 Available Cash \$0.00



Payment Information

New Balance \$0.00
 Minimum Payment Due \$0.00
 Past Due Amount \$0.00
 Payment Due Date January 25, 2022

Manage your business expenses with convenient online access.



- Make secure online payments
- Access current and historical statements, up to 7 years old
- Monitor monthly expenses

Log in today to explore all the online possibilities!



Customer Service

Save Time and Stamps
by Paying Online!

Call: Toll Free 1-800-819-4249

(TDD Telecommunication Device for the Deaf: 1-800-925-2833)

Visit: www.c.r.d.fnbo.com

Remit to: First National Bank of Omaha, P.O. Box 2818, Omaha, NE 68103-2818

Important Information Regarding Your Account

This is a zero balance statement for your information only. No payment is required.



Transaction Detail

Trans Date	Post Date	Reference Number	Transaction Description	Credits (CR) and Debits
12-11	12-14	240552213460475239123927	WWW.1AND1.COM CHESTERBROOK PA	\$4.50
12-17	12-21	240552213520475260821117	WWW.1AND1.COM CHESTERBROOK PA	\$167.33

Your Annual Percentage Rate (APR) is the annual interest rate on your account. (v) Variable Rate (f) Fixed Rate

Charge Summary	Annual Percentage Rate (APR)	Special Offer or Eligible Purchase APR Expiration Date	Balance Subject to Interest Rate	Days Used	Rate Interest Charge
Purchases	12.99% (v)	N/A	\$0.00	31	\$0.00
Cash Advance	25.24% (v)	N/A	\$0.00	31	\$0.00

2021 Total Year-to-Date

Total fees charged in 2021 \$0.00
 Total interest charged in 2021 \$0.00

Additional Information Regarding Your Account

SERVICEMEMBERS CIVIL RELIEF ACT (SCRA)

If you are an active duty member of the United States Military, you may be eligible for additional benefits on your account(s) under the Servicemembers Civil Relief Act (SCRA).

For additional information regarding SCRA benefits, please call 855-868-8446 or log in to the website listed on the front of your statement and click 'Resources' for more information.



Account Number: 4031 5299 5526 9769
 New Balance: \$191.83
 Minimum Payment Due: \$47.95
 Payment Due Date: January 25, 2022

2253 024344
 QUAIL VALLEY WD
 BILLING ACCOUNT
 ATTN: RANDY CANTRELL
 24750 SAND CANYON RD
 TEHACHAPI CA 93561-8115

First National Bank of Omaha
 P.O. Box 2818
 Omaha, NE 68103-2818

Make checks payable to First National Bank of Omaha
 Amount of Payment Enclosed

\$

Change of Address? If yes, please complete reverse side.

4031529955269769 0000000004795 0000000019183

PLEASE DETACH HERE AND RETURN TOP PORTION WITH YOUR PAYMENT

Union Bank VOX® Business Visa®



Account Summary

Previous Balance \$7.49
 Payments -\$7.49
 Other Credits -\$0.00
 Purchases +\$191.83
 Balance Transfers +\$0.00
 Cash Advances +\$0.00
 Fees Charged +\$0.00
 Interest Charged +\$0.00
 New Balance \$191.83
 Statement Closing Date 12/31/21
 Days in Billing Cycle 31



Payment Information

New Balance \$191.83
 Minimum Payment Due \$47.95
 Past Due Amount \$0.00
 Payment Due Date January 25, 2022

Account Number:
 4031 5299 5526 9769
 Page 001 of 001

Manage your business expenses with convenient online access.

- Make secure online payments
- Access current and historical statements, up to 7 years old
- Monitor monthly expenses

Login today to explore all the online possibilities!



Customer Service

Save Time and Stamps
 by Paying Online!

Call: Toll Free 1-800-819-4249

(TDD Telecommunications Device for the Deaf: 1-800-925-2833)

Visit: www.card.fnbo.com

Remit to: First National Bank of Omaha, P.O. Box 2818, Omaha, NE 68103-2818



Transaction Detail

Trans Date	Post Date	Reference Number	Transaction Description	Credits (CR) and Debits
12-25	12-27	74418901361007391025935	ONLINE PAYMENT THANK YOU	\$7.49 (CR)
RANDY HARDENBROOK				
				Net Balance \$191.83

Your Annual Percentage Rate (APR) is the annual interest rate on your account.

Charge Summary	Annual Percentage Rate (APR)	Special Offer or Eligible Purchase APR Expiration Date	Balance Subject to Interest Rate	Days Rate Used	(v) Variable Rate Interest Charge	(f) Fixed Rate Interest Charge
Purchases	12.99% (v)	N/A	\$89.75	31	\$0.00	
Cash Advance	25.24% (v)	4/1A	\$0.00	31	\$0.00	

2021 Total Year-to-Date

Total fees charged in 2021 \$0.00
 Total interest charged in 2021 \$0.00

Additional Information Regarding Your Account

SERVICEMEMBERS CIVIL RELIEF ACT (SCRA)

If you are an active duty member of the United States Military, you may be eligible for additional benefits on your account(s) under the Servicemembers Civil Relief Act (SCRA).

For additional information regarding SCRA benefits, please call 855-868-8446 or log in to the website listed on the front of your statement and click 'Resources' for more information.

Quail Valley Water District

1/25/2022 10:00 AM

Register: 222200 · Acc Payable - Cal Cards

From 09/21/2021 through 12/19/2021

Sorted by: Date, Type, Number/Ref

Date	Ref.	Payee	Account	Memo	Charge	C	Payment	Balance
09/23/2021	1907641...	Ebay	-split-	Cap, Vinyl, Cl...	32.16	X		32.16
09/24/2021		Ebay	500000 · Operating Ex...	Electrical Encl...	119.30	X		151.46
09/26/2021	2007651...	Ebay	-split-	Dewalt 18V X...	64.34	X		215.80
09/28/2021	40134	Leslie's Pool Supplies	-split-	Chlorine	57.73	X		273.53
09/29/2021	1248828	Fresh Water Systems	-split-		118.32	X		391.85
09/30/2021		Hughes Net	500000 · Operating Ex...	Monthly Internet	115.22	X		507.07
09/30/2021		Ebay	500000 · Operating Ex...	Credit for Elcct...		X	119.30	387.77
10/01/2021		Kern Data	500000 · Operating Ex...	Monthly Subsc...	40.00	X		427.77
10/04/2021	86388831	LOWES	-split-	Circuit Breaker...	72.65	X		500.42
10/06/2021		Gas On	500000 · Operating Ex...	Fuel Trailer	202.21	X		702.63
10/06/2021		Gas On	500000 · Operating Ex...	Gas Cans	24.22	X		726.85
10/07/2021	0907703...	Ebay	-split-	12V Electric W...	32.16	X		759.01
10/12/2021	E0500G9...	Microsoft	500000 · Operating Ex...	Officer 365 10/...	8.25	X		767.26
10/13/2021		Aramark Uniform	500000 · Operating Ex...	Employee Wor...	627.68	X		1,394.94
10/13/2021	P1-66737...	Intuit	660000 · Payroll Expe...	Payroll Charges	6.00	X		1,400.94
10/14/2021	740104	USPS	-split-	4 Rolls Postage...	234.00	X		1,634.94
10/20/2021		Kern River Propane	500000 · Operating Ex...		771.37	X		2,406.31
10/20/2021		U. S. Bank - Cal Card	222000 · Accounts Pay...			X	1,634.94	771.37
10/22/2021	WFN200...	WATERFILTERS.N...	12100 · Inventory Asset		225.76	X		997.13
10/22/2021	1907763...	Ebay	-split-	1 - LaMotte P...	35.56	X		1,032.69
10/23/2021		Walmart	-split-		11.57	X		1,044.26
10/23/2021	26025892	LOWES	-split-		80.04	X		1,124.30
10/26/2021	IN05304...	US Water Systems, I...	-split-		134.81	X		1,259.11
10/26/2021	180921809	Kern County Waste ...	500000 · Operating Ex...	Dump Fees	32.70	X		1,291.81
10/27/2021		The Tire Store	500000 · Operating Ex...	1 Backhoc tire	210.00	X		1,501.81
10/28/2021	1107791...	Ebay	-split-	Battery for port...	42.89	X		1,544.70
11/01/2021		Hughes Net	500000 · Operating Ex...	Monthly Internet	115.22	X		1,659.92
11/01/2021		Kern Data	500000 · Operating Ex...	Monthly Subsc...	40.00	X		1,699.92
11/03/2021	0807817...	Ebay	-split-	HOA SWITCH...	16.54	X		1,716.46
11/06/2021		Home Depot	-split-	Office Repairs	118.25	X		1,834.71
11/07/2021		Home Depot	-split-	Office Repairs	257.66	X		2,092.37
11/07/2021	E0500GL...	Microsoft	500000 · Operating Ex...	Office 365, 10/...	8.25	X		2,100.62
11/11/2021		Home Depot	-split-	Office Repairs	108.30	X		2,208.92
11/13/2021	P1-67244...	Intuit	660000 · Payroll Expe...	Payroll Charges	6.00	X		2,214.92
11/15/2021		Kern River Propane	500000 · Operating Ex...		427.78	X		2,642.70
11/18/2021	1107885...	Ebay	-split-	5 LOOPS New ...	68.09	X		2,710.79
11/22/2021	52350	Leslie's Pool Supplies	-split-		57.73	X		2,768.52
11/22/2021		U. S. Bank - Cal Card	222000 · Accounts Pay...			X	2,359.79	408.73
11/22/2021		U. S. Bank - Cal Card	222000 · Accounts Pay...			X	351.00	57.73
11/30/2021		The Tire Store	500000 · Operating Ex...		240.00	X		297.73

Quail Valley Water District

1/25/2022 10:00 AM

Register: 222200 · Acc Payable - Cal Cards

From 09/21/2021 through 12/19/2021

Sorted by: Date, Type, Number/Ref

Date	Ref.	Payee	Account	Memo	Charge	C	Payment	Balance
11/30/2021		Hughes Net	500000 · Operating Ex...					
11/30/2021	9894	Gas On	500000 · Operating Ex...		115.22	X		412.95
11/30/2021	9902	Gas On	500000 · Operating Ex...		230.51	X		643.46
11/30/2021	4447-495...	O'Reilly Auto Parts	-split-		19.64	X		663.10
11/30/2021		U. S. Bank - Cal Card	222000 · Accounts Pay...		34.30	X		697.40
12/01/2021		Kern Data	500000 · Operating Ex...				975.77	-278.37
12/03/2021		Walmart	-split-		40.00	X		-238.37
12/07/2021		Ebay	-split-	Water Filters	129.73	X		-108.64
12/12/2021		Microsoft	500000 · Operating Ex...	Toner	85.69	X		-22.95
12/13/2021		Intuit	660000 · Payroll Expe...		8.25	X		-14.70
12/15/2021	237719	Kern River Propane	500000 · Operating Ex...	Propane-Office	6.00	X		-8.70
12/16/2021		USPS	50000 · Cost of Goods ...	Mail Claim 43	284.57			275.87
					8.70	X		284.57

Quail Valley Water District
Reconciliation Summary
222200 - Acc Payable - Cal Cards, Period Ending 12/20/2021

	<u>Dec 20, 21</u>
Beginning Balance	2,710.79
Cleared Transactions	
Charges and Cash Advances - 12 items	-975.77
Payments and Credits - 2 items	2,710.79
Total Cleared Transactions	<u>1,735.02</u>
Cleared Balance	<u>975.77</u>
Uncleared Transactions	
Charges and Cash Advances - 1 item	-284.57
Payments and Credits - 1 item	975.77
Total Uncleared Transactions	<u>691.20</u>
Register Balance as of 12/20/2021	<u>284.57</u>
New Transactions	
Charges and Cash Advances - 4 items	-376.86
Total New Transactions	<u>-376.86</u>
Ending Balance	<u>661.43</u>

P.O. BOX 6343
FARGO ND 58125-6343



ACCOUNT NUMBER 4246 0445 5573 8586
STATEMENT DATE 12-20-2021
AMOUNT DUE \$975.77
NEW BALANCE \$975.77
PAYMENT DUE ON RECEIPT \$975.77

000000034 01 SP 0.530 106481434591434 P
QUAIL VALLEY WATER DIST
ATTN RICHARD CANTRELL
24750 SAND CANYON ROAD
TEHACHAPI CA 93561-8115

AMOUNT ENCLOSED
\$
Please make check payable to "U.S. Bank"

1/13/22 Pd/Rec. 1/14/22
Conf. # SB27B-DD7RL

U.S. BANK CORPORATE PAYMENT SYSTEMS
P.O. BOX 790428
ST. LOUIS, MO 63179-0428

4246044555738586 000097577 000097577

Please tear payment coupon at perforation.

CORPORATE ACCOUNT SUMMARY									
QUAIL VALLEY WATER D 4246 0445 5573 8586	Previous Balance	Purchases And Other + Charges	Cash Advances +	Cash Advance Fees +	Late Payment Charges +	- Credits	- Payments	New Balance	
Company Total	\$2,710.79	\$975.77	\$0.00	\$0.00	\$0.00	\$0.00	\$2,710.79	\$975.77	

CORPORATE ACCOUNT ACTIVITY					TOTAL CORPORATE ACTIVITY
Post Date	Tran Date	Reference Number	Transaction Description	Amount	\$2,710.79CR
12-16	12-16	7479826135000000000146	PAYMENT - QUAIL VALLEY WA00000 A	2,710.79 PY	

NEW ACTIVITY							
Post Date	Tran Date	Reference Number	Transaction Description	Amount			
11-23	11-22	24692161327100336804569	LESLIES POOL SPLY PALMDALE CA	57.73			
12-01	11-30	24377351335000003252317	THE TIRE STORE TEHACHAPI CA	240.00			
12-01	11-30	24431051335838001488684	O'REILLY AUTO PARTS 4447 TEHACHAPI CA	34.30			
12-01	11-30	24692161334100324588969	HNS*HUGHESNET.COM 866-347-3292 MD	115.22			
12-01	11-30	24801971334207251900578	GAS ON TEHACHAPI CA	230.51			
RANDY HARDENBROOK 4246-0402-8026-4344				CREDITS \$0.00	PURCHASES \$975.77	CASH ADV \$0.00	TOTAL ACTIVITY \$975.77

CUSTOMER SERVICE CALL 800-344-5696	ACCOUNT NUMBER 4246-0445-5573-8586		ACCOUNT SUMMARY	
	STATEMENT DATE 12/20/21	DISPUTED AMOUNT .00	PREVIOUS BALANCE PURCHASES & OTHER CHARGES	2,710.79 975.77
SEND BILLING INQUIRIES TO: U.S. Bank National Association C/O U.S. Bancorp Purchasing Card Program P.O. Box 6335 Fargo, ND 58125-6335		AMOUNT DUE		
		975.77		
		CASH ADVANCES	.00	
		CASH ADVANCE FEES	.00	
		LATE PAYMENT CHARGES	.00	
		CREDITS	.00	
		PAYMENTS	2,710.79	
		ACCOUNT BALANCE	975.77	



Company Name: QUAIL VALLEY WATER DIST
Corporate Account Number: 4246 0445 5573 8586
Statement Date: 12-20-2021

NEW ACTIVITY				
Post Date	Tran Date	Reference Number	Transaction Description	Amount
12-01	11-30	24801971334207251900602	GAS ON TEHACHAPI CA	19.64
12-02	12-01	24275391335900018612919	KERN DATA 888-8717205 CA	40.00
12-06	12-03	24055231337083306569307	WALMART.COM AA 800-966-6546 AR	129.73
12-08	12-07	24204291341007585064944	EBAY O*22-07973-00005 408-3766151 CA	85.69
12-13	12-12	24430991346400815096586	MSFT * E0500GYAUK 800-642-7676 WA	8.25
12-14	12-13	24692161347100794982663	INTUIT *PAYROLLEE USAG 833-830-9255 CA	6.00
12-17	12-16	24137461351600243290410	USPS.COM CLICKNSHIP 800-344-7779 DC	8.70

Department: 00000 Total: \$975.77
 Division: 00000 Total: \$975.77

Quail Valley Water District Reconciliation Summary

222200 - Acc Payable - Cal Cards, Period Ending 11/22/2021

	Nov 22, 21
Beginning Balance	1,634.94
Cleared Transactions	
Charges and Cash Advances - 19 items	-2,710.79
Payments and Credits - 1 item	1,634.94
Total Cleared Transactions	-1,075.85
Cleared Balance	2,710.79
Uncleared Transactions	
Charges and Cash Advances - 6 items	-477.15
Payments and Credits - 1 item	2,710.79
Total Uncleared Transactions	2,233.64
Register Balance as of 11/22/2021	477.15
New Transactions	
Charges and Cash Advances - 4 items	-519.01
Total New Transactions	-519.01
Ending Balance	996.16

P.O. BOX 6343
FARGO ND 58125-6343



ACCOUNT NUMBER 4246 0445 5573 8586
STATEMENT DATE 11-22-2021
AMOUNT DUE \$2,710.79
NEW BALANCE \$2,710.79
PAYMENT DUE ON RECEIPT

000000413 01 SP 0.530 106481421722429 P
QUAIL VALLEY WATER DIST
ATTN RICHARD CANTRELL
24750 SAND CANYON ROAD
TEHACHAPI CA 93561-8115

AMOUNT ENCLOSED
\$

Please make check payable to "U.S. Bank"

U.S. BANK CORPORATE PAYMENT SYSTEMS
P.O. BOX 790428
ST. LOUIS, MO 63179-0428

4246044555738586 000271079 000271079

Please tear payment coupon at perforation.

CORPORATE ACCOUNT SUMMARY									
QUAIL VALLEY WATER D 4246 0445 5573 8586	Previous Balance	Purchases And Other + Charges	Cash Advances +	Cash Advance Fees +	Late Payment Charges	- Credits	- Payments	New Balance	
Company Total	\$1,634.94	\$2,710.79	\$0.00	\$0.00	\$0.00	\$0.00	\$1,634.94	\$2,710.79	

CORPORATE ACCOUNT ACTIVITY					
QUAIL VALLEY WATER DIST 4246-0445-5573-8586					TOTAL CORPORATE ACTIVITY \$1,634.94 CR
Post Date	Tran Date	Reference Number	Transaction Description		Amount
10-29	10-29	74798261302000000000160	PAYMENT - QUAIL VALLEY WA00000 A		1,634.94 PY

NEW ACTIVITY					
DAN CASTEEL 4246-0401-8026-5847		CREDITS \$0.00	PURCHASES \$351.00	CASH ADV \$0.00	TOTAL ACTIVITY \$351.00
Post Date	Tran Date	Reference Number	Transaction Description		Amount
10-28	10-26	24245501300900014452734	COUNTY OF KERN PUBLIC WOR 661-8628900 CA		32.70 ✓
10-28	10-27	24377351301000003349535	THE TIRE STORE TEHACHAPI CA		210.00 ✓
11-15	11-11	24943011316010180448446	THE HOME DEPOT #6835 TEHACHAPI CA		108.30 ✓

CUSTOMER SERVICE CALL 800-344-5696	ACCOUNT NUMBER 4246-0445-5573-8586		ACCOUNT SUMMARY	
	STATEMENT DATE 11/22/21	DISPUTED AMOUNT .00	PREVIOUS BALANCE	1,634.94
SEND BILLING INQUIRIES TO: U.S. Bank National Association C/O U.S. Bancorp Purchasing Card Program P.O. Box 6335 Fargo, ND 58125-6335		PURCHASES & OTHER CHARGES	2,710.79	
		CASH ADVANCES	.00	
AMOUNT DUE 2,710.79		CASH ADVANCE FEES	.00	
		LATE PAYMENT CHARGES	.00	
		CREDITS	.00	
		PAYMENTS	1,634.94	
		ACCOUNT BALANCE	2,710.79	



Company Name: QUAIL VALLEY WATER DIST
 Corporate Account Number: 4246 0445 5573 8586
 Statement Date: 11-22-2021

NEW ACTIVITY

RANDY HARDENBROOK
 4246-0402-8026-4344

CREDITS
 \$0.00

PURCHASES
 \$2,359.79

CASH ADV
 \$0.00

TOTAL ACTIVITY
 \$2,359.79

Post Date	Tran Date	Reference Number	Transaction Description	Amount
10-25	10-22	24121571296310319717872	WATERFILTERS.NET 888-8017873 MN	
10-25	10-22	24204291295004368945858	EBAY O*19-07763-57971 408-3766151 CA	112.88✓
10-25	10-21	24207851295168100675038	KERN RIVER PROPANE 760-3796259 CA	35.56✓
10-25	10-23	24445001297400161062356	WAL-MART #2636 HUNTINGTON BE CA	771.37✓
10-25	10-22	24492151295852014203206	USWATERSYS 800-608-8792 IN	11.57✓
10-25	10-23	24692161297100977837841	LOWES #01753* HUNTINGTON BE CA	134.81✓
10-29	10-28	24204291301274931900134	EBAY O*11-07791-57906 408-3766151 CA	80.04✓
11-01	10-30	24692161303100618667765	HNS*HUGHESNET.COM 866-347-3292 MD	42.89✓
11-02	11-01	24275391305900017270798	KERN DATA 888-8717205 CA	115.22✓
11-04	11-03	24204291307004641020137	EBAY O*08-07817-27780 408-3766151 CA	40.00✓
11-08	11-05	24121571310310326723675	WATERFILTERS.NET 888-8017873 MN	16.54✓
11-08	11-06	24943011311010191701879	THE HOME DEPOT #6835 TEHACHAPI CA	112.83✓
11-09	11-07	24692161312100827077243	THE HOME DEPOT 6835 TEHACHAPI CA	116.25✓
11-15	11-13	24430991317400815039698	MSFT * E0500GLOWB 800-642-7676 WA	257.66✓
11-15	11-13	24692161317100633300529	INTUIT *PAYROLLEE USAG 833-830-9255 CA	8.25✓
11-18	11-16	24207851321164300665133	KERN RIVER PROPANE 760-3796259 CA	6.00✓
11-19	11-18	24204291322303567984941	EBAY O*11-07885-44845 408-3766151 CA	427.78✓
				28.09✓

Department: 00000 Total:
 Division: 00000 Total:

\$2,710.79
 \$2,710.79

9:20 AM

10/28/21

Quail Valley Water District Reconciliation Summary

222200 · Acc Payable - Cal Cards, Period Ending 10/20/2021

	<u>Oct 20, 21</u>
Beginning Balance	1,941.07
Cleared Transactions	
Charges and Cash Advances - 15 items	-1,754.24
Payments and Credits - 2 items	2,060.37
Total Cleared Transactions	<u>306.13</u>
Cleared Balance	<u><u>1,634.94</u></u>
Uncleared Transactions	
Charges and Cash Advances - 9 items	-1,385.41
Payments and Credits - 1 item	1,634.94
Total Uncleared Transactions	<u>249.53</u>
Register Balance as of 10/20/2021	<u><u>1,385.41</u></u>
New Transactions	
Charges and Cash Advances - 3 items	-278.26
Total New Transactions	<u>-278.26</u>
Ending Balance	<u><u>1,663.67</u></u>

P.O. BOX 6343
FARGO ND 58125-6343



ACCOUNT NUMBER 4246 0445 5573 8586
STATEMENT DATE 10-20-2021
AMOUNT DUE \$1,634.94
NEW BALANCE \$1,634.94
PAYMENT DUE ON RECEIPT \$1,634.94

000000028 01 SP 0.530 106481408054688 P
QUAIL VALLEY WATER DIST
ATTN RICHARD CANTRELL
24750 SAND CANYON ROAD
TEHACHAPI CA 93561-8115

AMOUNT ENCLOSED
 \$
 Please make check payable to "U.S. Bank"

U.S. BANK CORPORATE PAYMENT SYSTEMS
P.O. BOX 790428
ST. LOUIS, MO 63179-0428

4246044555738586 000163494 000163494

Please tear payment coupon at perforation.

CORPORATE ACCOUNT SUMMARY									
QUAIL VALLEY WATER D 4246 0445 5573 8586	Previous Balance	Purchases And Other + Charges	Cash Advances +	Cash Advance Fees +	Late Payment Charges	- Credits	- Payments	New = Balance	
Company Total	\$1,941.07	\$1,754.24	\$0.00	\$0.00	\$0.00	\$119.30	\$1,941.07	\$1,634.94	

CORPORATE ACCOUNT ACTIVITY					TOTAL CORPORATE ACTIVITY
Post Date	Tran Date	Reference Number	Transaction Description	Amount	\$1,941.07 CR
10-15	10-15	7479826128800000000119	PAYMENT - QUAIL VALLEY WA00000 A	1,941.07 PY	

NEW ACTIVITY					
Post Date	Tran Date	Reference Number	Transaction Description	Amount	
		RANDY HARDENBROOK 4246-0402-8026-4344		CREDITS \$119.30	PURCHASES \$1,754.24
				CASH ADV \$0.00	TOTAL ACTIVITY \$1,634.94
09-24	09-24	24204291266009436478720	EBAY O*19-07641-37872 408-3766151 CA	119.30	
09-24	09-24	24204291266009437138729	EBAY O*19-07641-37873 408-3766151 CA	32.16	✓
09-27	09-26	24204291269005616938738	EBAY O*20-07651-23378 408-3766151 CA	64.34	✓
09-29	09-29	24492161272000007943356	SP * FRESHWATERSYSTEMS HTTPSFWSO.MY SC	118.32	✓
09-29	09-28	24692161272100410661864	LESLIES POOL SPLY PALMDALE CA	57.73	✓

CUSTOMER SERVICE CALL 800-344-5696	ACCOUNT NUMBER 4246-0445-5573-8586		ACCOUNT SUMMARY	
	STATEMENT DATE 10/20/21	DISPUTED AMOUNT .00	PREVIOUS BALANCE 1,941.07	PURCHASES & OTHER CHARGES 1,754.24
SEND BILLING INQUIRIES TO: U.S. Bank National Association C/O U.S. Bancorp Purchasing Card Program P.O. Box 6335 Fargo, ND 58125-6335	AMOUNT DUE 1,634.94		CASH ADVANCES .00	CASH ADVANCE FEES .00
			LATE PAYMENT CHARGES .00	CREDITS 119.30
			PAYMENTS 1,941.07	ACCOUNT BALANCE 1,634.94



Company Name: QUAIL VALLEY WATER DIST
Corporate Account Number: 4246 0445 5573 8586
Statement Date: 10-20-2021

NEW ACTIVITY				
Post Date	Tran Date	Reference Number	Transaction Description	Amount
10-01	09-30	74204291273000354018727	EBAY O*19-07641-37872 408-3766151 CA	119.30 CR
10-01	09-30	24692161273100375246775	HNS*HUGHESNET.COM 866-347-9292 MD	115.22
10-04	10-01	24275391274900015952980	KERN DATA 888-8717205 CA	40.00
10-05	10-04	24692161277100092195913	LOWES #00790* BAKERSFIELD CA	72.65 ✓
10-07	10-06	24801971279207251400154	GAS ON TEHACHAPI CA	24.22 ✓
10-07	10-06	24801971279207251400170	GAS ON TEHACHAPI CA	202.21 ✓
10-08	10-07	24137461281600168808787	USPS.COM POSTAL STORE 800-782-6724 MO	234.00 ✓
10-08	10-07	24204291280008537604947	EBAY O*09-07703-08797 408-3766151 CA	32.16 ✓
10-13	10-13	24430991286400816035056	MSFT * E0500G9ECJ 800-642-7676 WA	8.25 ✓
10-14	10-13	24692161286100486304955	INTUIT *PAYROLLEE USAG 833-830-9255 CA	6.00 ✓
10-14	10-13	24692161286100904411754	WGD*ARAMARK CORP NORWL 800-888-2900 MA	627.68 ✓

Department: 00000 Total: \$1,634.94
 Division: 00000 Total: \$1,634.94



A STATE OF
CALIFORNIA
PUBLIC AGENCY

QUAIL VALLEY WATER DISTRICT

BOARD OF DIRECTORS

Mike Biglay
Jean Grodewald
Rita Leonard Phillips
Enrique Lopez
Joan Tyer

Assistant General Manager

QUAIL VALLEY WATER DISTRICT
Revision Date: May 1, 2021

DESCRIPTION:

Under administrative direction from the General Manager, the Assistant General Manager provides support for the General Manager and gains experience necessary to assume duties of General Manager. Position is full-time based on an average work week of 40 hours and is salary exempt.

SUPERVISION RECEIVED AND EXERCISED

Receives direction from the General Manager. In the absence of the General Manager, assumes full duties of General Manager. Position involves extensive use of independent judgement and decision making.

EXAMPLES OF DUTIES:

- Works in partnership with the Board of Directors to establish and clarify the District's mission, vision goals and objectives.
- Directs District-wide planning efforts to develop, recommend and implement strategic goals, objectives, policies and procedures.
- Serves as Chief Administrative Officer for the District.
- Serves as Chairperson for all Board and committee meetings.
- Serves as District Distribution and Treatment Chief Operators.
- Oversees development of Board agendas.
- Provides advice and consultation on the development of District programs and policies.
- Oversees the preparation of the annual budget, making recommendations to the Board on final expenditure levels.
- Oversees District personnel matters, including employment procedures, grievances, classification and pay.
- Oversees the loan and grant application process and maintains responsibility for proper administration of loans and grants received.
- Prepares long-term Capital Improvement plans.
- Represents the District before Boards and commissions.
- Monitor the District's financial condition, analyze financial statements and identify trends and irregularities.
- Prepare and review technical designs, maps, drawings, visual aids, and graphic presentation materials related to District facilities projects; use manual or computerized methods to develop or revise engineering drawings during design and construction phase.
- Perform technical design review including conceptual and detailed design review according to District standards and policies; issue rejection or will-serve notifications.
- Maintain mapping and recording of the District's conveyance and distribution systems and related water facilities; identify and report problems with new and/or existing pipeline maintenance and construction.
- Work with consultants and private engineers relative to the design of water facilities; prepare estimates for connection fees and meter installation; perform survey work and prepare field sketches and notes.
- Prepare plan specifications or modifications and ensure compliance with building and design codes.

- Inspect construction methods and materials to ensure compliance with approved plans and specifications.
- Directs office operations and procedures such as bookkeeping, requisition and purchase of supplies, and other related services in accordance with modern office management methods.
- Oversees the record keeping and reporting systems of the District.
- Oversees risk management, training, environmental, and safety programs of the District.
- Develops and maintains District's human resources policies and procedures.
- Assures that District employment, safety, labor relations, personnel, and equal opportunity policies and practices comply with the applicable provisions of federal and state labor laws, including the maintenance of necessary files, etc.
- Develops and maintains the District job descriptions; administers the benefit programs; administers the District's compensation program, ensuring increases and adjustments are timely and that the District's programs remain competitive with the market.
- Ensure regulatory compliance with State and Federal agencies regarding water quality testing, analysis, and production.
- Prepares and maintains regulatory permits required for District operations including air quality permits, discharge permits, and system permits.
- Construct, operate, repair, adjust, and maintain pumps, pump and motor controls, tanks, valves, and various other water systems and related components; operates tools and equipment used to perform operation, maintenance, adjustment, repair, and construction of water system components and facilities such as hand and powered tools, crane, forklift, backhoe, dump truck, and water truck.
- Plan, implement, and coordinate the District's public relations program; prepare written publicity materials such as brochures, pamphlets, news releases, newsletters, and flyers; coordinate production and distribution of publicity materials.
- Develops, implements, and maintains an effective cross connection control program; sets up and maintains accurate records of compliance for annual testing of backflow devices.
- Conducts water use survey of all customer accounts to ensure no hazardous or potentially hazardous conditions exist.
- Assist, train, mentor, and coach other District staff as needed.

TYPICAL QUALIFICATIONS:

Knowledge of:

Principles and practices of public administration, including administrative analysis, fiscal planning and control, policy and program development; organization, operation, and issues of special districts.
 Laws, rules, ordinances, and legislative processes controlling District functions, programs, and operations.
 Principles and practices of financial management, accounting, budgeting, risk management, cost estimating and contract administration.
 Principles and practices of office management, personnel administration, and employee safety and training programs.
 Principles and practices of water utility operations including water treatment, and distribution; principles and practices common to building maintenance, asset management, and equipment diagnosis and repair.
 Design, construction, operation and diagnosis of wells, pumps and motors; ability to read, understand and apply information typically found in pump specifications and curves.
 Methods of preparing designs, plans, specification, estimates, and reports related to water distribution; methods, materials, and techniques used in the construction of public works.
 Mathematics and physics as applied to engineering, topography, hydraulics, design of simple structures, hydrology, drainage, irrigation, and construction.
 Computer software commonly used in word processing, spreadsheet, accounting, and database applications; operation of typical office equipment and machines.
 Operations, procedures, policies, and precedents of the District

Ability to:

Plan, organize, coordinate, and direct the work of staff to achieve efficient operations and meet District goals.
Prepare concise and comprehensive reports; oversee the preparation of Board agendas; communicate well during public presentations; collect, organize, and analyze data on a variety of topics.
Exercise leadership, authority, and supervision tactfully and effectively.
Evaluate and make recommendations on improvements to existing District operations, programs, facilities and assets.
Provide advice and consultation to the Board of Directors on the development of ordinances, regulations, programs and policies.
Effectively represent the District's policies, programs, and services with individual citizens, community groups, and other governmental organizations.
Perform technical engineering support duties in the design, construction, and maintenance of the District's water distribution system and facilities.
Plan, carry out, and coordinate District engineering projects; Ensure proper completion and inspection of construction projects and related materials.
Inspect, diagnose, adjust, repair, replace, and maintain District facilities and equipment, including pumps, motors, wells, generators, water treatment plant, valves, and controls.
Organize, implement, and direct regulatory and compliance activities.
Perform field surveys of consumer water use activities; inspect, diagnose, adjust and repair backflow prevention devices and assemblies.
Operate equipment such as crane, backhoe, dump truck, hand and power tools, pipe fitting, and welding equipment common to the repair of water utilities.
Intermittently, walk stand, kneel, climb, and bend in the field; sit at a desk, in meetings, driving in vehicle or operating equipment for long periods of time; perform simple and power grasping, pushing, pulling and fine manipulation; intermittently write or use a keyboard to communicate; and lift or carry weight of up to 100 pounds.
Work outdoors in a variety of weather conditions; must be available to respond to emergencies within 1 hour, work after business hours, weekends, holidays, and extended work shifts.

Education and Experience

Any combination of education and experience that would provide the required knowledge and abilities is qualifying. A typical way to obtain the required knowledge and abilities would be:

Experience:

A minimum of 2 years experience in water system operations or related field, including a minimum of 1 years of management responsibility is preferred.
1 year of skilled work in construction, repair, and maintenance of water distribution systems and components including underground piping, valves, pumps, motors, and wells or related experience is preferred.

Training:

Successful completion of USC FCCC "Cross-Connection Control Program Specialist" and "Backflow Prevention Assembly Tester" courses highly desirable.

License and Certificate

Possession of, or ability to obtain, a valid California driver's license; commercial Class A with tank endorsement preferred.
Possession of, or ability to obtain, a valid California Grade 1 Distribution certificate.
Possession of, or ability to obtain, a valid California Grade 1 Treatment certificate.
Possession of, or ability to obtain, a valid AWWA or ABPA Backflow Prevention Assembly Tester certificate.
Possession of, or ability to obtain, a valid AWWA or ABPA Cross-Connection Control Specialist certificate.

SUPPLEMENTAL INFORMATION:

PHYSICAL REQUIREMENTS AND WORKING CONDITIONS

1. Communicate clearly and concisely, both orally, and in writing.
2. Hear normal conversation in person and/or on the telephone.
3. Vision must be sufficient to accomplish the duties of the position, which may include operating a District vehicle.
4. Sit for prolonged periods of time.
5. Manual dexterity must be sufficient to accomplish the duties of the position.
6. Push and pull 50 to 100 pounds.
7. Lift and carry 50 to 100 pounds.
8. Stand for prolonged periods of time to include frequent twisting, kneeling, stretching, bending, stooping, crouching, crawling, climbing, and squatting.
9. Exposure to hazardous machinery.

10. Works in an environment with exposure to dust, dirt, water, and significant temperature changes between cold and heat.

SALARY RANGE	Step 1	Step 2	Step 3	Step 4	Step 5	Step 6	Step 7	Step 8	Step 9
1	\$10.00	\$10.50	\$11.03	\$11.58	\$12.16	\$12.76	\$13.40	\$14.07	\$14.77
2	\$10.50	\$11.03	\$11.58	\$12.16	\$12.76	\$13.40	\$14.07	\$14.77	\$15.51
3	\$11.03	\$11.58	\$12.16	\$12.76	\$13.40	\$14.07	\$14.77	\$15.51	\$16.29
4	\$11.58	\$12.16	\$12.76	\$13.40	\$14.07	\$14.77	\$15.51	\$16.29	\$17.10
5	\$12.16	\$12.76	\$13.40	\$14.07	\$14.77	\$15.51	\$16.29	\$17.10	\$17.96
6	\$12.76	\$13.40	\$14.07	\$14.77	\$15.51	\$16.29	\$17.10	\$17.96	\$18.86
7	\$13.40	\$14.07	\$14.77	\$15.51	\$16.29	\$17.10	\$17.96	\$18.86	\$19.80
8	\$14.07	\$14.77	\$15.51	\$16.29	\$17.10	\$17.96	\$18.86	\$19.80	\$20.79
9	\$14.77	\$15.51	\$16.29	\$17.10	\$17.96	\$18.86	\$19.80	\$20.79	\$21.83
10	\$15.51	\$16.29	\$17.10	\$17.96	\$18.86	\$19.80	\$20.79	\$21.83	\$22.92
11	\$16.29	\$17.10	\$17.96	\$18.86	\$19.80	\$20.79	\$21.83	\$22.92	\$24.07
12	\$17.10	\$17.96	\$18.86	\$19.80	\$20.79	\$21.83	\$22.92	\$24.07	\$25.27
13	\$17.96	\$18.86	\$19.80	\$20.79	\$21.83	\$22.92	\$24.07	\$25.27	\$26.53
14	\$18.86	\$19.80	\$20.79	\$21.83	\$22.92	\$24.07	\$25.27	\$26.53	\$27.86
15	\$19.80	\$20.79	\$21.83	\$22.92	\$24.07	\$25.27	\$26.53	\$27.86	\$29.25
16	\$20.79	\$21.83	\$22.92	\$24.07	\$25.27	\$26.53	\$27.86	\$29.25	\$30.72
17	\$21.83	\$22.92	\$24.07	\$25.27	\$26.53	\$27.86	\$29.25	\$30.72	\$32.25
18	\$22.92	\$24.07	\$25.27	\$26.53	\$27.86	\$29.25	\$30.72	\$32.25	\$33.86
19	\$24.07	\$25.27	\$26.53	\$27.86	\$29.25	\$30.72	\$32.25	\$33.86	\$35.56
20	\$25.27	\$26.53	\$27.86	\$29.25	\$30.72	\$32.25	\$33.86	\$35.56	\$37.33
21	\$26.53	\$27.86	\$29.25	\$30.72	\$32.25	\$33.86	\$35.56	\$37.33	\$39.20
22	\$27.86	\$29.25	\$30.72	\$32.25	\$33.86	\$35.56	\$37.33	\$39.20	\$41.16
23	\$29.25	\$30.72	\$32.25	\$33.86	\$35.56	\$37.33	\$39.20	\$41.16	\$43.22
24	\$30.72	\$32.25	\$33.86	\$35.56	\$37.33	\$39.20	\$41.16	\$43.22	\$45.38
25	\$32.25	\$33.86	\$35.56	\$37.33	\$39.20	\$41.16	\$43.22	\$45.38	\$47.65
26	\$33.86	\$35.56	\$37.33	\$39.20	\$41.16	\$43.22	\$45.38	\$47.65	\$50.03
27	\$35.56	\$37.33	\$39.20	\$41.16	\$43.22	\$45.38	\$47.65	\$50.03	\$52.53
28	\$37.33	\$39.20	\$41.16	\$43.22	\$45.38	\$47.65	\$50.03	\$52.53	\$55.16
29	\$39.20	\$41.16	\$43.22	\$45.38	\$47.65	\$50.03	\$52.53	\$55.16	\$57.92
30	\$41.16	\$43.22	\$45.38	\$47.65	\$50.03	\$52.53	\$55.16	\$57.92	\$60.81
31	\$43.22	\$45.38	\$47.65	\$50.03	\$52.53	\$55.16	\$57.92	\$60.81	\$63.85
32	\$45.38	\$47.65	\$50.03	\$52.53	\$55.16	\$57.92	\$60.81	\$63.85	\$67.05
33	\$47.65	\$50.03	\$52.53	\$55.16	\$57.92	\$60.81	\$63.85	\$67.05	\$70.40
34	\$50.03	\$52.53	\$55.16	\$57.92	\$60.81	\$63.85	\$67.05	\$70.40	\$73.92
35	\$52.53	\$55.16	\$57.92	\$60.81	\$63.85	\$67.05	\$70.40	\$73.92	\$77.62
36	\$55.16	\$57.92	\$60.81	\$63.85	\$67.05	\$70.40	\$73.92	\$77.62	\$81.50
37	\$57.92	\$60.81	\$63.85	\$67.05	\$70.40	\$73.92	\$77.62	\$81.50	\$85.57
38	\$60.81	\$63.85	\$67.05	\$70.40	\$73.92	\$77.62	\$81.50	\$85.57	\$89.85
39	\$63.85	\$67.05	\$70.40	\$73.92	\$77.62	\$81.50	\$85.57	\$89.85	\$94.34
40	\$67.05	\$70.40	\$73.92	\$77.62	\$81.50	\$85.57	\$89.85	\$94.34	\$99.06
41	\$70.40	\$73.92	\$77.62	\$81.50	\$85.57	\$89.85	\$94.34	\$99.06	\$104.01
42	\$73.92	\$77.62	\$81.50	\$85.57	\$89.85	\$94.34	\$99.06	\$104.01	\$109.21
43	\$77.62	\$81.50	\$85.57	\$89.85	\$94.34	\$99.06	\$104.01	\$109.21	\$114.67
44	\$81.50	\$85.57	\$89.85	\$94.34	\$99.06	\$104.01	\$109.21	\$114.67	\$120.41
45	\$85.57	\$89.85	\$94.34	\$99.06	\$104.01	\$109.21	\$114.67	\$120.41	\$126.43
46	\$89.85	\$94.34	\$99.06	\$104.01	\$109.21	\$114.67	\$120.41	\$126.43	\$132.75
47	\$94.34	\$99.06	\$104.01	\$109.21	\$114.67	\$120.41	\$126.43	\$132.75	\$139.39
48	\$99.06	\$104.01	\$109.21	\$114.67	\$120.41	\$126.43	\$132.75	\$139.39	\$146.36
49	\$104.01	\$109.21	\$114.67	\$120.41	\$126.43	\$132.75	\$139.39	\$146.36	\$153.67
50	\$109.21	\$114.67	\$120.41	\$126.43	\$132.75	\$139.39	\$146.36	\$153.67	\$161.36

SALARY RANGE	Step 1	Step 2	Step 3	Step 4	Step 5	Step 6	Step 7	Step 8	Step 9
1	\$10.10	\$10.61	\$11.14	\$11.69	\$12.28	\$12.89	\$13.53	\$14.21	\$14.92
2	\$10.61	\$11.14	\$11.69	\$12.28	\$12.89	\$13.53	\$14.21	\$14.92	\$15.67
3	\$11.14	\$11.69	\$12.28	\$12.89	\$13.53	\$14.21	\$14.92	\$15.67	\$16.45
4	\$11.69	\$12.28	\$12.89	\$13.53	\$14.21	\$14.92	\$15.67	\$16.45	\$17.27
5	\$12.28	\$12.89	\$13.53	\$14.21	\$14.92	\$15.67	\$16.45	\$17.27	\$18.14
6	\$12.89	\$13.53	\$14.21	\$14.92	\$15.67	\$16.45	\$17.27	\$18.14	\$19.05
7	\$13.53	\$14.21	\$14.92	\$15.67	\$16.45	\$17.27	\$18.14	\$19.05	\$20.00
8	\$14.21	\$14.92	\$15.67	\$16.45	\$17.27	\$18.14	\$19.05	\$20.00	\$21.00
9	\$14.92	\$15.67	\$16.45	\$17.27	\$18.14	\$19.05	\$20.00	\$21.00	\$22.05
10	\$15.67	\$16.45	\$17.27	\$18.14	\$19.05	\$20.00	\$21.00	\$22.05	\$23.15
11	\$16.45	\$17.27	\$18.14	\$19.05	\$20.00	\$21.00	\$22.05	\$23.15	\$24.31
12	\$17.27	\$18.14	\$19.05	\$20.00	\$21.00	\$22.05	\$23.15	\$24.31	\$25.52
13	\$18.14	\$19.05	\$20.00	\$21.00	\$22.05	\$23.15	\$24.31	\$25.52	\$26.80
14	\$19.05	\$20.00	\$21.00	\$22.05	\$23.15	\$24.31	\$25.52	\$26.80	\$28.14
15	\$20.00	\$21.00	\$22.05	\$23.15	\$24.31	\$25.52	\$26.80	\$28.14	\$29.55
16	\$21.00	\$22.05	\$23.15	\$24.31	\$25.52	\$26.80	\$28.14	\$29.55	\$31.02
17	\$22.05	\$23.15	\$24.31	\$25.52	\$26.80	\$28.14	\$29.55	\$31.02	\$32.57
18	\$23.15	\$24.31	\$25.52	\$26.80	\$28.14	\$29.55	\$31.02	\$32.57	\$34.20
19	\$24.31	\$25.52	\$26.80	\$28.14	\$29.55	\$31.02	\$32.57	\$34.20	\$35.91
20	\$25.52	\$26.80	\$28.14	\$29.55	\$31.02	\$32.57	\$34.20	\$35.91	\$37.71
21	\$26.80	\$28.14	\$29.55	\$31.02	\$32.57	\$34.20	\$35.91	\$37.71	\$39.59
22	\$28.14	\$29.55	\$31.02	\$32.57	\$34.20	\$35.91	\$37.71	\$39.59	\$41.57
23	\$29.55	\$31.02	\$32.57	\$34.20	\$35.91	\$37.71	\$39.59	\$41.57	\$43.65
24	\$31.02	\$32.57	\$34.20	\$35.91	\$37.71	\$39.59	\$41.57	\$43.65	\$45.83
25	\$32.57	\$34.20	\$35.91	\$37.71	\$39.59	\$41.57	\$43.65	\$45.83	\$48.13
26	\$34.20	\$35.91	\$37.71	\$39.59	\$41.57	\$43.65	\$45.83	\$48.13	\$50.53
27	\$35.91	\$37.71	\$39.59	\$41.57	\$43.65	\$45.83	\$48.13	\$50.53	\$53.06
28	\$37.71	\$39.59	\$41.57	\$43.65	\$45.83	\$48.13	\$50.53	\$53.06	\$55.71
29	\$39.59	\$41.57	\$43.65	\$45.83	\$48.13	\$50.53	\$53.06	\$55.71	\$58.50
30	\$41.57	\$43.65	\$45.83	\$48.13	\$50.53	\$53.06	\$55.71	\$58.50	\$61.42
31	\$43.65	\$45.83	\$48.13	\$50.53	\$53.06	\$55.71	\$58.50	\$61.42	\$64.49
32	\$45.83	\$48.13	\$50.53	\$53.06	\$55.71	\$58.50	\$61.42	\$64.49	\$67.72
33	\$48.13	\$50.53	\$53.06	\$55.71	\$58.50	\$61.42	\$64.49	\$67.72	\$71.10
34	\$50.53	\$53.06	\$55.71	\$58.50	\$61.42	\$64.49	\$67.72	\$71.10	\$74.66
35	\$53.06	\$55.71	\$58.50	\$61.42	\$64.49	\$67.72	\$71.10	\$74.66	\$78.39
36	\$55.71	\$58.50	\$61.42	\$64.49	\$67.72	\$71.10	\$74.66	\$78.39	\$82.31
37	\$58.50	\$61.42	\$64.49	\$67.72	\$71.10	\$74.66	\$78.39	\$82.31	\$86.43
38	\$61.42	\$64.49	\$67.72	\$71.10	\$74.66	\$78.39	\$82.31	\$86.43	\$90.75
39	\$64.49	\$67.72	\$71.10	\$74.66	\$78.39	\$82.31	\$86.43	\$90.75	\$95.29
40	\$67.72	\$71.10	\$74.66	\$78.39	\$82.31	\$86.43	\$90.75	\$95.29	\$100.05
41	\$71.10	\$74.66	\$78.39	\$82.31	\$86.43	\$90.75	\$95.29	\$100.05	\$105.05
42	\$74.66	\$78.39	\$82.31	\$86.43	\$90.75	\$95.29	\$100.05	\$105.05	\$110.31
43	\$78.39	\$82.31	\$86.43	\$90.75	\$95.29	\$100.05	\$105.05	\$110.31	\$115.82
44	\$82.31	\$86.43	\$90.75	\$95.29	\$100.05	\$105.05	\$110.31	\$115.82	\$121.61
45	\$86.43	\$90.75	\$95.29	\$100.05	\$105.05	\$110.31	\$115.82	\$121.61	\$127.69
46	\$90.75	\$95.29	\$100.05	\$105.05	\$110.31	\$115.82	\$121.61	\$127.69	\$134.08
47	\$95.29	\$100.05	\$105.05	\$110.31	\$115.82	\$121.61	\$127.69	\$134.08	\$140.78
48	\$100.05	\$105.05	\$110.31	\$115.82	\$121.61	\$127.69	\$134.08	\$140.78	\$147.82
49	\$105.05	\$110.31	\$115.82	\$121.61	\$127.69	\$134.08	\$140.78	\$147.82	\$155.21
50	\$110.31	\$115.82	\$121.61	\$127.69	\$134.08	\$140.78	\$147.82	\$155.21	\$162.97

Palmdale Water District - 2022

Position	Range Number
Accounting Supervisor	36
Accounts Payable Specialist	23
Assistant Engineer	32
Assist. General Manager	48
Construction Inspector Trainee	25
Construction Inspector I	28
Construction Inspector II	29
Construction Supervisor	34
Cross Connection Control Specialist	29
Customer Account Technician	24
Customer Care Representative I	20
Customer Care Representative II	23
Customer Care Supervisor	36
Customer Finance Supervisor	35
Electrician II	29
Electronic Technician II	30
Electrical/Electronic Instrumentation Technician III	32
Engineering Technician II	27
Engineering Analyst	33
Engineering Design Technician	29
Engineering/Grant Manager	44
Executive Assistant	34
Facilities Manager	41
Field Customer Care Representative I	21
Field Customer Care Representative II	23
Finance Manager/CFO	45
GIS Coordinator	32
Human Resources Director	41
Information Technology Specialist	27
Information Technology Manager	41
Lab Analyst I	26
Lab Analyst II	29
Maintenance Supervisor	34
Maintenance Worker II	24
Management Analyst	31
Network Administrator	34
Operations Manager	41
Operations Technician I	25
Operations Technician II	28
Operations Technician III - Fleet	31
Plant Operator I	26
Plant Operator II	29
Plant Operator III	32
Project Manager	35
Public Affairs Director	38
Public Affairs Specialist I	27
Public Affairs Specialist II	30
Purchasing Technician	27
Resource and Analytics Director	45
Resource and Analytics Supervisor	35
Safety and Training Technician	29
Senior Customer Care Representative	29
Senior Field Customer Care Representative	28
Service Worker I	21
Service Worker II	25
Service Worker III - Foreman	29
Water Use Efficiency Technician 1	27
Water Quality/Regulatory Affairs Supervisor	35

RANGE	Step 1	Step 2	Step 3	Step 4	Step 5	Step 6	Step 7	Step 8	Step 9
1	\$10.5545	\$10.8184	\$11.0822	\$11.3593	\$11.6363	\$11.9272	\$12.2182	\$12.5236	\$12.8291
2	\$11.0822	\$11.3593	\$11.6363	\$11.9272	\$12.2182	\$12.5236	\$12.8291	\$13.1498	\$13.4705
3	\$11.6363	\$11.9272	\$12.2182	\$12.5236	\$12.8291	\$13.1498	\$13.4705	\$13.8073	\$14.1440
4	\$12.2182	\$12.5236	\$12.8291	\$13.1498	\$13.4705	\$13.8073	\$14.1440	\$14.4976	\$14.8512
5	\$12.8291	\$13.1498	\$13.4705	\$13.8073	\$14.1440	\$14.4976	\$14.8512	\$15.2225	\$15.5938
6	\$13.4705	\$13.8073	\$14.1440	\$14.4976	\$14.8512	\$15.2225	\$15.5938	\$16.3735	\$16.7828
7	\$14.1440	\$14.4976	\$14.8512	\$15.2225	\$15.5938	\$16.3735	\$16.7828	\$17.1922	\$17.6220
8	\$14.8512	\$15.2225	\$15.5938	\$15.9836	\$16.3735	\$16.7828	\$17.1922	\$18.0518	\$18.5031
9	\$15.5938	\$15.9836	\$16.3735	\$16.7828	\$17.1922	\$17.6220	\$18.0518	\$19.4282	\$19.9021
10	\$16.3735	\$16.7828	\$17.1922	\$17.6220	\$18.0518	\$18.5031	\$18.9544	\$19.4282	\$20.3996
11	\$17.1922	\$17.6220	\$18.0518	\$18.5031	\$18.9544	\$19.4282	\$19.9021	\$20.3996	\$20.8972
12	\$18.0518	\$18.5031	\$18.9544	\$19.4282	\$19.9021	\$20.3996	\$20.8972	\$21.4196	\$21.9420
13	\$18.9544	\$19.4282	\$19.9021	\$20.3996	\$20.8972	\$21.4196	\$21.9420	\$22.4906	\$23.0391
14	\$19.9021	\$20.3996	\$20.8972	\$21.4196	\$21.9420	\$22.4906	\$23.0391	\$23.6151	\$24.1911
15	\$20.8972	\$21.4196	\$21.9420	\$22.4906	\$23.0391	\$23.6151	\$24.1911	\$24.7959	\$25.4007
16	\$21.9420	\$22.4906	\$23.0391	\$23.6151	\$24.1911	\$24.7959	\$25.4007	\$26.0357	\$26.6707
17	\$23.0391	\$23.6151	\$24.1911	\$24.7959	\$25.4007	\$26.0357	\$26.6707	\$27.3375	\$28.0042
18	\$24.1911	\$24.7959	\$25.4007	\$26.0357	\$26.6707	\$27.3375	\$28.0042	\$28.7043	\$29.4044
19	\$25.4007	\$26.0357	\$26.6707	\$27.3375	\$28.0042	\$28.7043	\$29.4044	\$30.1396	\$30.8747
20	\$26.6707	\$27.3375	\$28.0042	\$28.7043	\$29.4044	\$30.1396	\$30.8747	\$31.6465	\$32.4184
21	\$28.0042	\$28.7043	\$29.4044	\$30.1396	\$30.8747	\$31.6465	\$32.4184	\$33.2289	\$34.0393
22	\$29.4044	\$30.1396	\$30.8747	\$31.6465	\$32.4184	\$33.2289	\$34.0393	\$34.8903	\$35.7413
23	\$30.8747	\$31.6465	\$32.4184	\$33.2289	\$34.0393	\$34.8903	\$35.7413	\$36.6348	\$37.5283
24	\$32.4184	\$33.2289	\$34.0393	\$34.8903	\$35.7413	\$36.6348	\$37.5283	\$38.4666	\$39.4048
25	\$34.0393	\$34.8903	\$35.7413	\$36.6348	\$37.5283	\$38.4666	\$39.4048	\$40.3899	\$41.3750
26	\$35.7413	\$36.6348	\$37.5283	\$38.4666	\$39.4048	\$40.3899	\$41.3750	\$42.4094	\$43.4438
27	\$37.5283	\$38.4666	\$39.4048	\$40.3899	\$41.3750	\$42.4094	\$43.4438	\$44.5298	\$45.6159
28	\$39.4048	\$40.3899	\$41.3750	\$42.4094	\$43.4438	\$44.5298	\$45.6159	\$46.7563	\$47.8967
29	\$41.3750	\$42.4094	\$43.4438	\$44.5298	\$45.6159	\$46.7563	\$47.8967	\$49.0942	\$50.2916
30	\$43.4438	\$44.5298	\$45.6159	\$46.7563	\$47.8967	\$49.0942	\$50.2916	\$51.5489	\$52.8062
31	\$45.6159	\$46.7563	\$47.8967	\$49.0942	\$50.2916	\$51.5489	\$52.8062	\$54.1263	\$55.4465
32	\$47.8967	\$49.0942	\$50.2916	\$51.5489	\$52.8062	\$54.1263	\$55.4465	\$56.8326	\$58.2188
33	\$50.2916	\$51.5489	\$52.8062	\$54.1263	\$55.4465	\$56.8326	\$58.2188	\$59.6743	\$61.1297
34	\$52.8062	\$54.1263	\$55.4465	\$56.8326	\$58.2188	\$59.6743	\$61.1297	\$62.6580	\$64.1862
35	\$55.4465	\$56.8326	\$58.2188	\$59.6743	\$61.1297	\$62.6580	\$64.1862	\$65.7909	\$67.3955
36	\$58.2188	\$59.6743	\$61.1297	\$62.6580	\$64.1862	\$65.7909	\$67.3955	\$69.0804	\$70.7653
37	\$61.1297	\$62.6580	\$64.1862	\$65.7909	\$67.3955	\$69.0804	\$70.7653	\$72.5344	\$74.3036
38	\$64.1862	\$65.7909	\$67.3955	\$69.0804	\$70.7653	\$72.5344	\$74.3036	\$76.1611	\$78.0187
39	\$67.3955	\$69.0804	\$70.7653	\$72.5344	\$74.3036	\$76.1611	\$78.0187	\$79.9692	\$81.9197
40	\$70.7653	\$72.5344	\$74.3036	\$76.1611	\$78.0187	\$79.9692	\$81.9197	\$83.9677	\$86.0157
41	\$74.3036	\$76.1611	\$78.0187	\$79.9692	\$81.9197	\$83.9677	\$86.0157	\$88.1661	\$90.3164
42	\$78.0187	\$79.9692	\$81.9197	\$83.9677	\$86.0157	\$88.1661	\$90.3164	\$92.5744	\$94.8323
43	\$81.9197	\$83.9677	\$86.0157	\$88.1661	\$90.3164	\$92.5744	\$94.8323	\$97.2031	\$99.5739
44	\$86.0157	\$88.1661	\$90.3164	\$92.5744	\$94.8323	\$97.2031	\$99.5739	\$102.0632	\$104.5526
45	\$90.3164	\$92.5744	\$94.8323	\$97.2031	\$99.5739	\$102.0632	\$104.5526	\$107.1664	\$109.7802
46	\$94.8323	\$97.2031	\$99.5739	\$102.0632	\$104.5526	\$107.1664	\$109.7802	\$112.5247	\$115.2692
47	\$99.5739	\$102.0632	\$104.5526	\$107.1664	\$109.7802	\$112.5247	\$115.2692	\$118.1509	\$121.0327
48	\$104.5526	\$107.1664	\$109.7802	\$112.5247	\$115.2692	\$118.1509	\$121.0327	\$124.0585	\$127.0843
49	\$109.7802	\$112.5247	\$115.2692	\$118.1509	\$121.0327	\$124.0585	\$127.0843	\$130.2614	\$133.4385
50	\$115.2692	\$118.1509	\$121.0327	\$124.0585	\$127.0843	\$130.2614	\$133.4385	\$136.7745	\$140.1104
51	\$121.0327	\$124.0585	\$127.0843	\$130.2614	\$133.4385	\$136.7745	\$140.1104	\$143.6132	\$147.1160
52	\$127.0843	\$130.2614	\$133.4385	\$136.7745	\$140.1104	\$143.6132	\$147.1160	\$150.7939	\$154.4718
53	\$133.4385	\$136.7745	\$140.1104	\$143.6132	\$147.1160	\$150.7939	\$154.4718	\$158.3336	\$162.1954
54	\$140.1104	\$143.6132	\$147.1160	\$150.7939	\$154.4718	\$158.3336	\$162.1954	\$166.2502	\$170.3051
55	\$147.1160	\$150.7939	\$154.4718	\$158.3336	\$162.1954	\$166.2502	\$170.3051	\$174.5628	\$178.8204

= 5% Base Steps

RANGE	Step 1	Step 2	Step 3	Step 4	Step 5	Step 6	Step 7	Step 8	Step 9
1	\$1,829.45	\$1,875.18	\$1,920.92	\$1,968.94	\$2,016.96	\$2,067.39	\$2,117.81	\$2,170.76	\$2,223.70
2	\$1,920.92	\$1,968.94	\$2,016.96	\$2,067.39	\$2,117.81	\$2,170.76	\$2,223.70	\$2,279.30	\$2,334.89
3	\$2,016.96	\$2,067.39	\$2,117.81	\$2,170.76	\$2,223.70	\$2,279.30	\$2,334.89	\$2,393.26	\$2,451.63
4	\$2,117.81	\$2,170.76	\$2,223.70	\$2,279.30	\$2,334.89	\$2,393.26	\$2,451.63	\$2,512.92	\$2,574.22
5	\$2,223.70	\$2,279.30	\$2,334.89	\$2,393.26	\$2,451.63	\$2,512.92	\$2,574.22	\$2,638.57	\$2,702.93
6	\$2,334.89	\$2,393.26	\$2,451.63	\$2,512.92	\$2,574.22	\$2,638.57	\$2,702.93	\$2,770.50	\$2,838.07
7	\$2,451.63	\$2,512.92	\$2,574.22	\$2,638.57	\$2,702.93	\$2,770.50	\$2,838.07	\$2,909.02	\$2,979.98
8	\$2,574.22	\$2,638.57	\$2,702.93	\$2,770.50	\$2,838.07	\$2,909.02	\$2,979.98	\$3,054.48	\$3,128.97
9	\$2,702.93	\$2,770.50	\$2,838.07	\$2,909.02	\$2,979.98	\$3,054.48	\$3,128.97	\$3,207.20	\$3,285.42
10	\$2,838.07	\$2,909.02	\$2,979.98	\$3,054.48	\$3,128.97	\$3,207.20	\$3,285.42	\$3,367.56	\$3,449.69
11	\$2,979.98	\$3,054.48	\$3,128.97	\$3,207.20	\$3,285.42	\$3,367.56	\$3,449.69	\$3,535.94	\$3,622.18
12	\$3,128.97	\$3,207.20	\$3,285.42	\$3,367.56	\$3,449.69	\$3,535.94	\$3,622.18	\$3,712.73	\$3,803.29
13	\$3,285.42	\$3,367.56	\$3,449.69	\$3,535.94	\$3,622.18	\$3,712.73	\$3,803.29	\$3,898.37	\$3,993.45
14	\$3,449.69	\$3,535.94	\$3,622.18	\$3,712.73	\$3,803.29	\$3,898.37	\$3,993.45	\$4,093.29	\$4,193.13
15	\$3,622.18	\$3,712.73	\$3,803.29	\$3,898.37	\$3,993.45	\$4,093.29	\$4,193.13	\$4,297.95	\$4,402.78
16	\$3,803.29	\$3,898.37	\$3,993.45	\$4,093.29	\$4,193.13	\$4,297.95	\$4,402.78	\$4,512.85	\$4,622.92
17	\$3,993.45	\$4,093.29	\$4,193.13	\$4,297.95	\$4,402.78	\$4,512.85	\$4,622.92	\$4,738.49	\$4,854.07
18	\$4,193.13	\$4,297.95	\$4,402.78	\$4,512.85	\$4,622.92	\$4,738.49	\$4,854.07	\$4,975.42	\$5,096.77
19	\$4,402.78	\$4,512.85	\$4,622.92	\$4,738.49	\$4,854.07	\$4,975.42	\$5,096.77	\$5,224.19	\$5,351.61
20	\$4,622.92	\$4,738.49	\$4,854.07	\$4,975.42	\$5,096.77	\$5,224.19	\$5,351.61	\$5,485.40	\$5,619.19
21	\$4,854.07	\$4,975.42	\$5,096.77	\$5,224.19	\$5,351.61	\$5,485.40	\$5,619.19	\$5,759.67	\$5,900.15
22	\$5,096.77	\$5,224.19	\$5,351.61	\$5,485.40	\$5,619.19	\$5,759.67	\$5,900.15	\$6,047.65	\$6,195.16
23	\$5,351.61	\$5,485.40	\$5,619.19	\$5,759.67	\$5,900.15	\$6,047.65	\$6,195.16	\$6,350.03	\$6,504.91
24	\$5,619.19	\$5,759.67	\$5,900.15	\$6,047.65	\$6,195.16	\$6,350.03	\$6,504.91	\$6,667.54	\$6,830.16
25	\$5,900.15	\$6,047.65	\$6,195.16	\$6,350.03	\$6,504.91	\$6,667.54	\$6,830.16	\$7,000.91	\$7,171.67
26	\$6,195.16	\$6,350.03	\$6,504.91	\$6,667.54	\$6,830.16	\$7,000.91	\$7,171.67	\$7,350.96	\$7,530.25
27	\$6,504.91	\$6,667.54	\$6,830.16	\$7,000.91	\$7,171.67	\$7,350.96	\$7,530.25	\$7,718.51	\$7,906.76
28	\$6,830.16	\$7,000.91	\$7,171.67	\$7,350.96	\$7,530.25	\$7,718.51	\$7,906.76	\$8,104.43	\$8,302.10
29	\$7,171.67	\$7,350.96	\$7,530.25	\$7,718.51	\$7,906.76	\$8,104.43	\$8,302.10	\$8,509.65	\$8,717.21
30	\$7,530.25	\$7,718.51	\$7,906.76	\$8,104.43	\$8,302.10	\$8,509.65	\$8,717.21	\$8,935.14	\$9,153.07
31	\$7,906.76	\$8,104.43	\$8,302.10	\$8,509.65	\$8,717.21	\$8,935.14	\$9,153.07	\$9,381.89	\$9,610.72
32	\$8,302.10	\$8,509.65	\$8,717.21	\$8,935.14	\$9,153.07	\$9,381.89	\$9,610.72	\$9,850.99	\$10,091.26
33	\$8,717.21	\$8,935.14	\$9,153.07	\$9,381.89	\$9,610.72	\$9,850.99	\$10,091.26	\$10,343.54	\$10,595.82
34	\$9,153.07	\$9,381.89	\$9,610.72	\$9,850.99	\$10,091.26	\$10,343.54	\$10,595.82	\$10,860.71	\$11,125.61
35	\$9,610.72	\$9,850.99	\$10,091.26	\$10,343.54	\$10,595.82	\$10,860.71	\$11,125.61	\$11,403.75	\$11,681.89
36	\$10,091.26	\$10,343.54	\$10,595.82	\$10,860.71	\$11,125.61	\$11,403.75	\$11,681.89	\$11,973.94	\$12,265.98
37	\$10,595.82	\$10,860.71	\$11,125.61	\$11,403.75	\$11,681.89	\$11,973.94	\$12,265.98	\$12,572.63	\$12,879.28
38	\$11,125.61	\$11,403.75	\$11,681.89	\$11,973.94	\$12,265.98	\$12,572.63	\$12,879.28	\$13,201.27	\$13,523.25
39	\$11,681.89	\$11,973.94	\$12,265.98	\$12,572.63	\$12,879.28	\$13,201.27	\$13,523.25	\$13,861.33	\$14,199.41
40	\$12,265.98	\$12,572.63	\$12,879.28	\$13,201.27	\$13,523.25	\$13,861.33	\$14,199.41	\$14,554.40	\$14,909.38
41	\$12,879.28	\$13,201.27	\$13,523.25	\$13,861.33	\$14,199.41	\$14,554.40	\$14,909.38	\$15,282.12	\$15,654.85
42	\$13,523.25	\$13,861.33	\$14,199.41	\$14,554.40	\$14,909.38	\$15,282.12	\$15,654.85	\$16,046.22	\$16,437.59
43	\$14,199.41	\$14,554.40	\$14,909.38	\$15,282.12	\$15,654.85	\$16,046.22	\$16,437.59	\$16,848.53	\$17,259.47
44	\$14,909.38	\$15,282.12	\$15,654.85	\$16,046.22	\$16,437.59	\$16,848.53	\$17,259.47	\$17,690.96	\$18,122.45
45	\$15,654.85	\$16,046.22	\$16,437.59	\$16,848.53	\$17,259.47	\$17,690.96	\$18,122.45	\$18,575.51	\$19,028.57
46	\$16,437.59	\$16,848.53	\$17,259.47	\$17,690.96	\$18,122.45	\$18,575.51	\$19,028.57	\$19,504.28	\$19,980.00
47	\$17,259.47	\$17,690.96	\$18,122.45	\$18,575.51	\$19,028.57	\$19,504.28	\$19,980.00	\$20,479.50	\$20,979.00
48	\$18,122.45	\$18,575.51	\$19,028.57	\$19,504.28	\$19,980.00	\$20,479.50	\$20,979.00	\$21,503.47	\$22,027.95
49	\$19,028.57	\$19,504.28	\$19,980.00	\$20,479.50	\$20,979.00	\$21,503.47	\$22,027.95	\$22,578.64	\$23,129.34
50	\$19,980.00	\$20,479.50	\$20,979.00	\$21,503.47	\$22,027.95	\$22,578.64	\$23,129.34	\$23,707.58	\$24,285.81
51	\$20,979.00	\$21,503.47	\$22,027.95	\$22,578.64	\$23,129.34	\$23,707.58	\$24,285.81	\$24,892.96	\$25,500.10
52	\$22,027.95	\$22,578.64	\$23,129.34	\$23,707.58	\$24,285.81	\$24,892.96	\$25,500.10	\$26,137.60	\$26,775.11
53	\$23,129.34	\$23,707.58	\$24,285.81	\$24,892.96	\$25,500.10	\$26,137.60	\$26,775.11	\$27,444.48	\$28,113.86
54	\$24,285.81	\$24,892.96	\$25,500.10	\$26,137.60	\$26,775.11	\$27,444.48	\$28,113.86	\$28,816.71	\$29,519.55
55	\$25,500.10	\$26,137.60	\$26,775.11	\$27,444.48	\$28,113.86	\$28,816.71	\$29,519.55	\$30,257.54	\$30,995.53

= 5% Base Steps



A STATE OF CALIFORNIA PUBLIC AGENCY

QUAIL VALLEY WATER DISTRICT

BOARD OF DIRECTORS

- Mike Biglay
- Jean Grodewald
- Rita Leonard-Phillips
- Enrique Lopez
- Joan Tyer

RESOLUTION NO. 01-2022

A RESOLUTION OF THE BOARD OF DIRECTORS OF QUAIL VALLEY WATER DISTRICT HONORING SERVICE WORKER II DAN CASTEEL UPON HIS RETIREMENT FOR HIS YEARS OF DEDICATED SERVICE TO THE DISTRICT.

WHEREAS, Dan Casteel began his employment with Quail Valley Water District on January 28, 2016 as a Service Worker II; and

WHEREAS, Mr. Casteel has continued his dedicated service to the District performing daily activities maintaining District facilities and has been instrumental in assisting with the construction of numerous District projects; and

WHEREAS, Mr. Casteel has decided to retire from regular employment with the District while agreeing to remain as a casual employee for future projects;

NOW, THEREFORE, BE IT RESOLVED, The Board of Directors of Quail Valley Water District staff wish to express their sincere gratitude to Mr. Casteel for his dedication and years of service.

Passed and adopted by the Board of Directors of Quail Valley Water District on January 29th, 2022, by the following vote:

AYES: Directors

4

NOES: Directors

0

ABSENT: Directors

1



A STATE OF
CALIFORNIA
PUBLIC AGENCY

QUAIL VALLEY WATER DISTRICT

BOARD OF DIRECTORS

Mike Biglay
Jean Grodewald
Rita Leonard-Phillips
Enrique Lopez
Joan Tyer

Mike Biglay, President

ATTEST:

Dawnette Boatman, Secretary, Quail Valley Water District

Dawnette Boatman, Secretary

Certificate of Appreciation

We Hereby Express Our Sincere Appreciation and Congratulate

Dan Casteel

On his Retirement and for Outstanding Service and Contributions
During His Years of Service to Quail Valley Water District

And Award This Certificate From

Quail Valley Water District

This 29th Day of January, 2022

Mike Biglay

Mike Biglay, President

Report of General Manager

October 23, 2021 through January 25, 2022

- Monitor and operate Montclair well and chlorination equipment.
- Monitor chlorine residuals in water system.
- Refill and bleed air from WTP solar heating system.
- Assist staff removing back porch roof, removing and disposing of debris, and repairing roof leak.
- Repair leak on Olympics from failed PVC glue joint.
- Prepare for and attend October board meeting.
- Read water meters for October.
- Monitor filter backwash performance to diagnose plugging issue.
- Insulate piping at Hackamore well and reservoir.
- Observe installation of pumping equipment in new well. Terminate electrical connections, connect airline, and test operation of pump.
- Disinfect new well.
- Collect water quality samples for November, deliver to Bakersfield. Deliver bank deposit to Bakersfield bank branch.
- Email October financial reports and Prop 84 progress report to CoBank.
- Monitor excessive water use on East Side, appears to be 5-10 gpm, no apparent leaks found.
- Remove screens from diffusers in both filters to test backwash function without diffuser screens.
- Install HOA switches in east and west well panels to allow manual operation of wells for testing.
- Update website to indicate cancelled board meetings through holidays.
- Assist staff reading meters for November and determining issue with old tablet locking up while meter read sheet is open.
- Replace failed front tire on backhoe.
- Fuel equipment, travel to Tehachapi, fill fuel trailer.
- Perform monthly PRV inspections for December.
- Meet with WaterBoards staff for Prop 84 project inspection.
- Collect December water quality samples, deliver to Bakersfield. Deliver bank deposit to Bakersfield bank branch.
- Complete and print December newsletter. Complete December billing, email and mail statements.
- Travel to Irvine to purchase used truck for District use. Load and transport truck back to Yard.
- Repair water leak at Dearborn PRV.
- Diagnose issue with Country Canyon PRV causing excessive downstream pressure.
- Fill-in for office staff on medical leave.
- Remove flat tire from Ford service truck, deliver to Tire Store for repair, re-install on truck.
- Bacteriological testing of new well indicate bacteria present, disinfect well.

- Assist staff removing pick up bed from new truck and removing service body for installation on truck.
- Enter and pay bills, reconcile accounts.
- Complete and submit Prop 84 claim 43.
- Filter vendor provided updated program for filter PLC to resolve backwash issue. Download updated software, travel to site and install.
- Clean leaking Air/Vac on Quail Ridge Road.
- Received notification from WaterBoards that lab used for bacteriological sample analysis has had certification suspended. Determine alternatives, order sample supplies from Fresno lab.
- Travel to Lancaster to fill welding tanks, pick up steel supplies, chlorine, deliver bank deposit to Palmdale branch.
- Assist staff fabricating valve keys and other water service tools for new truck during inclement weather.
- Purchase new tablet computer for meter reading. Load needed software.
- Found East Tank water level site gauge cable broken during inspection.
- Post A/P, A/R.
- Discovered East Tank valve still open at 6:00 AM while checking system operation in SCADA. Utilize SCADA to manually close East Tank fill valve. Review data in SCADA to determine East Tank site battery voltage is very low (several days of cloudy weather preventing solar panels recharging batteries) causing erroneous water level reading. Deliver message board to site to use batteries from message board to charge tank batteries.
- Travel to Bakersfield to deliver bank deposit. Noticed East Tank battery voltage again dropping. Pick up portable generator to use for charging batteries.
- Found message board batteries only operated charger for about 1-1/2 hours before voltage dropped to low to operate inverter, message board batteries likely sulfated. Install portable generator to charge batteries. Leave generator running overnight to charge.
- Prepare new tablet for meter reads. Assist Staff with December meter reads.
- Meter reads indicated 2 customers with excessive use, running water, indicating possible leaks. Attempt to contact first customer, no answer at door, turn off water. Notified second customer and pointed out apparent water leak in customer's yard, assist with turning off water for customer to perform repairs.
- Notify Kern County Environmental Health of new well completion, email pictures.
- Assist staff removing valve turning machine from Jeep and installing on new service body, modifying body to fit machine in tool cabinet.
- Assist staff with modifications to new service body to fit new truck chassis. Assist mounting air compressor on service body.
- Collect January water quality samples, deliver to Bakersfield, pick up parts.
- Review and correct entries to fixed assets for closing books.

Issues and Concerns:

- Work with WaterBoards to permit new well.
- Cora Constructors, Paso Robles Tanks are working with vendor to perform water tank inspections using diver to negate need to empty tanks. Dive company has

provided procedure in compliance with AWWA and OSHA regulations for inspection and will be scheduling inspection.

- Need to develop operations manual for complete system operation and administration to ensure continuity in event of personnel changes.
- **Need to develop additional water source(s).**
- Draft agreement for Pretoria well use.
- Continue training staff. Assist staff with completing water course and scheduling D2, T2 testing.
- Draft drought restrictions policy.
- Complete rate study.

Completed:

- Removal of filter diffuser screens has resolved filter backwash issues.
- West well complete, pump equipment installed, well disinfected and Title 22 sampling started.

Upcoming:

- Install blow-off on Lalaponzi.
- Replace blow-off at 13029 Umtali.
- Complete site grading.
- Relocate existing Montclair tank to West Tank site and install tank.
- Install blow-off at east and west ends of Umtali to facilitate flushing Umtali line.
- Oversee well construction and re-hab. **(In Process)**
- Cleanup along Umtali (complete services, install valve boxes, backfill, etc.).
- Re-roof office building.
- Finish Building remodel.
- Replace door on garage.
- Install cross and valves at Umtali and Roper for service on Roper and Inyanga.
- Finish Insulating Country Canyon booster building **(Near Completion)**
- Repair storm damage at Pretoria and Hackamore wells.
- Install back-up generator at Office.
- Install arsenic treatment at Hackamore well.
- Install building to house well, filter system at Hackamore well.
- Replace Pretoria 2" main with 4" main.

Prop 84 Update

December 22, 2021

Well Phase:

Abundant Water Wells completed pump installation in new well. District has collected initial Title 22 water quality samples and results indicate that only iron and manganese are present at levels exceeding state standards matching known water quality of existing well.

District staff will be working with WaterBoards on permitting of new well. Once new well is approved for service, District will work with Abundant Water Wells on scheduling cleaning and equipment replacement in existing well.

Reservoir Phase:

District is working with Cora to schedule reservoir warranty inspections during low-demand season.

Treatment Plant:

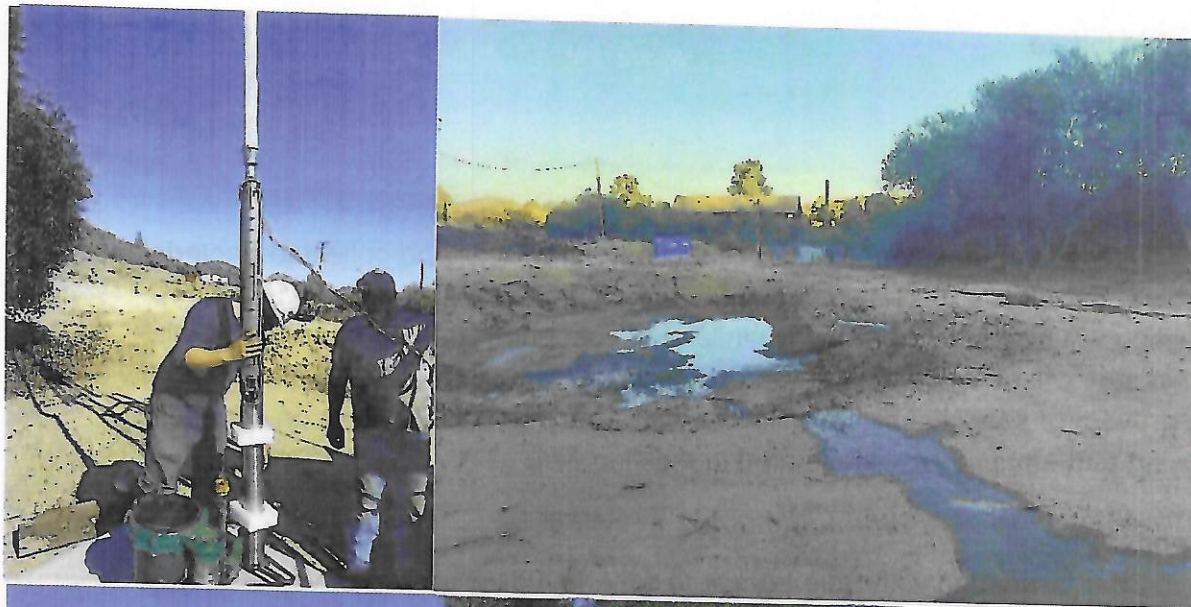
District, REVE and E&EC are awaiting WaterBoards approval of final change order for Treatment Phase. Diffuser outer sleeves have been removed from both filter vessels and backwash cycles are completing normally.

District Construction Activities:

District staff completed electrical and instrumentation connections to new well.

Financial Update:

Claim 43 has been submitted to WaterBoards for review and payment.



Prop 84 Update

January 25, 2022

Well Phase:

District staff has completed disinfection of new well and collected bacteriological samples. Samples collected in January were absent for E-coli and total coliform. Sampling will be repeated monthly while staff continues work on permitting well. District staff will be working with WaterBoards on permitting of new well. Once new well is approved for service, District will work with Abundant Water Wells on scheduling cleaning and equipment replacement in existing well.

Reservoir Phase:

Cora is working with Blue Locker to schedule divers for reservoir warranty inspections keeping reservoirs in service and negating need to drain reservoirs for inspection. Blue Locker has provided District with procedures used meeting AWWA and OSHA requirements.

Treatment Plant:

District, REVE and E&EC have received email from WaterBoards approving final change order for Treatment Phase. Wet signed copies are being prepared for submittal to WaterBoards and E&EC is preparing final pay request for submittal to District. With exception of a minor SCADA programming issue requiring operator intervention to complete rinse cycle post backwash, backwash cycles are completing successfully. District staff will be working with Foreshock to resolve issue.

Financial Update:

Claim 43 has been submitted to WaterBoards for review and payment.

SYSTEM STATUS

January 2022

- Montclair well remains the sole source for entire system.
- For the month of January to date (1/24/22), Montclair well is averaging 4.60 hours per day supplying an average of 8,885 gallons per day. Average pumping for December was 10,087 gallons per day.
- Montclair well continues to function normally with no issues. Pumping and static levels are stabilizing with the reduced demand of winter months. On October 21st, the static water level was 262 feet and pumping water level on September 29th was 273 feet. On January 22nd, static water level was 263 feet.
- No flushing was performed in October, November, or December.
- Monthly bacteriological sampling for October, November, December, and January were completed in compliance with the combined system BSSP. All samples were negative for coliform and e. coli.
- Fe and Mn samples continue to indicate N/D levels post filtration.
- East Tank fill valve stuck open on 12/31 due to low voltage at site resulting in an overflow and an approximate 10,000 gallon water loss.

Hackamore well was pumping at 7.8 gpm on January 3rd.

Oct-21			2021 Yearly Totals		
Water Produced	313,640	100%	Water Produced	3,891,896	100%
Water Sold	302,273	96%	Water Sold	3,463,520	89%
Flushing	0	0%	Flushing	3,494	0%
Misc Use	0	0%	Misc Use	8,000	0%
Lost	11,367	4%	Lost	416,882	11%
Hackamore			Hackamore		
Water Produced	6,287	100%	Water Produced	44,943	100%
Water Sold	3,234	51%	Water Sold	29,009	65%
Flushing	0	0%	Flushing	0	0%
Lost	3,053	49%	Lost	15,934	35%
Tanganda			Tanganda		
Water Produced	588	100%	Water Produced	646,653	100%
Water Sold	0	0%	Water Sold	0	0%
Flushing	0	0%	Flushing	0	0%
Lost	588	100%	Lost	646,653	100%

Nov-21			2021 Yearly Totals		
Water Produced	313,154	100%	Water Produced	4,205,050	100%
Water Sold	260,511	83%	Water Sold	3,724,030	89%
Flushing	0	0%	Flushing	3,494	0%
Misc Use	0	0%	Misc Use	8,000	0%
Lost	52,643	17%	Lost	469,526	11%
Hackamore			Hackamore		
Water Produced	4,388	100%	Water Produced	49,331	100%
Water Sold	3,418	78%	Water Sold	32,427	66%
Flushing	0	0%	Flushing	0	0%
Lost	970	22%	Lost	16,904	34%
Tanganda			Tanganda		
Water Produced	0	100%	Water Produced	646,653	100%
Water Sold	0	#DIV/0!	Water Sold	0	0%
Flushing	0	#DIV/0!	Flushing	0	0%
Lost	0	#DIV/0!	Lost	646,653	100%

Dec-21			2021 Yearly Totals		
Water Produced	312,706	100%	Water Produced	4,517,756	100%
Water Sold	296,330	95%	Water Sold	4,020,361	89%
Flushing	0	0%	Flushing	3,494	0%
Misc Use	10,000	3%	Misc Use	18,000	0%
Lost	6,376	2%	Lost	475,901	11%
Hackamore			Hackamore		
Water Produced	4,001	100%	Water Produced	53,332	100%
Water Sold	2,159	54%	Water Sold	34,586	65%
Flushing	0	0%	Flushing	0	0%
Lost	1,842	46%	Lost	18,746	35%
Tanganda			Tanganda		
Water Produced	0	100%	Water Produced	646,653	100%
Water Sold	0	#DIV/0!	Water Sold	0	0%
Flushing	0	#DIV/0!	Flushing	0	0%
Lost	0	#DIV/0!	Lost	646,653	100%

